






INSTALLATION MANUAL

R204 Series

PRELIMINARY WARNINGS

The word **WARNING** preceded by the symbol  indicates conditions or actions that put the user's safety at risk. The word **ATTENTION** preceded by the symbol  indicates conditions or actions that might damage the instrument or the connected equipment.

The warranty shall become null and void in the event of improper use or tampering with the module or devices supplied by the manufacturer as necessary for its correct operation, and if the instructions contained in this manual are not followed.

| | |
|---|--|
|  | WARNING: The full content of this manual must be read before any operation. The module must only be used by qualified electricians. Specific documentation is available using the QR-CODE shown on page 1. |
|  | The module must be repaired and damaged parts replaced by the Manufacturer. The product is sensitive to electrostatic discharges. Take appropriate measures during any operation. |
|  | Electrical and electronic waste disposal (applicable in the European Union and other countries with recycling). The symbol on the product or its packaging shows the product must be surrendered to a collection centre authorized to recycle electrical and electronic waste. |



SENECA s.r.l.; Via Austria, 26 – 35127 – PADOVA – ITALY; Tel. +39.049.8705359 - Fax +39.049.8706287

CONTACT INFORMATION

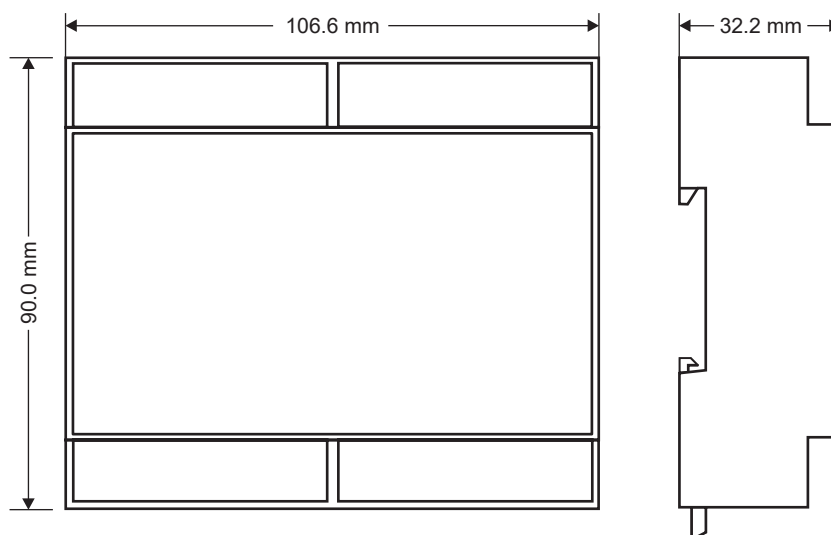
| | | | |
|-------------------|--|---------------------|--|
| Technical support | support@seneca.it | Product information | sales@seneca.it |
|-------------------|--|---------------------|--|

This document is the property of SENECA srl. Copies and reproduction are prohibited unless authorised.

The content of this document corresponds to the described products and technologies.

Stated data may be modified or supplemented for technical and/or sales purposes.

MODULE LAYOUT





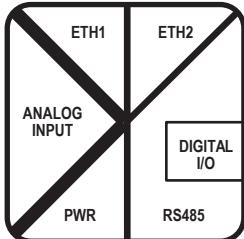


Weight: 170 g; **Enclosure:** UL94-V0 self-extinguishing PC/ABS material, black.

SIGNALS VIA LED ON FRONT PANEL

| LED | STATUS | LED meaning |
|------------------------|----------|---|
| DO1 | On | Output 01 activated |
| | Off | Output 01 deactivated |
| DO2 | On | Output 02 activated |
| | Off | Output 02 deactivated |
| DI1 | On | Input 01 activated |
| | Off | Input 01 deactivated |
| DI2 | On | Input 02 activated |
| | Off | Input 02 deactivated |
| DATA LOGGER | ON | Data Logger function enabled |
| | Flashing | LOG sending error |
| | Off | Data Logger function disabled |
| STS (Only R204) | On | Set IP address (powered module) |
| | Flashing | Waiting for the IP address from the DHCP (powered module) |
| STS (Only R204-L-P) | Off | No IP address set |
| | On | IP address set |
| | Flashing | Active Profinet communication |
| STS (Only R204-L-E) | On | Set IP address (powered module) |
| | Flashing | Ethernet/IP communication active |
| WIRING ERROR | Flashing | Wiring error |
| | Off | Correct wiring |
| RX | On | RS485 connection anomaly |
| | Flashing | Reception of data packet completed on RS485 |
| TX | Flashing | Transmission of data packet completed on RS485 |
| ETH TRF (Yellow) | Flashing | Packet transit on Ethernet port |
| ETH LNK (Green) | Flashing | Ethernet port connected |

TECHNICAL SPECIFICATIONS

| | | | |
|--|--|--|---|
| CERTIFICATIONS MARKING | <div><div></div><div></div><div></div><div></div></div> | | |
| INSULATION | <div></div> | | <div>LEGEND:<div><div></div>50 V</div><div><div></div>1500 Vac</div><div><div></div>3500 Vac*</div></div> <div>*: Tensione nominale di tenuta</div> |
| ENVIRONMENTAL CONDITIONS | Temperature: -25°C ÷ +65°C Humidity: 30% ÷ 90% non condensing. Storage temperature: -30°C ÷ + 85°C Degree of protection: IP20 | | |
| ASSEMBLY | DIN rail 35mm IEC EN60715, wall or panel with screws. | | |
| CONNECTIONS | For terminal block 43 to 55 minimum AWG 18, maximum AWG 14. Use Copper Conductors Only. Recommended torque 0.5÷0.55 Nm / 4.5÷4.9 in.lbs. | | |
| POWER SUPPLY | 10 ÷ 30Vdc, max absorption: 2.0W Device supplied by limited energy according to UL 61010-1 3rd Ed, section 9.4 or LPS in conformance with UL 60950-1/ UL 62368-1 or Class 2 in compliance with UL 1310 or UL 1585. System Voltage of External Power Supply 300V, Overvoltage Category II | | |
| COMMUNICATION PORTS | RS485: Baud rate: 1200 ÷ 115200 baud (for further information see the user manual). Ethernet ports 2 | | |
| VOLTAGE INPUT | 3 phase-4 wires max 3x277/480 V; 3 phase-3 wires max. 3x480V; 1phase-2wires max 240 V. Minimum voltage 5 V (F.S. 150 Vac); 20 V (F.S. 600 Vac). Overvoltage measurement category: CAT III 300 V (L-N) | | |
| CURRENT INPUT | Max current from TA: 5 A Max voltage from Rogowski or TA with mV output: 250 mV | | |
| | Base prec. (*) | Network frequency: 50 ÷ 60 Hz. Voltmeter: 0.2% Ammeter: 0.2%, wattmeter: 0.5% | |
| (*) See the user manual for the error limits. (*) Accuracy is guaranteed in the ranges: CosΦ > 0.5; Vrms: 40 ÷ 600 Vac; Irms: 5 - 100% See the user manual for the error limits. | | | |
| ROGOWSKI ANALOGUE INPUT | Class / base prec. (*) | Network frequency: 50 ÷ 60 Hz. Voltmeter: 0.5 % Ammeter: 0.5%, wattmeter: 1 % | |
| | Rogowski supplied by Seneca | • 100 mV correspond to 1000 A @ 50 Hz (sinusoidal) • 120 mV correspond to 1000 A @ 60 Hz (sinusoidal) Maximum measurable current: 3 kA @ 50 Hz; 2,5 kA @ 60 Hz Precision after calibration: ± 1 % (see chapter “Rogowski sensor”) Linearity: ± 0.2 % | |
| (*) Accuracy is guaranteed in the ranges: CosΦ > 0.9; Vrms: 40 ÷ 600 Vac; Irms: 0.4 - 100% Rogowski current (error due to external Rogowski sensors excluded). See the user manual for the error limits. | | | |
| DIGITAL INPUT | For the technical specifications, see the electrical connection diagrams on page 5 | | |
| DIGITAL OUTPUT | For the technical specifications, see the electrical connection diagrams on page 5 | | |
| COUNTERS | Number of counters: 2 at 32 bit, maximum speed: 50 Hz | | |

CAUTION

This is a Class A product. In a residential environment this equipment may cause radio interference. In this case, the user may have to take adequate countermeasures.

ROGOWSKI SENSOR

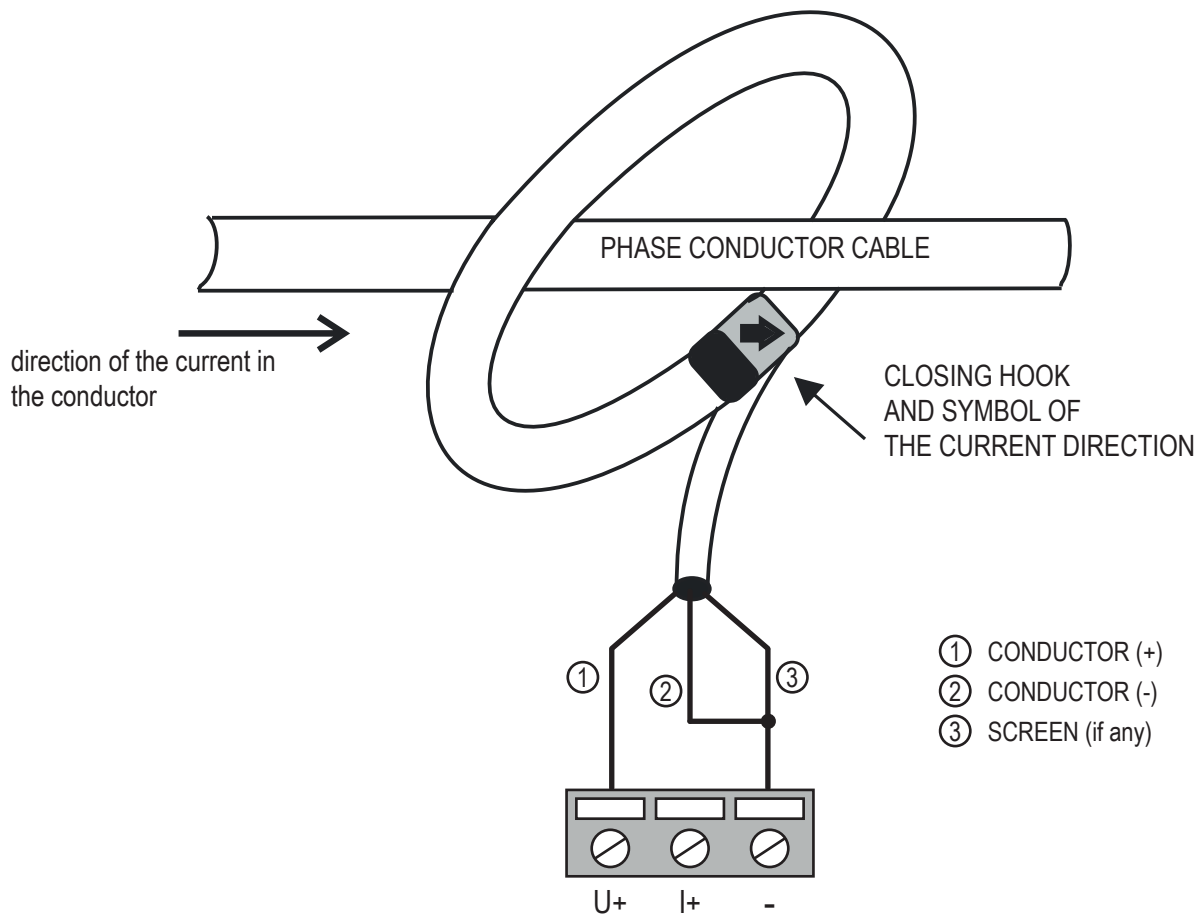
The Rogowski sensor is a ring-shaped device designed for measuring AC, impulsive or complex waveforms.

For its correct use:

- wrap the ring on the conductor so that the arrow symbol on the ring points in the same direction as the current in the conductor
- make sure the connections are made correctly
- for a more precise measurement, the conductor wire must be placed in a central position with respect to the ring
- for a correct measurement, calibrate the Rogowski sensor by writing the calibration coefficient in the corresponding Modbus register (see the user manual).

Example: if the sensor is supplied with a characteristic of 90 mV / 1000 A, on the calibration register corresponding to the phase in which the Rogowski sensor is applied, the value to be set is: $1000 / (90 \cdot 10) = 1.11$

NOTE ON ACCURACY: The product has a nominal accuracy of 0.5%. The total accuracy is the sum between the accuracy of the device and the accuracy of the Rogowski sensor connected to it.



DIP - SWITCH SETTINGS

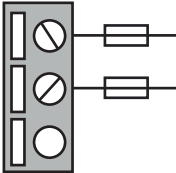
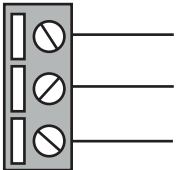
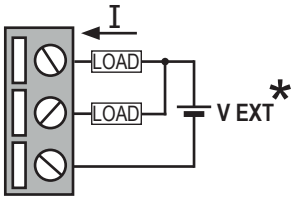
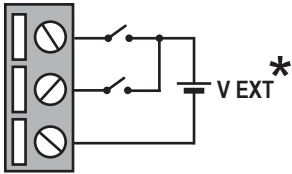
WARNING

The DIP-switch settings are read only at boot time. At each change, perform a restart.

For use and settings via DIP-SWITCH, see the user manual available on the website on the web page dedicated to the product.

ELECTRICAL CONNECTIONS

 **Field Installable Accessory**

| | |
|---|--|
| <p>POWER SUPPLY</p> <p> + 10 - 11 NOT CONNECTED </p>  | <p>The power supply must be connected to terminals 10 and 11. The supply voltage must be: 10 to 30Vdc, It is advisable to insert a 1 A delayed fuse</p> |
| <p>RS485</p> <p> B 23 A 24 GND 25 </p>  | |
| <p>DIGITAL OUTPUT</p> <p> DO1 13 DO2 14 C1 15 </p>  | <p>The device has two digital outputs. Range: $I_{max} = 50 \text{ mA}$ $V_{max} = 28\text{V}$. See user manual for functionality. *: Reversible polarity.</p> |
| <p>DIGITAL INPUT</p> <p> DI1 16 DI2 17 C2 18 </p>  | <p>The device is equipped with two digital inputs that can be activated with voltage from 12 to 24 V. See user manual for functionality. *: Reversible polarity.</p> |

ELECTRICAL CONNECTIONS



CAUTION

The installation of this appliance must only be carried out by qualified personnel.

Check that the device plate data (measurement voltage, auxiliary power supply voltage, measurement current, frequency) match the actual data of the network to which the instrument is connected. In the wiring, strictly observe the insertion diagram; inaccuracy in the connections inevitably causes false measurements or damage to the instrument.

Once the instrument is connected, complete the installation with the device configuration.

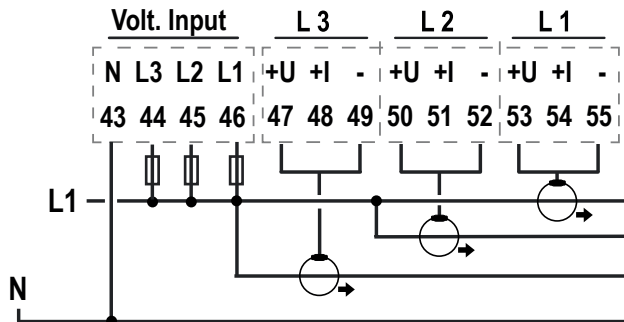
The earth connection of the secondary of CTs with current, voltage or rogowski output is possible on the negative terminal. In the case of rogowski sensors, the screen must always be connected to the negative terminal.

Current measurement is only possible using current transformers.

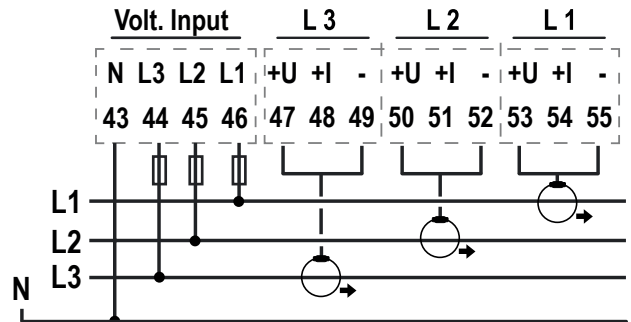
It is advisable to insert a slow-blow 1 A fuse as indicated in the diagrams below.

CONNECTIONS FOR ROGOWSKI SENSORS

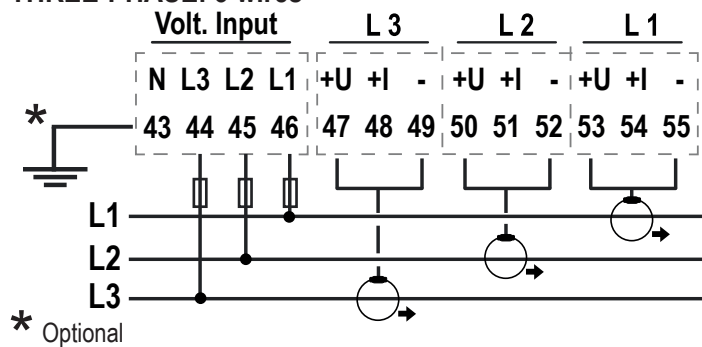
SINGLE-PHASE (with load sharing)



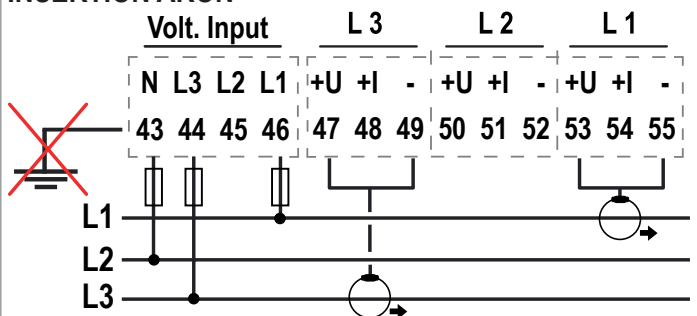
THREE-PHASE: 4 wires



THREE-PHASE: 3 wires



INSERTION ARON



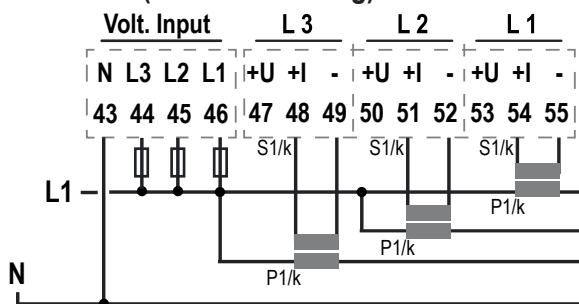
WARNING! Grounding via terminal 43 is prohibited.

ATTENTION! The inputs for Rogowski sensors are non-inverting.

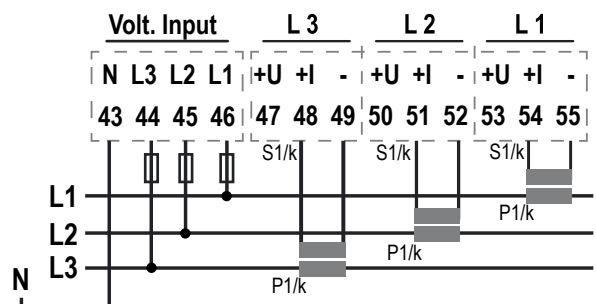
For electrical connections, refer to the Rogowski sensor manual.

CONNECTIONS FOR CURRENT OUTPUT TA

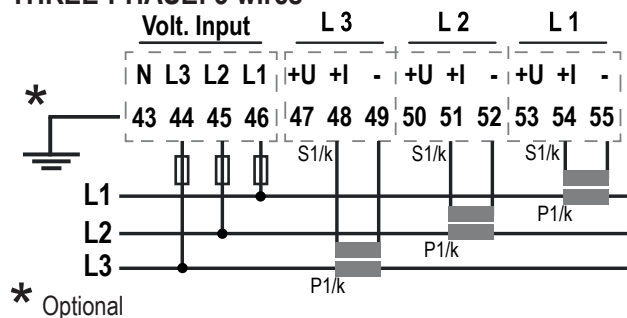
SINGLE-PHASE (with load sharing)



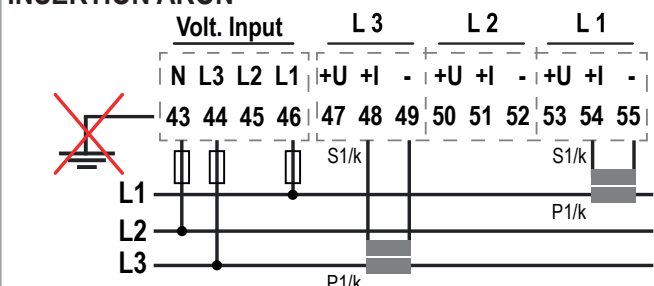
THREE-PHASE: 4 wires



THREE-PHASE: 3 wires



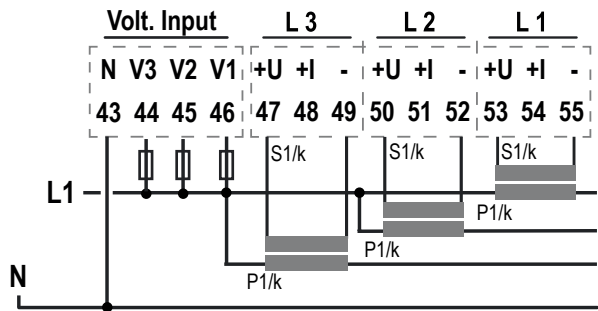
INSERTION ARON



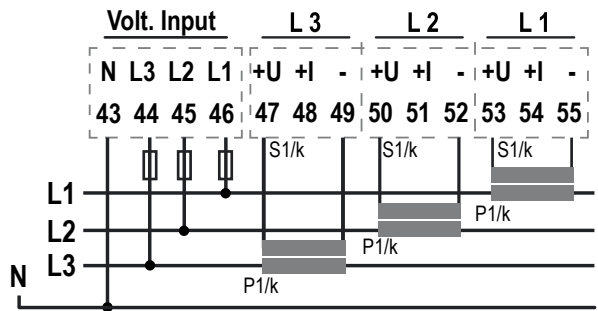
WARNING! Grounding via terminal 43 is prohibited.

CONNECTIONS FOR VOLTAGE OUTPUT TA (mV)

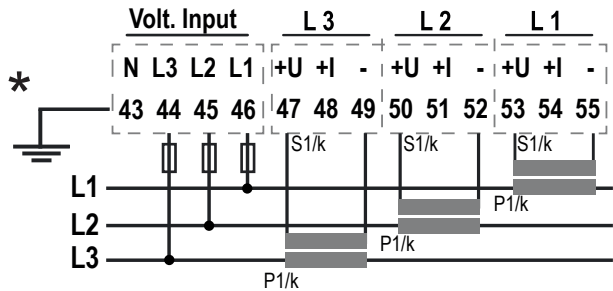
SINGLE-PHASE (with load sharing)



THREE-PHASE: 4 wires

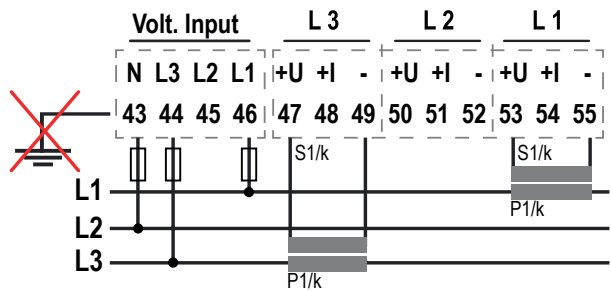


THREE-PHASE: 3 wires



* Optional

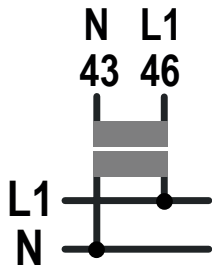
INSERTION ARON



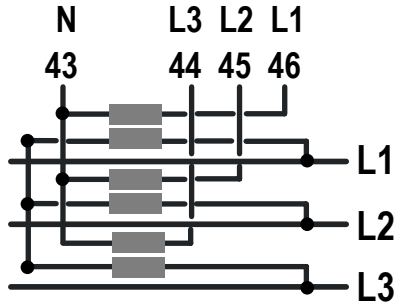
WARNING! Grounding via terminal 43 is prohibited.

TV CONNECTIONS

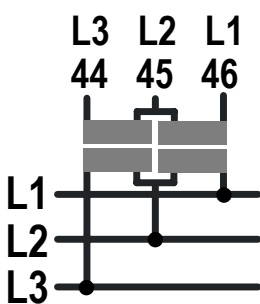
SINGLE-PHASE



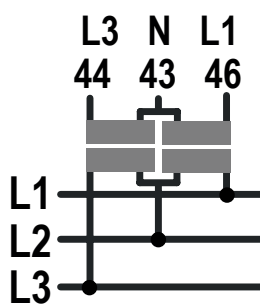
THREE-PHASE: 4 wires



THREE-PHASE: 3 wires



INSERTION ARON



FACTORY IP ADDRESS

The default module IP address is static: 192. 168. 90. 101

In the R-204-2-L-P version, the module is supplied without an IP address (0.0.0.0).

WEB SERVER

To access the Web Server with the factory IP address above, use the following credentials:

Username: admin; **Password:** admin

⚠ CAUTION

DO NOT USE DEVICES WITH THE SAME IP ADDRESS IN THE SAME ETHERNET NETWORK.

ETHERNET CONNECTION RULES

For the Ethernet cabling between the devices, the use of the shielded CAT5 or CAT5e cable is required.

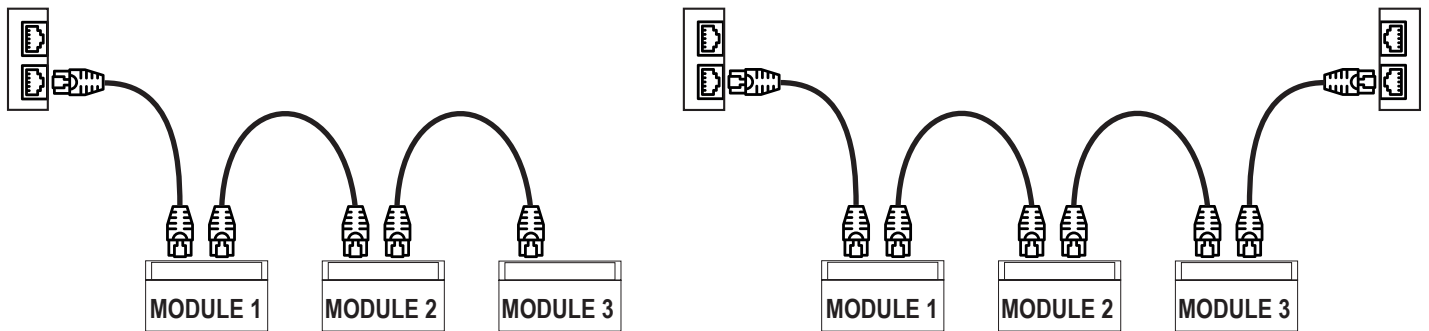
DAISY-CHAIN ETHERNET CONNECTION

⚠ CAUTION

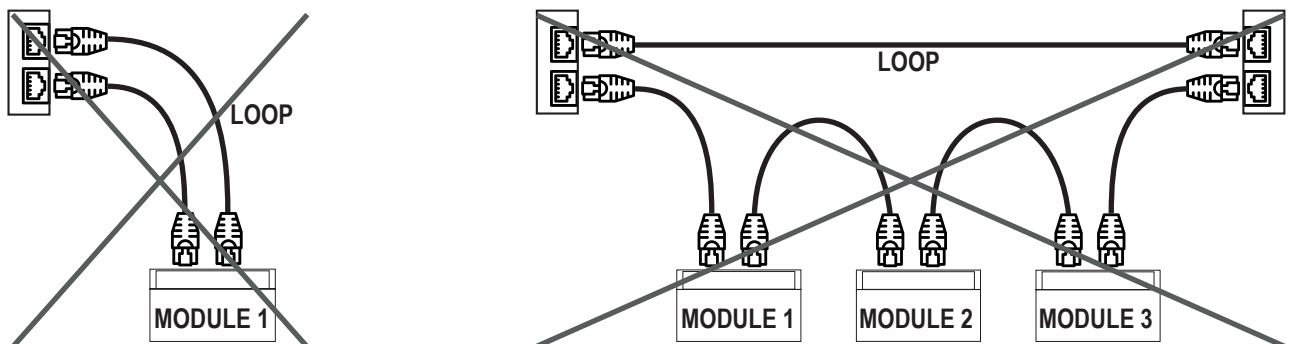
IT IS NOT ALLOWED TO CREATE LOOPS WITH ETHERNET CABLES

Using the daisy-chain connection it is not necessary to use switches to connect the devices.

The following examples show the correct connections.



There must be no loops in the Ethernet cabling, otherwise the communication will not work. The modules and switches must be connected eliminating any loops. The following examples show the incorrect connections.



The LAN fault-bypass function allows you to keep the connection between the two Ethernet ports of the device ON, in the event of a power failure. If a device turns off, the chain is not interrupted and the devices downstream of the switched-off one will still be accessible. This function has a limited duration: the connection remains active for a few days, typically 4. The fault-bypass function requires that the sum of the lengths of the two cables connected to the switched off module is less than 100m.