

USER MANUAL

**SERIES R-P I/O
WITH PROFINET IO
PROTOCOL**



SENECA S.r.l.

Via Austria 26 – 35127 – Z.I. - PADOVA (PD) - ITALY

Tel. +39.049.8705355 – 8705355 Fax +39 049.8706287

www.seneca.it



ORIGINAL INSTRUCTIONS

Introduction

The content of this documentation refers to products and technologies described in it.

All technical data contained in the document may be changed without notice.

The content of this documentation is subject to periodic review.

To use the product safely and effectively, read the following instructions carefully before use.

The product must be used only for the use for which it was designed and manufactured: any other use is under the full responsibility of the user.

Installation, programming and set-up are allowed only to authorized, physically and intellectually suitable operators.

Set-up must be performed only after correct installation and the user must follow all the operations described in the installation manual carefully.

Seneca is not responsible for failures, breakages and accidents caused by ignorance or failure to apply the stated requirements.

Seneca is not responsible for any unauthorized modifications.

Seneca reserves the right to modify the device, for any commercial or construction requirement, without the obligation to promptly update the reference manuals.

No liability for the contents of this document can be accepted.

Use the concepts, examples and other content at your own risk.

There may be errors and inaccuracies in this document that could damage your system, so proceed with caution, the author(s) will not take responsibility for it.

Technical specifications are subject to change without notice.

CONTACT US

Technical Support	supporto@seneca.it
Product Information	commerciale@seneca.it

This document is the property of SENECA srl.
Copies and reproduction are prohibited unless authorised.

Document revisions

DATE	REVISION	NOTES	AUTHOR
20/02/2023	0	First revision Supported devices: R-32DIDO-1-P, R-16DI-8DO-P, R-8AI-8DIDO-P	MM
02/03/2023	1	Chapter 'Protection of digital outputs' added	MM
16/03/2023	2	Added chapter on FW Update Moved chapter on configuring gsdml file parameters Added info on the procedure to reset the configuration to factory default Added I/O reaction time on R-32DIDO-P Added warning for complete hardware compilation on Tia portal	MM

INDICE

1. INTRODUCTION.....	6
2. R-P SERIES DEVICES	6
2.1. INFORMATION ABOUT THE PROFINET IO PROTOCOL	6
2.2. R-32DIDO-P	6
2.2.1. PROTECTION OF DIGITAL OUTPUTS	7
2.2.2. I/O REACTION TIME	7
2.3. R-16DI-8DO-P	7
2.4. R-8AI-8DIDO-P	7
2.4.1. ANALOGUE INPUT UPDATE TIME	8
2.4.2. DIGITAL INPUT UPDATE TIME	8
3. RESETTING THE DEVICE TO FACTORY CONFIGURATION.....	9
4. CONNECTION OF THE DEVICE TO AN ETHERNET NETWORK	9
5. WEB SERVER	9
5.1. ACCESS TO THE WEB SERVER	10
6. EXAMPLE OF CREATING A PROJECT WITH SIEMENS PLC (TIA PORTAL 16)...	11
6.1. INSTALLING THE GSDML FILE.....	11
6.2. INSERTION OF THE SIEMENS PLC IN THE PROJECT	12
6.3. INSERTION OF THE PROFINET SENECA IO	15
6.4. CONFIGURATION OF THE PARAMETERS OF THE SENECA DEVICE	18
6.5. CONFIGURATION PARAMETERS OF THE GSDML FILE	19
6.5.1. R-32DIDO-P	19
6.5.2. R-16DI-8DO-P	19
6.5.3. R-8AI-8DIDO-P	20
6.6. R-32DIDO-P I/O DATA	23
6.7. R-16DI-8DO-P I/O DATA	26
6.8. R-8AI-8DIDO-P I/O DATA	31
6.9. COMPILATION AND SENDING OF THE PROJECT TO THE SIEMENS PLC	32
7. EXAMPLE OF CREATING A PROJECT WITH PLC CODESYS 3.5	35
7.1.1. INSERTION OF THE CODESYS PLC IN THE PROJECT	35
7.1.2. INSTALLING THE GSD	39
7.1.3. INSTALLATION OF THE SENECA PROFINET IO	41
7.1.4. CONFIGURATION OF THE PARAMETERS OF THE SENECA IO	42
7.1.5. READING AND WRITING THE SENECA IO FROM CODESYS	44
8. CABLE HARNESS FOR MODELS WITH DOUBLE ETHERNET PORT	46
8.1. CHAIN ETHERNET CONNECTION (DAISY CHAIN).....	46
8.2. LAN FAULT-BYPASS FUNCTION	48

9. SEARCH AND MODIFICATION OF THE DEVICE IP WITH SENECA DISCOVERY TOOL.....	49
10. FIRMWARE UPDATE.....	50

1. INTRODUCTION



ATTENTION!

This user manual extends the information from the installation manual to the configuration of the device. Use the installation manual for more information.



ATTENTION!

In any case, SENECA s.r.l. or its suppliers will not be responsible for the loss of data/revenue or consequential or incidental damages due to negligence or bad/improper management of the device, even if SENECA is well aware of these possible damages.

SENECA, its subsidiaries, affiliates, group companies, suppliers and distributors do not guarantee that the functions fully meet the customer's expectations or that the device, firmware and software should have no errors or operate continuously.

2. R-P SERIES DEVICES

The R series I/O devices support the Profinet IO protocol

2.1. INFORMATION ABOUT THE PROFINET IO PROTOCOL

Type of protocol: Class A Device, Cyclic Real-time (RT) and Acyclic Data

The device has been tested using the following PLCs:
SIEMENS S7 1200 firmware revision 4.2.3 (Tia Portal 16)
CODESYS Runtime 3.5 (Codesys 3.5)

2.2. R-32DIDO-P

The devices allow the use of 32 digital channels that can be individually configured for input or output.

CODE	ETHERNET PORTS
R-32DIDO-1-P	1 PORT 10/100 Mbit

2.2.1. PROTECTION OF DIGITAL OUTPUTS

The outputs are protected against overload and against overtemperature, they open cyclically until the fault is repaired or the output opens.

The limit current is between 0.6 and 1.2 A.

2.2.2. I/O REACTION TIME

With an update time of the Profinet IO cycle set at 2ms (default) we obtain that:

The switching of a digital input is updated in the communication in maximum 4ms.

The command of a digital output via Profinet communication switches the output in maximum 4ms.

2.3. R-16DI-8DO-P

The devices allow the use of 16 digital input channels and 8 digital output channels (relay).

CODE	ETHERNET PORTS
R-16DI8DO-P	2 PORTS 10/100 Mbit (Switch mode)

2.4. R-8AI-8DIDO-P

The devices allow the use of 8 analogue input channels and 8 digital channels individually configurable as input or output.

CODCE	ETHERNET PORTS
R-8AI-8DIDO-P	2 PORTS 10/100 Mbit (Switch mode)

2.4.1. ANALOGUE INPUT UPDATE TIME

The sampling time of the analogue inputs depends on the ADC sampling time.
If an analogue input is disabled, its acquisition time must not be counted.

The refresh time of an analogue channel is:

$$T_{refresh}[ms] = (N_{act} + 1) * (2 * T_{ADC}[ms] + 10ms)$$

Where:

N_{act} rappresenta il numero di canali analogici attivi

$T_{ADC}[ms]$ rappresenta il tempo di campionamento dell'ADC in ms

If, for example, the sampling time of the ADC is set at 50ms and all 8 input analogue channels are active, we have:

$$T_{refresh} = 9 * (2 * 50 + 10ms) = 9 * 110ms = 990 \text{ ms}$$

2.4.2. DIGITAL INPUT UPDATE TIME

The sampling time of the digital inputs takes place between the sampling of one channel and the other so the I/O update takes place every:

$$T_{refresh \text{ digital}}[ms] = (2 * T_{ADC}[ms] + 10ms)$$

If, for example, the sampling time of the ADC is set to 50ms, the refresh of the digital I/Os is:

$$T_{refresh} = (2 * 50 + 10ms) = 110ms$$

3. **RESETTING THE DEVICE TO FACTORY CONFIGURATION**

It is possible to reset the device to the factory configuration (factory IP address 192.168.90.101 included) using the following procedure:

- 1) Remove power from the device
- 2) Depending on the model, if the dip switch is not directly accessible, remove the rear cover of the device
- 3) With the device off, set dip switch 1 and 2 to ON
- 4) Close the lid
- 5) Power up the device
- 6) The device has now been reset to the factory configuration
- 7) Turn dip switch 1 and 2 back to OFF.

4. **CONNECTION OF THE DEVICE TO AN ETHERNET NETWORK**

The factory configuration of the IP address is:

Static address: 192.168.90.101

Therefore, multiple devices must not be inserted on the same network with the same static IP.

If you want to connect multiple devices on the same network, you need to change the IP address configuration (for instance using the Seneca Discovery Device software).



**DO NOT CONNECT 2 OR MORE FACTORY-CONFIGURED DEVICES ON THE SAME NETWORK, OR THE ETHERNET INTERFACE WILL NOT WORK
(CONFLICT OF IP ADDRESSES 192.168.90.101)**

If the addressing mode with DHCP is activated and an IP address is not received within 1 minute, the device will set an IP address with a fixed error:

169.254.x.y

Where x.y are the last two values of the MAC ADDRESS.

This way it is possible to install more I/O of the R series and then configure the IP with the Seneca Discovery Device software even on networks without a DHCP server.

5. **WEB SERVER**

ATTENTION!

BEFORE ACCESSING THE WEB SERVER, DISCONNECT THE DEVICE FROM THE PROFINET NETWORK

The main purpose of the web server is to:

- Configure the Profinet name of the device without using an external development environment (Tia Portal, Codesys,...)
- Allow the device firmware update

5.1. ACCESS TO THE WEB SERVER

Access to the web server takes place using a web browser and entering the IP address of the device.

On first access the user name and password will be requested.

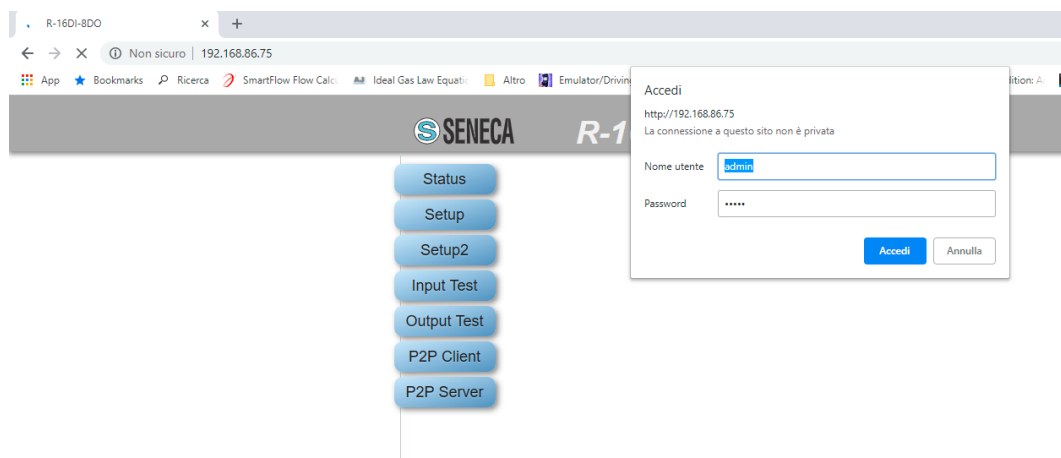
The default values are:

User Name: admin

Password: admin

ATTENTION!

AFTER THE FIRST ACCESS CHANGE USER NAME AND PASSWORD IN ORDER TO PREVENT ACCESS TO THE DEVICE TO UNAUTHORIZED PEOPLE.



ATTENTION!

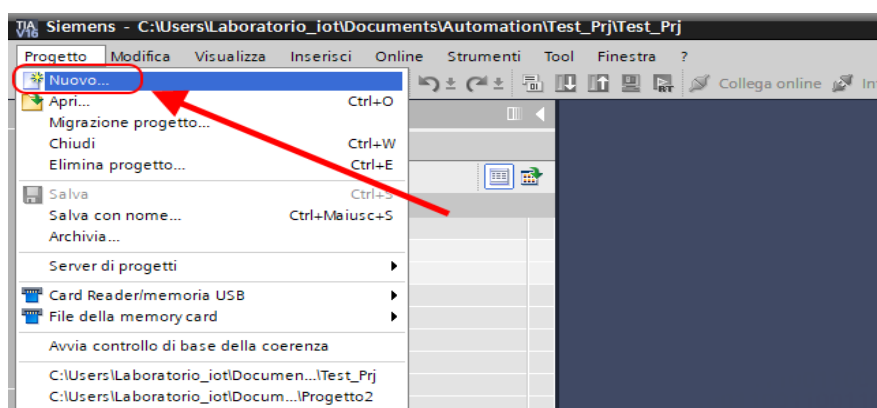
IF THE PARAMETERS TO ACCESS THE WEB SERVER HAVE BEEN LOST, IT IS NECESSARY TO RESET THE FACTORY-SET CONFIGURATION

! **ATTENTION!**

DO NOT INSERT SPECIAL CHARACTERS IN THE PROFINET NAME OF THE DEVICE

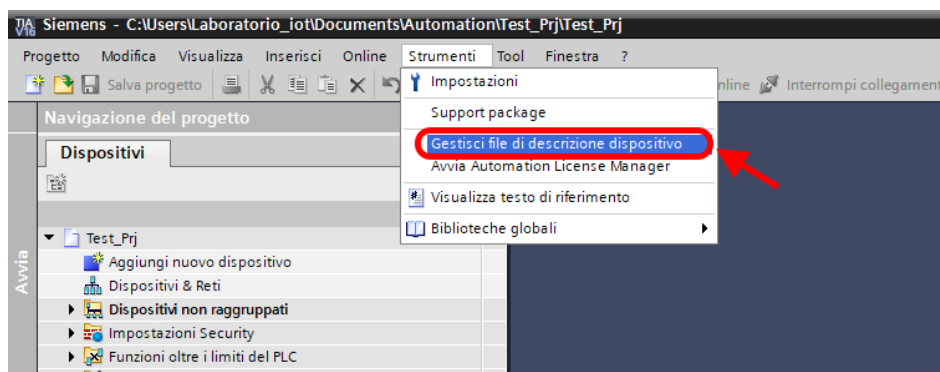
6. EXAMPLE OF CREATING A PROJECT WITH SIEMENS PLC (TIA PORTAL 16)

Creating a new project:

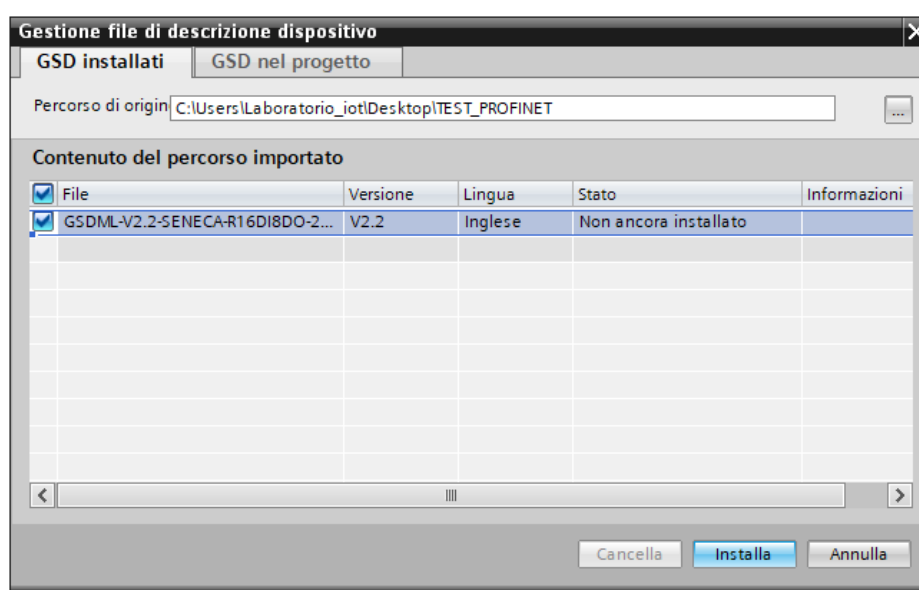


6.1. INSTALLING THE GSDML FILE

Install the GSDML file of the Seneca product (it is possible to obtain the file on the web page of the device on the www.seneca.it site):



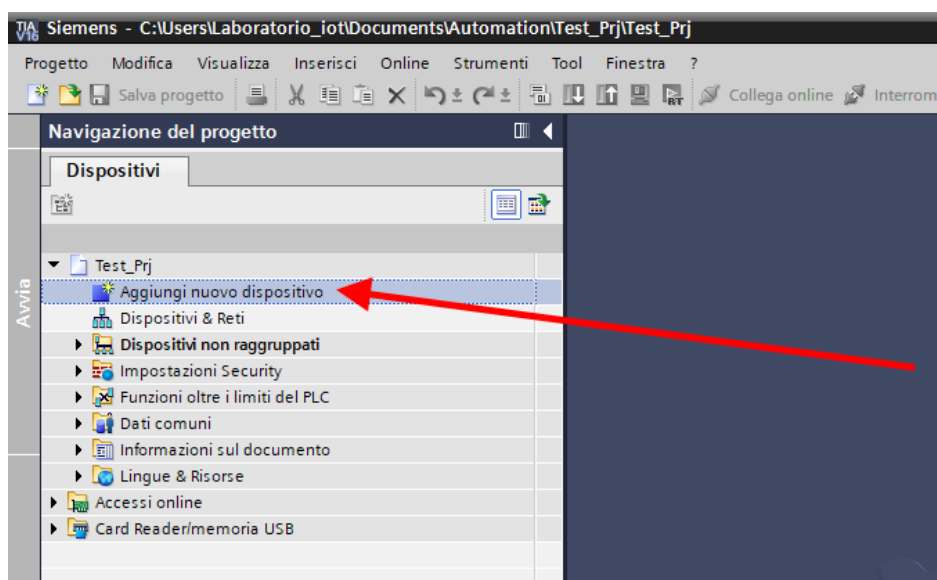
Point to the directory where the file is and press OK, then the list of GSD files in the folder will appear:

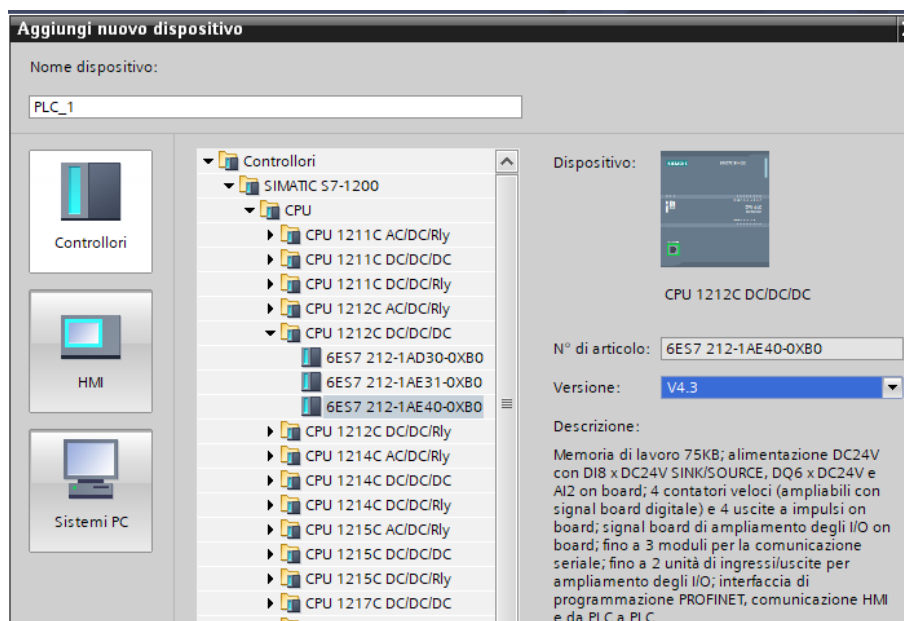


Click on "install".

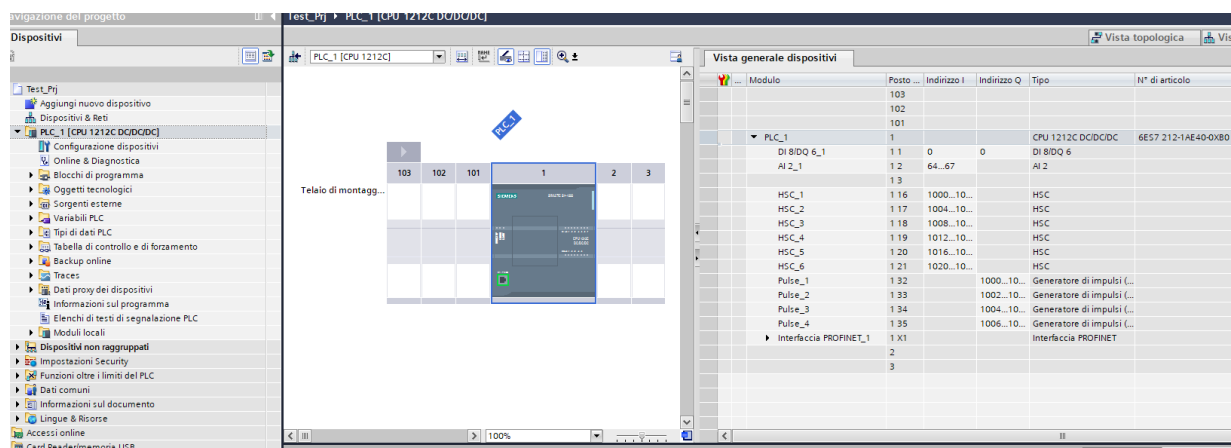
6.2. INSERTION OF THE SIEMENS PLC IN THE PROJECT

Now insert the Siemens PLC (in our example a SIEMATIC S7 1200), click on "Add new device ...":

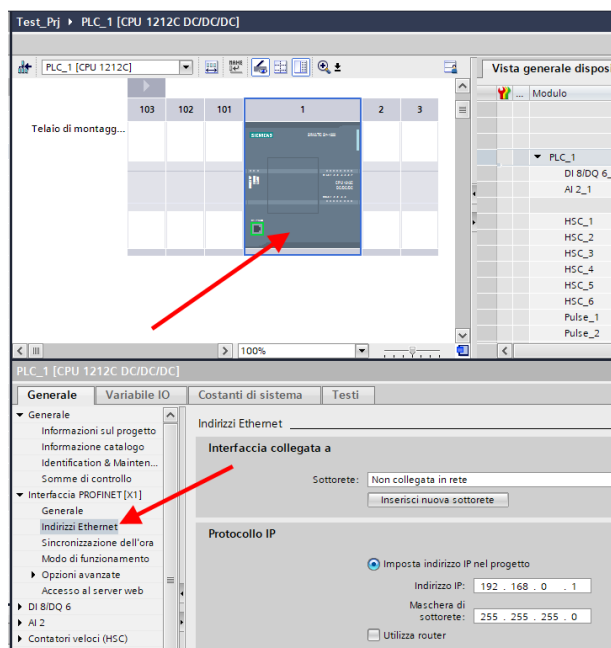




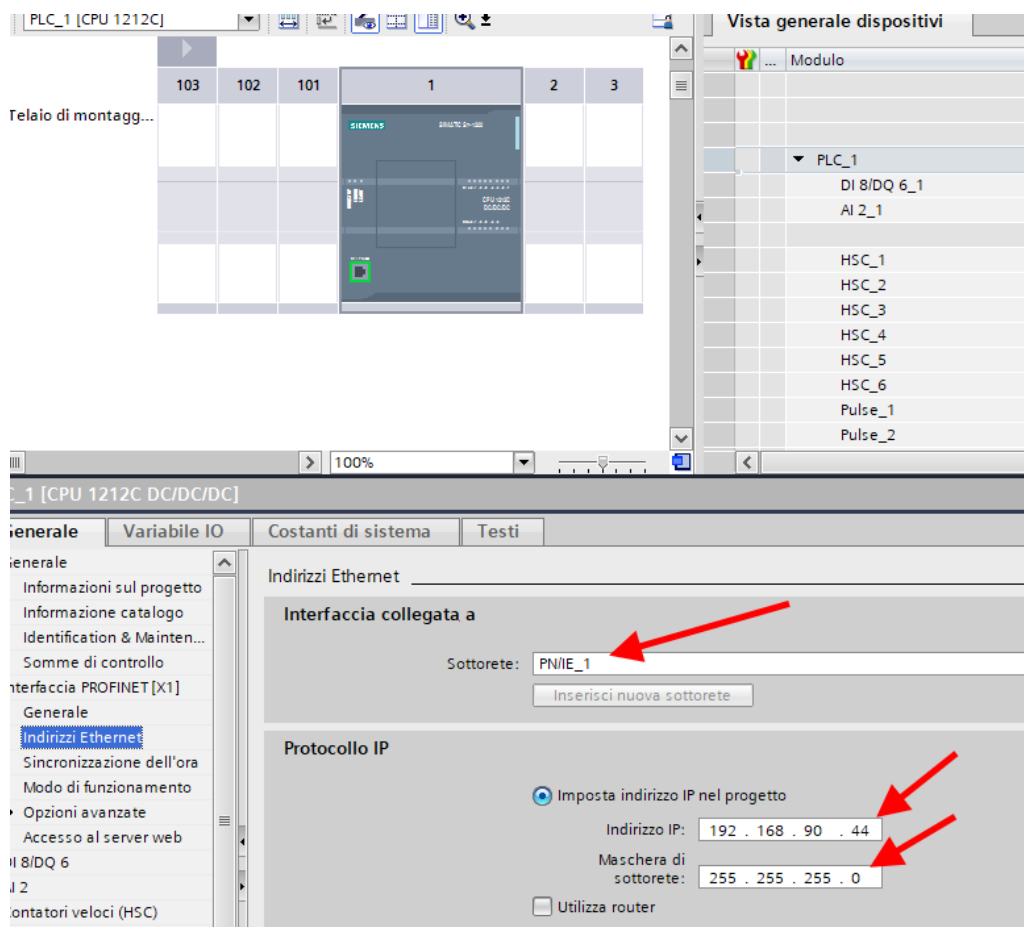
Confirm and the PLC will be added to the rack:



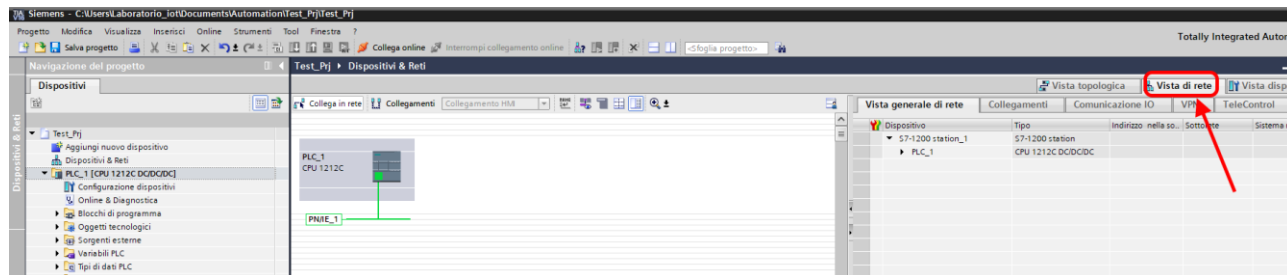
Now click on the PLC and select Profinet interface -> Ethernet addresses



Set the IP you want (in this case 192.168.90.44) and the PLC subnet:

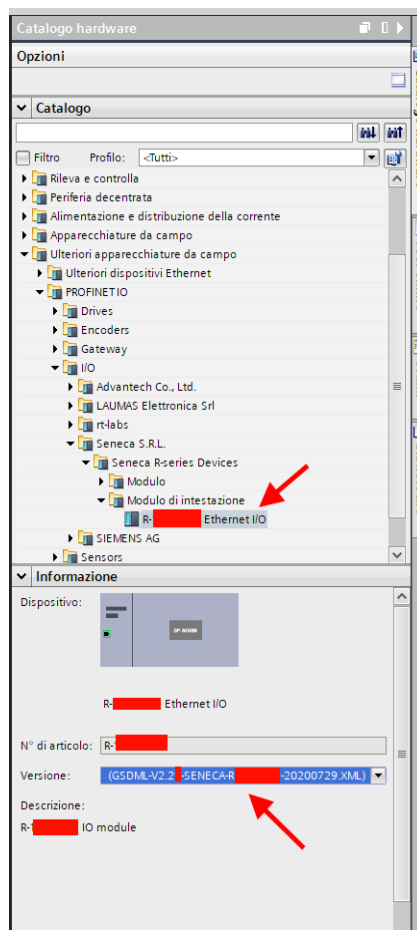


Move on to the network view:

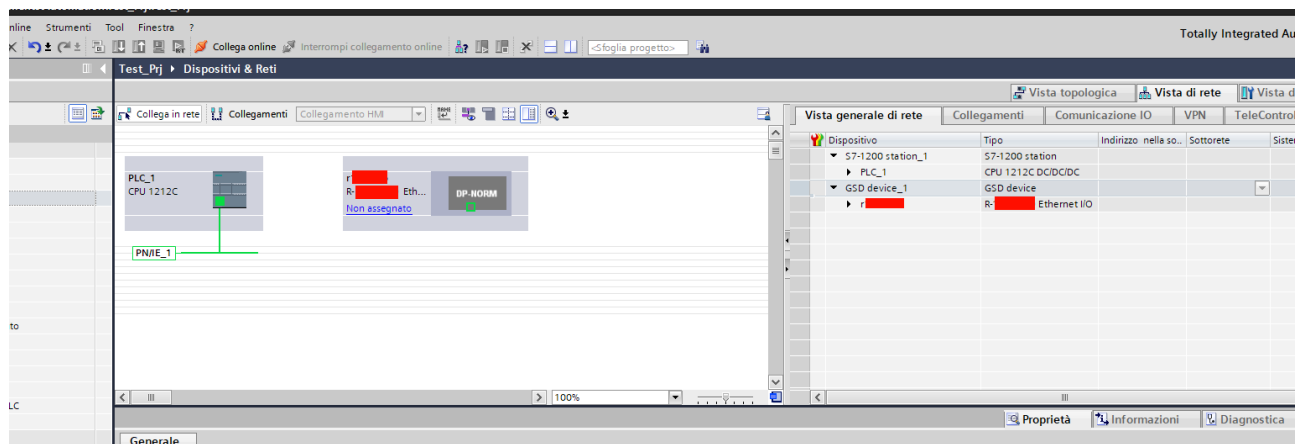


6.3. INSERTION OF THE PROFINET SENECA IO

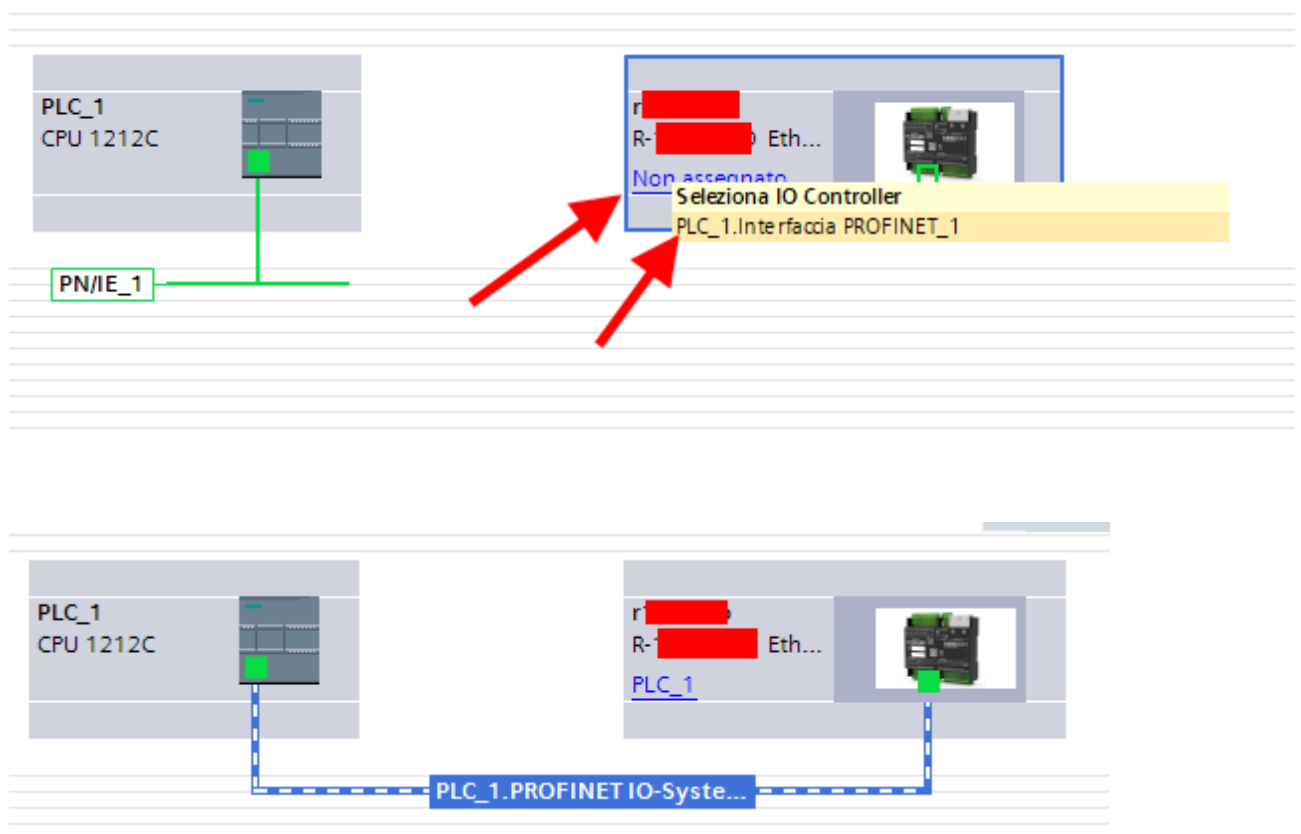
On the right, select "Hardware Catalogue" and then under "Additional Field Device" -> PROFINET IO -> I/O -> Seneca R-Series-> Header module (in the example an R-16DI-8DO device is shown):



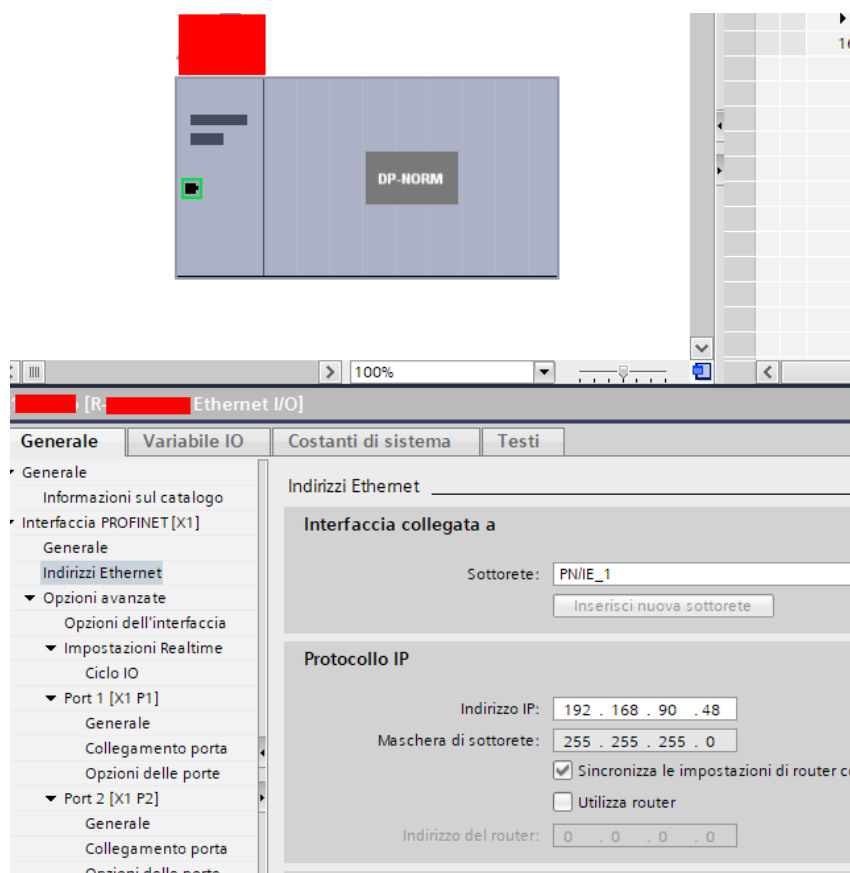
Drag the device to the network view:



Now associate it to the PLC by clicking with the left mouse on "Not assigned" and then select the PLC:



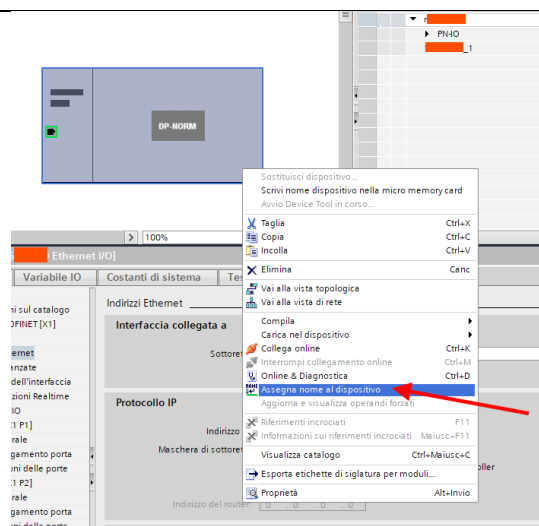
Click twice on the Seneca device and configure the IP address here too (for example 192.168.90.48):



In Profinet the devices are identified by their name, so right click on the Seneca device and select "Assign device name"

ATTENTION!

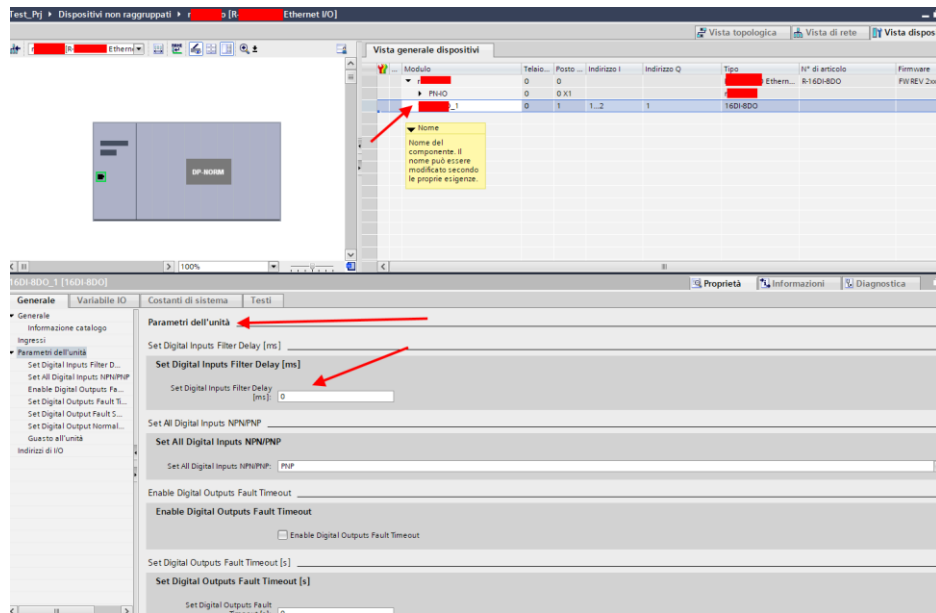
DO NOT INSERT SPECIAL CHARACTERS IN THE PROFINET NAME OF THE DEVICE



Scan the network with "Update list" and set (if necessary) the device name with "Assign name".

6.4. CONFIGURATION OF THE PARAMETERS OF THE SENECA DEVICE

It is also possible to directly configure the device IO without any external software.
To configure the device, click on the IO so that the "Unit parameters" appear:



At the next start, the PLC will send the desired configuration to the device.

6.5. CONFIGURATION PARAMETERS OF THE GSDML FILE

6.5.1. R-32DIDO-P

SET DIGITAL IO INPUT/OUTPUT

Selects whether the selected input will work as an input or output.

SET DIGITAL INPUT NORMALLY HIGH/LOW

If selected as digital input, it configures whether the input is normally high or low.

SET DIGITAL OUTPUT NORMALLY OPEN/CLOSE

If selected as digital output, it configures whether the output is normally open or closed.

SET DIGITAL OUTPUT WATCHDOG

If selected as digital output, it sets the output watchdog mode.

If "Disabled", it disables the watchdog function for the selected output.

If "Enabled on Profinet Communication" the output goes into "Watchdog state" if there has been no generic Profinet communication within the set time.

SET DIGITAL OUTPUT WATCHDOG STATE

Sets the value that the digital output must adopt if the watchdog has been triggered.

SET DIGITAL OUTPUT WATCHDOG TIMEOUT [s]

Represents the watchdog time of the digital output in seconds. If the PLC stops communicating with the device within the set time, then the outputs will go into the "Watchdog state" condition (if the function is enabled).

6.5.2. R-16DI-8DO-P

SET DIGITAL INPUTS FILTER DELAY [ms]

Sets the filtering of the counters, the value is expressed in [ms].

The filter cut-off frequency corresponds to:

$$f_{cut}[Hz] = 1000 / (2 * Counters Filter [ms])$$

For example, if the filter counter is 100ms the cutting frequency will be:

$$f_{cut}[Hz] = 1000 / (2 * Counters Filter [ms]) = 5 Hz$$

So all input frequencies greater than 5 Hz will be cut.

SET ALL DIGITAL INPUTS NPN/PNP

Sets the input operating mode to between npn "Sink" and pnp "Source"

ENABLE DIGITAL OUTPUTS FAULT TIMEOUT

Set whether the digital output watchdog is to activated. When enabled, if within the timeout time there has been no communication from the master to the device, the outputs go into a Fail state. This mode allows to obtain a safe system in case of malfunction of the master.

SET DIGITAL OUTPUTS FAULT TIMEOUT [s]

Set the watchdog time of the digital outputs.

SET DIGITAL OUTPUT FAULT STATES OPEN/CLOSE

They set the states of each of the outputs under normal conditions.

SET DIGITAL OUTPUT NORMALLY OPEN/CLOSE

They set the states of each of the outputs in fail conditions.

6.5.3. R-8AI-8DIDO-P***SET DIGITAL IO INPUT/OUTPUT***

Selects whether the selected input will work as an input or output.

SET DIGITAL INPUT NORMALLY HIGH/LOW

If selected as digital input, it configures whether the input is normally high or low.

SET DIGITAL OUTPUT NORMALLY OPEN/CLOSE

If selected as digital output, it configures whether the output is normally open or closed.

SET DIGITAL OUTPUT WATCHDOG

If selected as digital output, it sets the output watchdog mode.

If "Disabled", it disables the watchdog function for the selected output.

If "Enabled on Profinet Communication" the output goes into "Watchdog state" if there has been no generic Profinet communication within the set time.

SET DIGITAL OUTPUT WATCHDOG STATE

Sets the value that the digital output must adopt if the watchdog has been triggered.

SET DIGITAL OUTPUT WATCHDOG TIMEOUT [s]

Represents the watchdog time of the digital output in seconds. If the PLC stops communicating with the device within the set time, then the outputs will go into the "Watchdog state" condition (if the function is enabled).

SAMPLING TIME

Set the sampling time of the selectable input between 50ms, or 100ms, or 200ms.

SET ANALOG MODE

Set the type of measurement for the selected input.

It is possible to choose between the following types of input:

+30V

+100mV

+20 mA

Thermocouple

PT100 2 wires (for use as a cold junction and only for input 1)

PT100 3 wires (for use as a cold junction and only for input 1).

If the "PT100 2 or 3-wire" type of measurement is selected for input 1, this will automatically be used as a measurement of the cold junction for all inputs configured by thermocouple between IN2 and IN8 included.

SET ANALOG INPUT FILTER (SAMPLES)

Set the number of samples of the moving average used as filter.

SET INPUT START/END SCALE

Represents the start of the electrical scale of the analogue measurement used for the register of the engineering measurement.

The value to enter is in the unit of measurement based on the type of input chosen [V], or [mV], or [uA]

SET INPUT START/END ENG. SCALE

Represents the electrical full scale of the analogue measurement used for the engineering measurement register.

Example:

ANALOG INPUT START SCALE = 4 [mA]

ANALOG INPUT STOP SCALE = 20 [mA]

ANALOG INPUT ENG STOP SCALE = -200 [metres]

ANALOG INPUT ENG START SCALE = 200 [metres]

With a 12 mA input the engineering value will be 0 metres.

SET AIN1 RES. IN PT100 2 WIRE [Ohm]

(Only for analogue input 1) allows to compensate the cable resistance in case of 2-wire connection to the PT100.

SET ANALOG INPUTS TC TYPE

In the case of thermocouple measurement, it allows to select the type of thermocouple between: J, K, R, S, T, B, E, N, L

SET ANALOG INPUTS TC TEMPERATURE OFFSET

Sets a temperature offset in °C for thermocouple measurements

SET ANALOG INPUTS TC COLD JUNCTION MODE

In the case of thermocouple measurement, it enables or disables the automatic cold junction offset of the device. If channel 1 has been configured as PT100 cold junction measurement, this sensor will be used for the offset and not the one inside the instrument.

SET ANALOG INPUTS TC COLD JUNCTION VALUE

In the case of thermocouple measurement, if the measurement of the cold junction has been deactivated, it is possible to manually enter the cold junction temperature.

SET ANALOG INPUTS TC BURNOUT MODE

In the case of thermocouple measurement, it selects the behaviour in case of sensor failure: In the case of "Last Value" the value is stopped at the last valid value, in the case of "Fail Value" the "Burnout" value is loaded in the registers.

SET ANALOG INPUTS TC BURNOUT VALUE

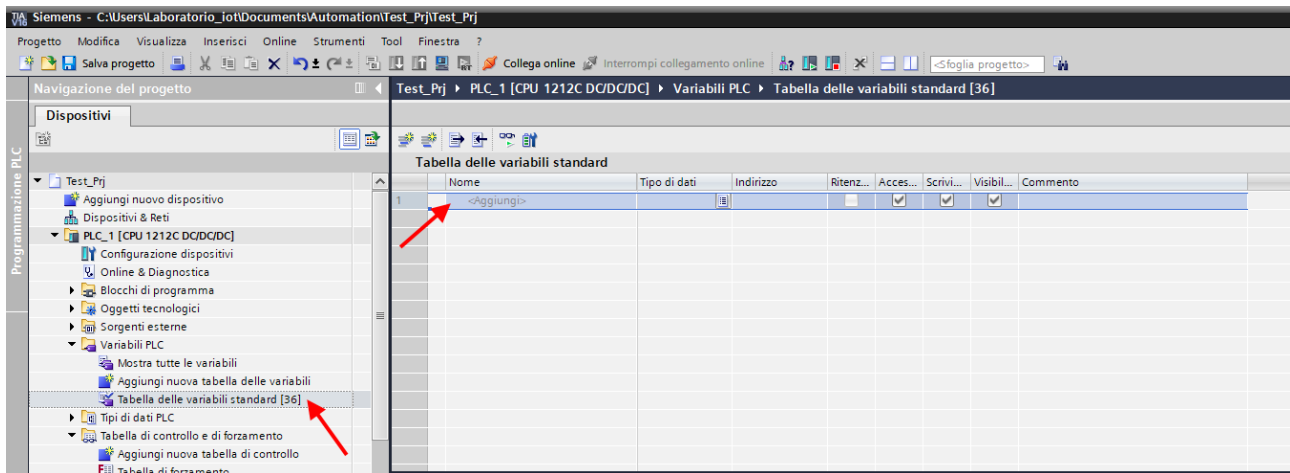
In the case of thermocouple measurement, if the ANALOGUE INPUT BURNOUT MODE = "FAIL VALUE" mode is activated and the sensor is in the "burn" state, it allows you to set a value in °C/K/°F to be taken by the measurement register.

SET ANALOG INPUTS TC UNIT MEASURE

In the case of thermocouple measurement, it allows you to set the measurement unit of the measurement register between °C, K, °F or mV.

6.6. R-32DIDO-P I/O DATA

Define the PLC tags directly in the "standard tag table":



Now let's add the variables related to the IO, the addresses are shown here:

Vista generale dispositivi								
	...	Modulo	Telaio...	Posto ...	Indirizzo I	Indirizz...	Tipo	N° di articolo
		▼ r32didop	0	0			R-32DIDO-P Ethern...	R-32DIDO-P
		► PN-IO	0	0 X1			r32didop	
		32DIDO	0	1	1...4	1...4	32DIDO	

So:

Bytes I1 to I4 contain the inputs (bit 0 is IO1, bit 1 is IO2 etc ...)

Bytes Q1 to Q4 contain the outputs (bit 0 is IO1, bit 1 is IO2 etc ...), obviously only the outputs are writable.

Below is the default mapping of available IOs:

INGRESSO/USCITA	INDIRIZZO DEFAULT IO CONFIGURATO COME INGRESSO	INDIRIZZO DEFAULT IO CONFIGURATO COME USCITA
IO1	I1.0	Q1.0
IO2	I1.1	Q1.1
IO3	I1.2	Q1.2
IO4	I1.3	Q1.3
IO5	I1.4	Q1.4
IO6	I1.5	Q1.5
IO7	I1.6	Q1.6
IO8	I1.7	Q1.7
IO9	I2.0	Q2.0
IO10	I2.1	Q2.1
IO11	I2.2	Q2.2
IO12	I2.3	Q2.3
IO13	I2.4	Q2.4
IO14	I2.5	Q2.5
IO15	I2.6	Q2.6
IO16	I2.7	Q2.7
IO17	I3.0	Q3.0
IO18	I3.1	Q3.1
IO19	I3.2	Q3.2
IO20	I3.3	Q3.3
IO21	I3.4	Q3.4
IO22	I3.5	Q3.5
IO23	I3.6	Q3.6
IO24	I3.7	Q3.7
IO25	I4.0	Q4.0
IO26	I4.1	Q4.1
IO27	I4.2	Q4.2
IO28	I4.3	Q4.3
IO29	I4.4	Q4.4
IO30	I4.5	Q4.5
IO31	I4.6	Q4.6
IO32	I4.7	Q4.7

So if, for example, I need 16 inputs and 16 outputs, I can use the Booleans from I1.0 to I2.7 for the inputs (which will therefore be found in the IO1 ... IO16) and the Booleans from Q3.0 to Q4.7 for the outputs (which will then be found in the IO17 ... IO32).



ATTENTION!

An IO configured as an input cannot be controlled as an output.

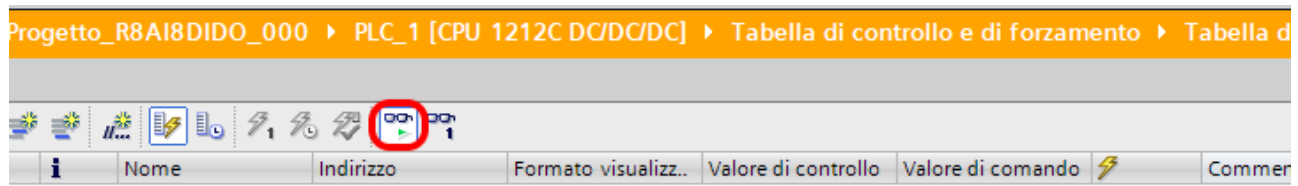
An IO configured as an output cannot be read as an input.

Always following our example (16 inputs and 16 outputs) we define the 16 inputs and 16 outputs in the standard variables table:

Progetto_R32DIDO ▶ PLC_1 [CPU 1211C DC/DC/DC] ▶ Tabella di controllo e di forzamento ▶ Tabella d						
	i	Nome	Indirizzo	Formato visualizz..	Valore di controllo	Valore di comando
1		*IN1*	%I1.0	Bool	TRUE	<input type="checkbox"/>
2		*IN2*	%I1.1	Bool	TRUE	<input type="checkbox"/>
3		*IN3*	%I1.2	Bool	TRUE	<input type="checkbox"/>
4		*IN4*	%I1.3	Bool	TRUE	<input type="checkbox"/>
5		*IN5*	%I1.4	Bool	FALSE	<input type="checkbox"/>
6		*IN6*	%I1.5	Bool	FALSE	<input type="checkbox"/>
7		*IN7*	%I1.6	Bool	FALSE	<input type="checkbox"/>
8		*IN8*	%I1.7	Bool	FALSE	<input type="checkbox"/>
9		*IN9*	%I2.0	Bool	TRUE	<input type="checkbox"/>
10		*IN10*	%I2.1	Bool	FALSE	<input type="checkbox"/>
11		*IN11*	%I2.2	Bool	FALSE	<input type="checkbox"/>
12		*IN12*	%I2.3	Bool	FALSE	<input type="checkbox"/>
13		*IN13*	%I2.4	Bool	FALSE	<input type="checkbox"/>
14		*IN14*	%I2.5	Bool	FALSE	<input type="checkbox"/>
15		*IN15*	%I2.6	Bool	FALSE	<input type="checkbox"/>
16		*IN16*	%I2.7	Bool	FALSE	<input type="checkbox"/>
17		*OUT17*	%Q3.0	Bool		<input type="checkbox"/>
18		*OUT18*	%Q3.1	Bool		<input type="checkbox"/>
19		*OUT19*	%Q3.2	Bool		<input type="checkbox"/>
20		*OUT20*	%Q3.3	Bool		<input type="checkbox"/>
21		*OUT21*	%Q3.4	Bool		<input type="checkbox"/>
22		*OUT22*	%Q3.5	Bool		<input type="checkbox"/>
23		*OUT23*	%Q3.6	Bool		<input type="checkbox"/>
24		*OUT24*	%Q3.7	Bool		<input type="checkbox"/>
25		*OUT25*	%Q4.0	Bool		<input type="checkbox"/>
26		*OUT26*	%Q4.1	Bool		<input type="checkbox"/>
27		*OUT27*	%Q4.2	Bool		<input type="checkbox"/>
28		*OUT28*	%Q4.3	Bool		<input type="checkbox"/>
29		*OUT29*	%Q4.4	Bool		<input type="checkbox"/>
30		*OUT30*	%Q4.5	Bool		<input type="checkbox"/>
31		*OUT31*	%Q4.6	Bool		<input type="checkbox"/>
32		*OUT32*	%Q4.7	Bool		<input type="checkbox"/>
33		<Aggiungi>				<input type="checkbox"/>

Now compile, send the project and go online with the PLC.

Once online, press the glasses icon to update the status of the variables.



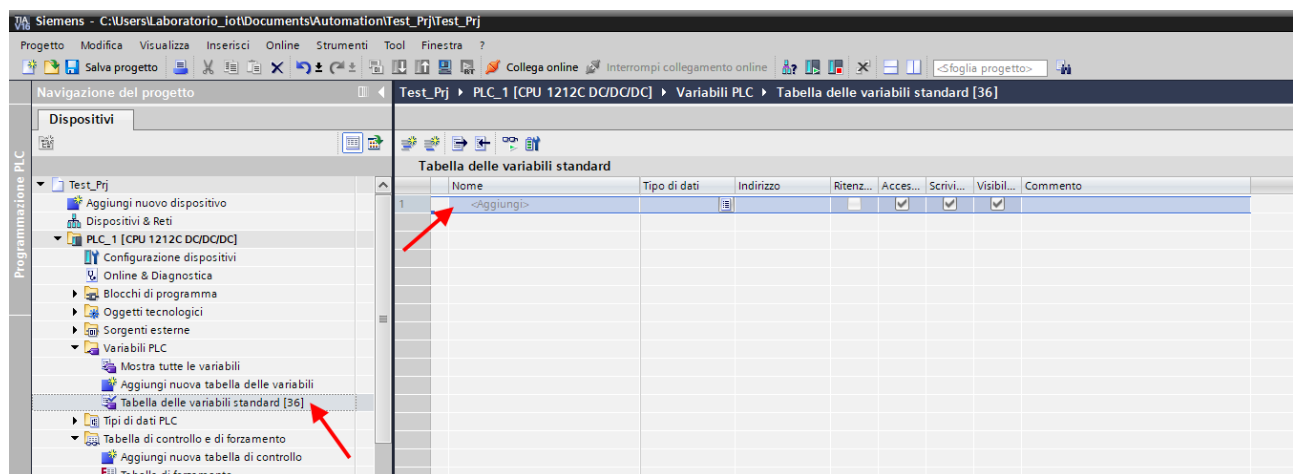
Under the "Control value" column you can read the I/O value in real time.

To control the outputs, it is necessary to enter "TRUE" or "FALSE" in the "Command value" column and then press the icon with the lightning bolt to order the writing. Note the status of the LED relating to the commanded output.

In the "Control value" column, the status of the outputs is also read in real time.

6.7. R-16DI-8DO-P I/O DATA

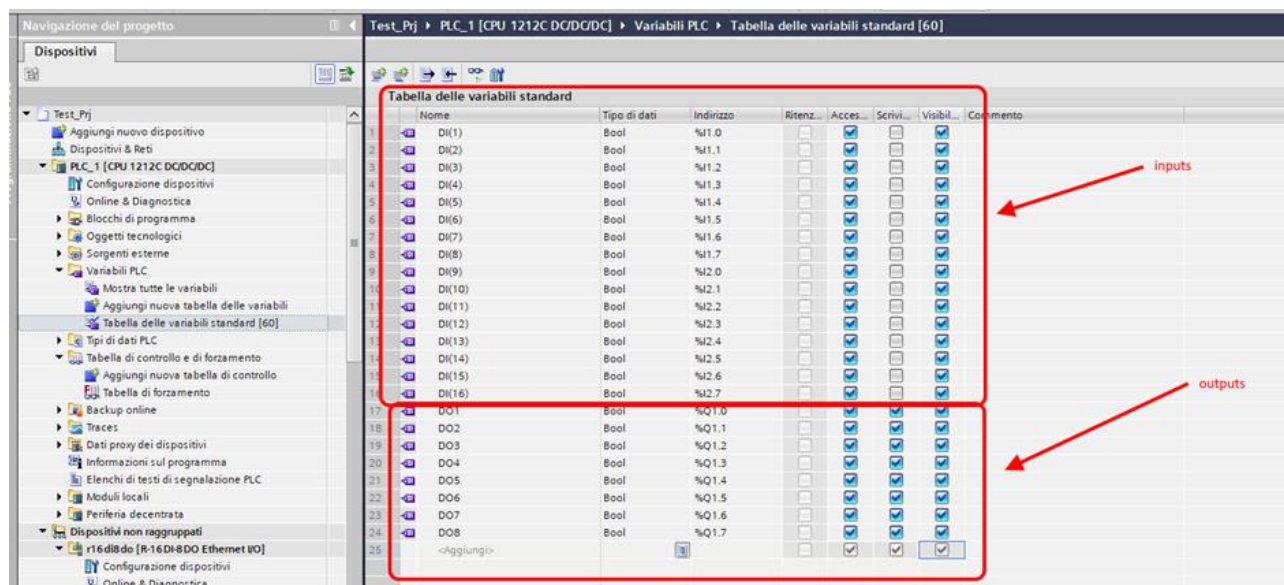
Define the PLC tags directly in the "standard tag table":



Add the tags related to the IO (in the example it is an R-16DI-8DO that is 16 digital inputs and 8 digital outputs). The addresses are written here:

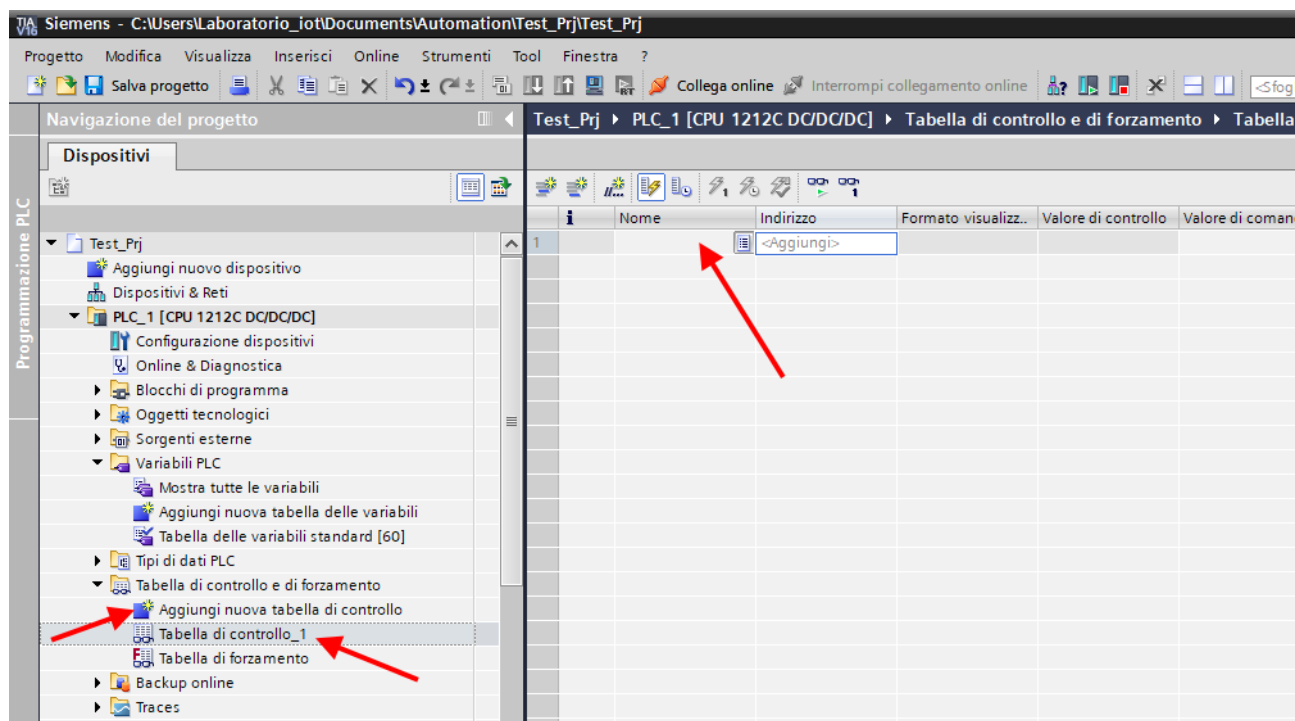
Vista generale dispositivi							
Modulo	Telaio...	Posto ...	Indirizzo I	Indirizzo Q	Tipo	N° di articolo	
▼ r16di8do	0	0			R-16DI-8DO Ethern...	R-16DI-8DO	
▶ PN-IO	0	0 X1			r16di8do		
16DI-8DO_1	0	1	1...2	1	16DI-8DO		

So bytes I1 and I2 contain the 16 inputs, byte Q1 the 8 outputs:

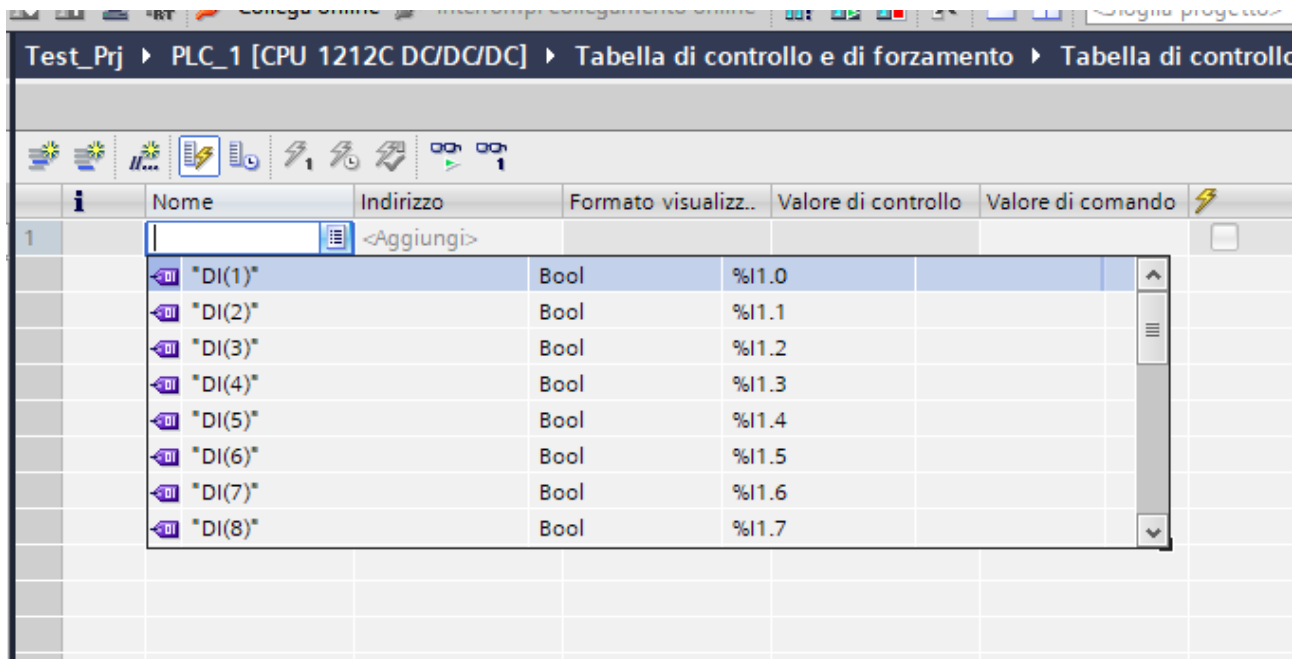


After this operation, define a new control table:

Click on "Add new control table" and then insert the variables



Since you have already defined them previously, just select the ones we want to monitor from the list:

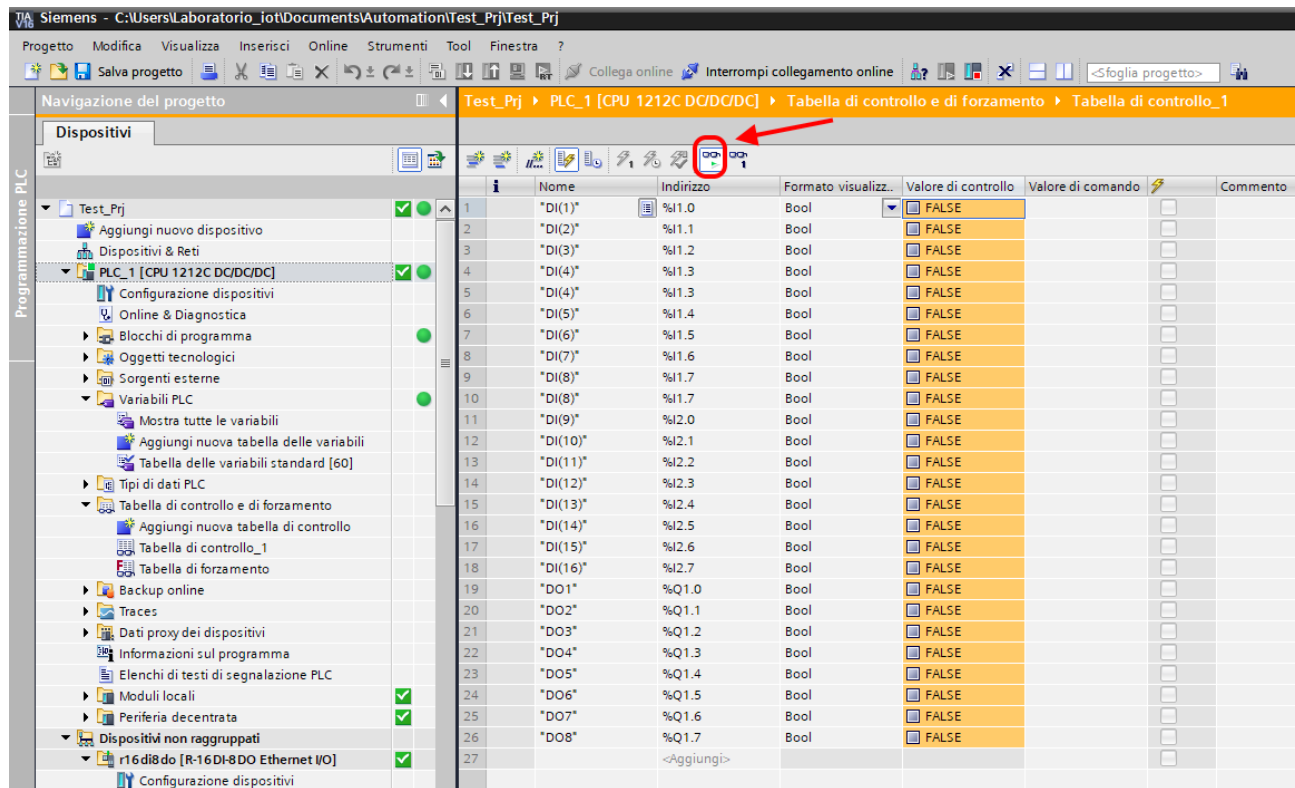


Once you have added all of them you will get:

Test_Prj > PLC_1 [CPU 1212C DC/DC/DC] > Tabella di controllo e di forzamento > Tabella di controllo_1								
	Nome	Indirizzo	Formato visualizz..	Valore di controllo	Valore di comando		Commento	Commento della variabile
1	*DI(1)*	%I1.0	Bool			<input type="checkbox"/>		
2	*DI(2)*	%I1.1	Bool			<input type="checkbox"/>		
3	*DI(3)*	%I1.2	Bool			<input type="checkbox"/>		
4	*DI(4)*	%I1.3	Bool			<input type="checkbox"/>		
5	*DI(4)*	%I1.3	Bool			<input type="checkbox"/>		
6	*DI(5)*	%I1.4	Bool			<input type="checkbox"/>		
7	*DI(6)*	%I1.5	Bool			<input type="checkbox"/>		
8	*DI(7)*	%I1.6	Bool			<input type="checkbox"/>		
9	*DI(8)*	%I1.7	Bool			<input type="checkbox"/>		
10	*DI(8)*	%I1.7	Bool			<input type="checkbox"/>		
11	*DI(9)*	%I2.0	Bool			<input type="checkbox"/>		
12	*DI(10)*	%I2.1	Bool			<input type="checkbox"/>		
13	*DI(11)*	%I2.2	Bool			<input type="checkbox"/>		
14	*DI(12)*	%I2.3	Bool			<input type="checkbox"/>		
15	*DI(13)*	%I2.4	Bool			<input type="checkbox"/>		
16	*DI(14)*	%I2.5	Bool			<input type="checkbox"/>		
17	*DI(15)*	%I2.6	Bool			<input type="checkbox"/>		
18	*DI(16)*	%I2.7	Bool			<input type="checkbox"/>		
19	*DO1*	%Q1.0	Bool			<input type="checkbox"/>		
20	*DO2*	%Q1.1	Bool			<input type="checkbox"/>		
21	*DO3*	%Q1.2	Bool			<input type="checkbox"/>		
22	*DO4*	%Q1.3	Bool			<input type="checkbox"/>		
23	*DO5*	%Q1.4	Bool			<input type="checkbox"/>		
24	*DO6*	%Q1.5	Bool			<input type="checkbox"/>		
25	*DO7*	%Q1.6	Bool			<input type="checkbox"/>		
26	*DO8*	%Q1.7	Bool			<input type="checkbox"/>		
27	<Aggiungi>					<input type="checkbox"/>		

Now compile, send the project and go online with the PLC (all operations seen previously).

Once online, press the glasses icon to update the status of the variables:



	Nome	Indirizzo	Formato visualizz..	Valore di controllo	Valore di comando	Commento
1	"DI(1)"	%I.0	Bool	FALSE		
2	"DI(2)"	%I.1	Bool	FALSE		
3	"DI(3)"	%I.2	Bool	FALSE		
4	"DI(4)"	%I.3	Bool	FALSE		
5	"DI(4)"	%I.3	Bool	FALSE		
6	"DI(5)"	%I.4	Bool	FALSE		
7	"DI(6)"	%I.5	Bool	FALSE		
8	"DI(7)"	%I.6	Bool	FALSE		
9	"DI(8)"	%I.7	Bool	FALSE		
10	"DI(8)"	%I.7	Bool	FALSE		
11	"DI(9)"	%I.8	Bool	FALSE		
12	"DI(10)"	%I.9	Bool	FALSE		
13	"DI(11)"	%I.10	Bool	FALSE		
14	"DI(12)"	%I.11	Bool	FALSE		
15	"DI(13)"	%I.12	Bool	FALSE		
16	"DI(14)"	%I.13	Bool	FALSE		
17	"DI(15)"	%I.14	Bool	FALSE		
18	"DI(16)"	%I.15	Bool	FALSE		
19	"DO1"	%Q.0	Bool	FALSE		
20	"DO2"	%Q.1	Bool	FALSE		
21	"DO3"	%Q.2	Bool	FALSE		
22	"DO4"	%Q.3	Bool	FALSE		
23	"DO5"	%Q.4	Bool	FALSE		
24	"DO6"	%Q.5	Bool	FALSE		
25	"DO7"	%Q.6	Bool	FALSE		
26	"DO8"	%Q.7	Bool	FALSE		
27		<Aggiungi>				

Under the "Control value" column you can read the I/O value in real time.

To control the outputs, it is necessary to enter "TRUE" in the "Command value" column and then press the icon with the lightning bolt to order the writing:

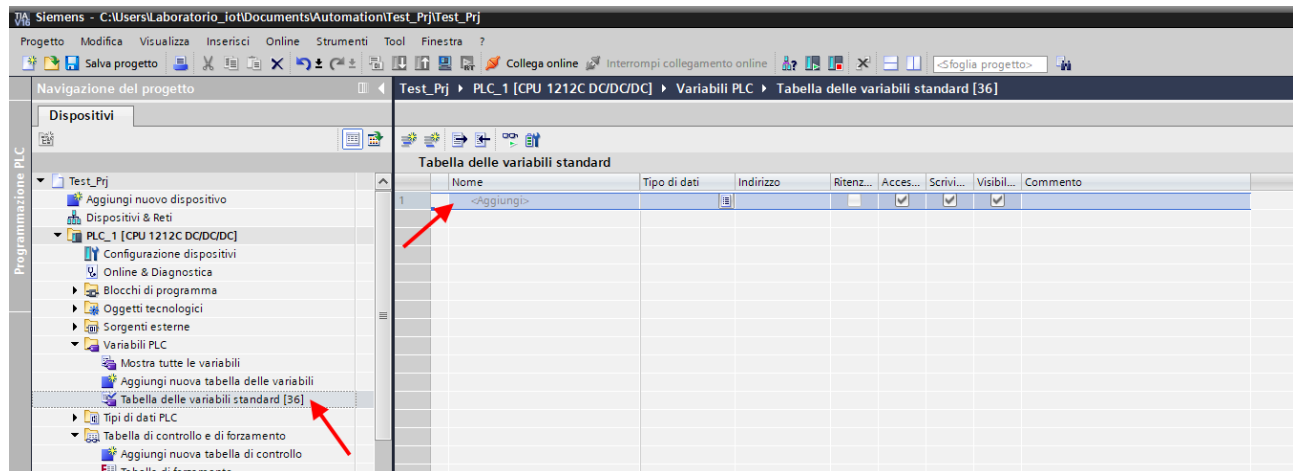
Test_Prj > PLC_1 [CPU 1212C DC/DC/DC] > Tabella di controllo e di forzamento > Tabella di controllo_1

	Nome	Indirizzo	Formato visualizz..	Valore di controllo	Valore di comando	⚡	Comr
1	"DI(1)"	%I1.0	Bool	<input type="checkbox"/> FALSE		<input type="checkbox"/>	
2	"DI(2)"	%I1.1	Bool	<input type="checkbox"/> FALSE		<input type="checkbox"/>	
3	"DI(3)"	%I1.2	Bool	<input type="checkbox"/> FALSE		<input type="checkbox"/>	
4	"DI(4)"	%I1.3	Bool	<input type="checkbox"/> FALSE		<input type="checkbox"/>	
5	"DI(4)"	%I1.3	Bool	<input type="checkbox"/> FALSE		<input type="checkbox"/>	
6	"DI(5)"	%I1.4	Bool	<input type="checkbox"/> FALSE		<input type="checkbox"/>	
7	"DI(6)"	%I1.5	Bool	<input type="checkbox"/> FALSE		<input type="checkbox"/>	
8	"DI(7)"	%I1.6	Bool	<input type="checkbox"/> FALSE		<input type="checkbox"/>	
9	"DI(8)"	%I1.7	Bool	<input type="checkbox"/> FALSE		<input type="checkbox"/>	
10	"DI(8)"	%I1.7	Bool	<input type="checkbox"/> FALSE		<input type="checkbox"/>	
11	"DI(9)"	%I2.0	Bool	<input type="checkbox"/> FALSE		<input type="checkbox"/>	
12	"DI(10)"	%I2.1	Bool	<input type="checkbox"/> FALSE		<input type="checkbox"/>	
13	"DI(11)"	%I2.2	Bool	<input type="checkbox"/> FALSE		<input type="checkbox"/>	
14	"DI(12)"	%I2.3	Bool	<input type="checkbox"/> FALSE		<input type="checkbox"/>	
15	"DI(13)"	%I2.4	Bool	<input type="checkbox"/> FALSE		<input type="checkbox"/>	
16	"DI(14)"	%I2.5	Bool	<input type="checkbox"/> FALSE		<input type="checkbox"/>	
17	"DI(15)"	%I2.6	Bool	<input type="checkbox"/> FALSE		<input type="checkbox"/>	
18	"DI(16)"	%I2.7	Bool	<input type="checkbox"/> FALSE		<input type="checkbox"/>	
19	"DO1"	%Q1.0	Bool	<input checked="" type="checkbox"/> TRUE	TRUE	<input checked="" type="checkbox"/>	
20	"DO2"	%Q1.1	Bool	<input checked="" type="checkbox"/> TRUE	TRUE	<input checked="" type="checkbox"/>	
21	"DO3"	%Q1.2	Bool	<input type="checkbox"/> FALSE		<input type="checkbox"/>	
22	"DO4"	%Q1.3	Bool	<input type="checkbox"/> FALSE		<input type="checkbox"/>	
23	"DO5"	%Q1.4	Bool	<input type="checkbox"/> FALSE		<input type="checkbox"/>	
24	"DO6"	%Q1.5	Bool	<input type="checkbox"/> FALSE		<input type="checkbox"/>	
25	"DO7"	%Q1.6	Bool	<input type="checkbox"/> FALSE		<input type="checkbox"/>	
26	"DO8"	%Q1.7	Bool	<input type="checkbox"/> FALSE		<input type="checkbox"/>	
27	<Aggiungi>					<input type="checkbox"/>	

In the "Control value" column, the outputs are now correctly read to "True".

6.8. R-8AI-8DIDO-P I/O DATA

Define the PLC tags directly in the "standard tag table":



Add the tags related to the IO (in the example it is an R-16DI-8DO that is 16 digital inputs and 8 digital outputs). The addresses are written here:

Vista generale dispositivi							
	Modulo	Telaio...	Posto ...	Indirizzo I	Indirizz...	Tipo	N° di articolo
	▼ r8ai8didop	0	0			R-8AI-8DIDO-P Ethe...	R-8AI-8DID...
	▶ PN-IO	0	0 X1			r8ai8didop	
	8DIDO_1	0	1	1	2	8DIDO	
	8AIN_1	0	2	2...17		8AIN	
	AIN Burn State_1	0	3	18		AIN Burn State	

So byte I1 contains the 8 digital inputs (those as inputs), byte Q2 the 8 outputs (those configured as outputs). Bytes from I2 to I17 show the values of the 8 analogue inputs (2 bytes per input). Byte I3 shows the burnout status of the analogue inputs.

Below is the default mapping of the available digital IOs:

INPUT/OUTPUT	DEFAULT ADDRESS I CONFIGURED AS INPUT	DEFAULT ADDRESS I CONFIGURED AS OUTPUT
IO1	I1.0	Q1.0
IO2	I1.1	Q1.1
IO3	I1.2	Q1.2
IO4	I1.3	Q1.3

IO5	I1.4	Q1.4
IO6	I1.5	Q1.5
IO7	I1.6	Q1.6
IO8	I1.7	Q1.7

The default mapping of the analogue IOs is as follows:

ANALOGUE INPUT	DEFAULT ADDRESS INPUT
AIN1	IW2
AIN 2	IW4
AIN 3	IW6
AIN 4	IW8
AIN 5	IW10
AIN 6	IW12
AIN 7	IW14
AIN 8	IW16

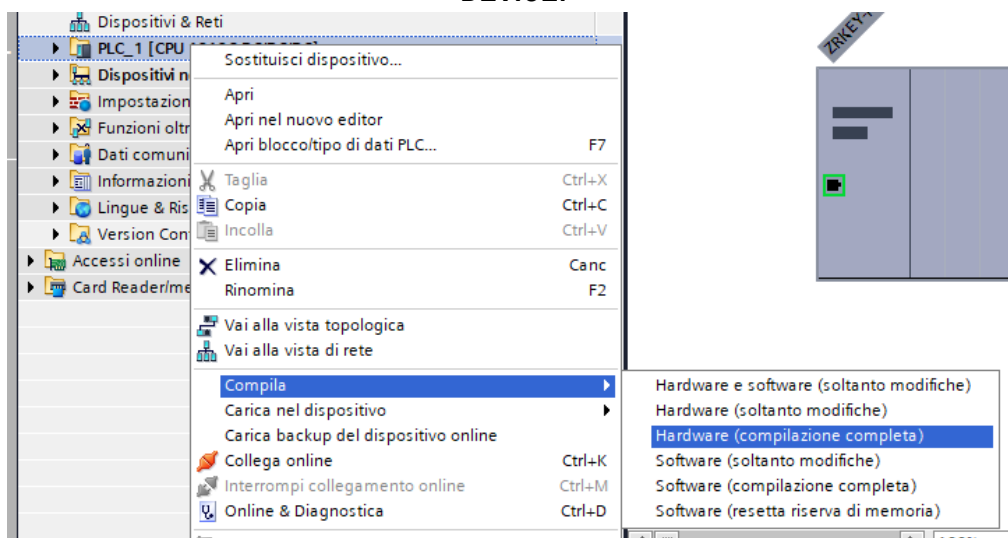
6.9. COMPILATION AND SENDING OF THE PROJECT TO THE SIEMENS PLC

Now that the devices are configured, all that remains is to compile and send the configuration to the PLC.

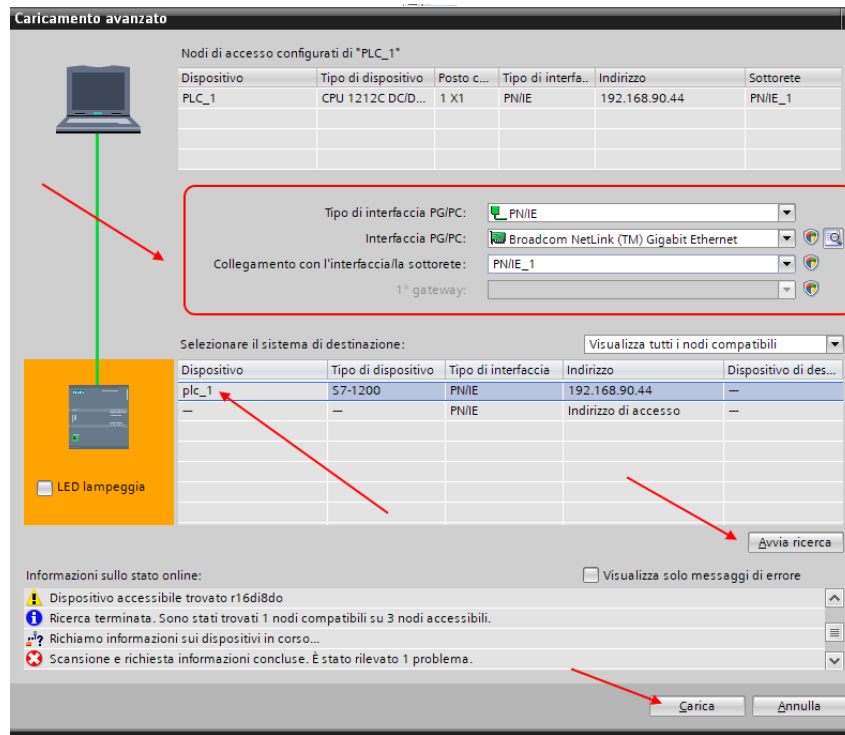


ATTENTION!

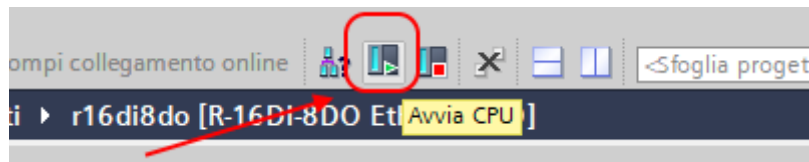
YOU MUST ALWAYS DO A FULL HARDWARE COMPILATION BEFORE SENDING A PROJECT TO THE DEVICE:



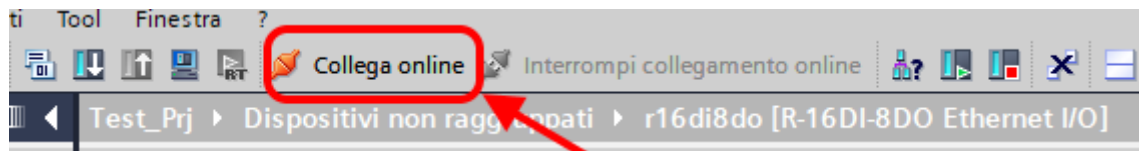
Before sending the project to the PLC, you are asked to select the ethernet interface and start the search, in order to select the PLC and press "Load".



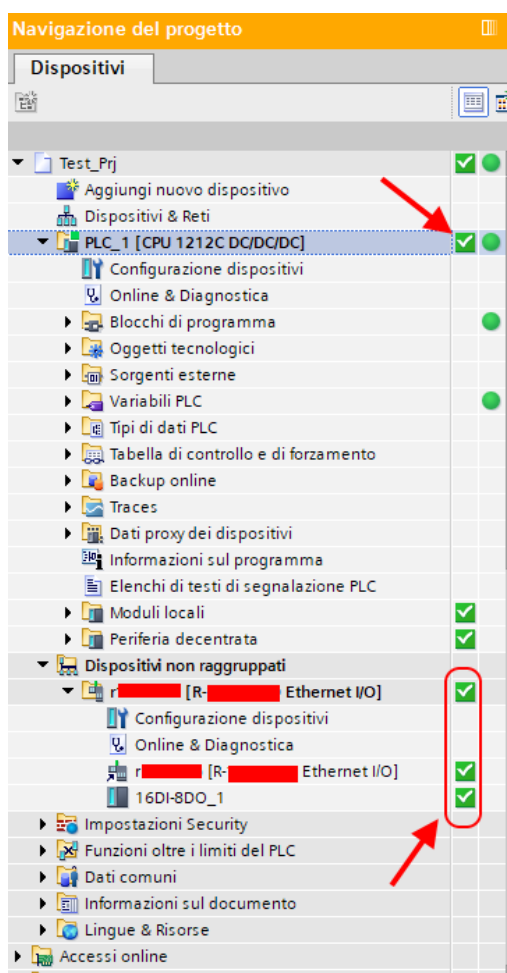
Once the project has been sent, RUN the PLC:



And go ON-Line so as to check if there are any errors:

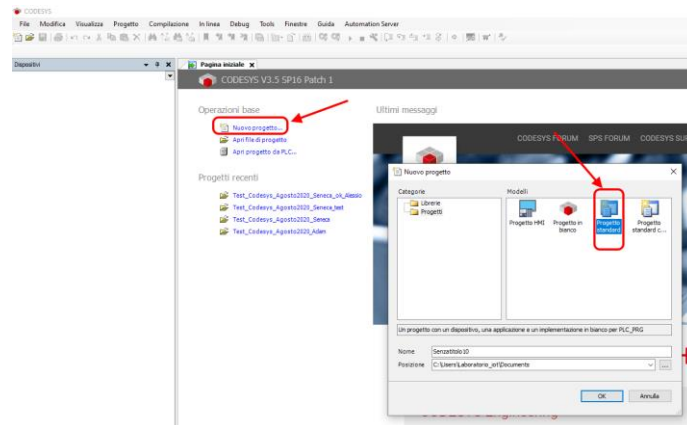


If everything is correct you will get a green icon next to the Seneca device:



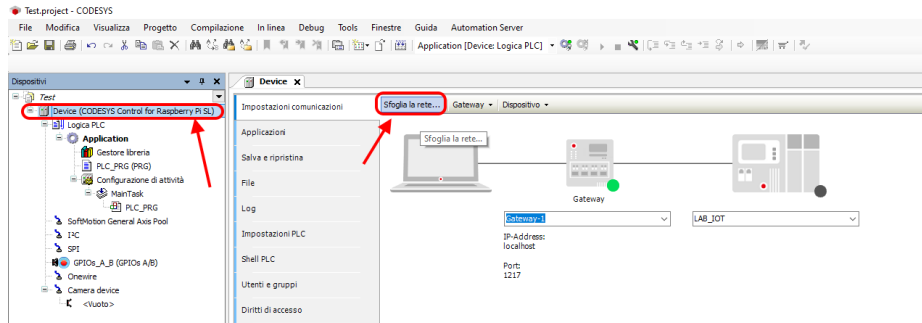
7. EXAMPLE OF CREATING A PROJECT WITH PLC CODESYS 3.5

Create a new standard project:

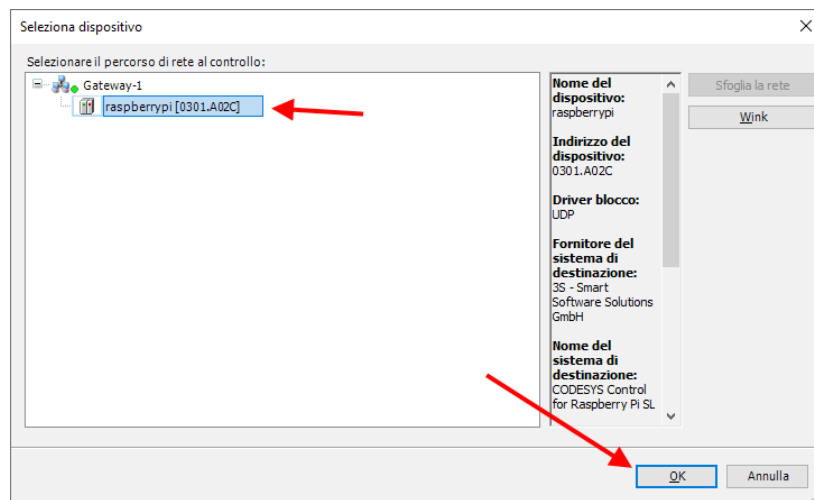


7.1.1. INSERTION OF THE CODESYS PLC IN THE PROJECT

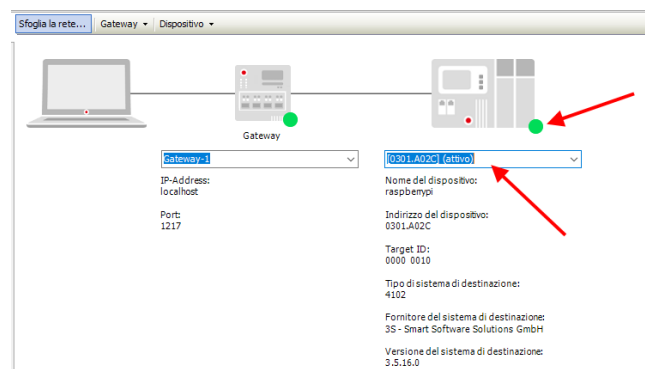
Configure the PLC by selecting it in the tree on the left and then browsing the network:



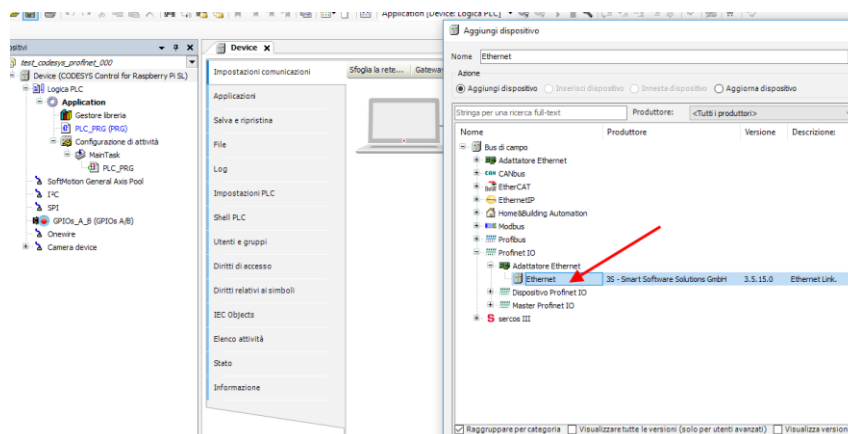
Select the PLC after scanning the network:



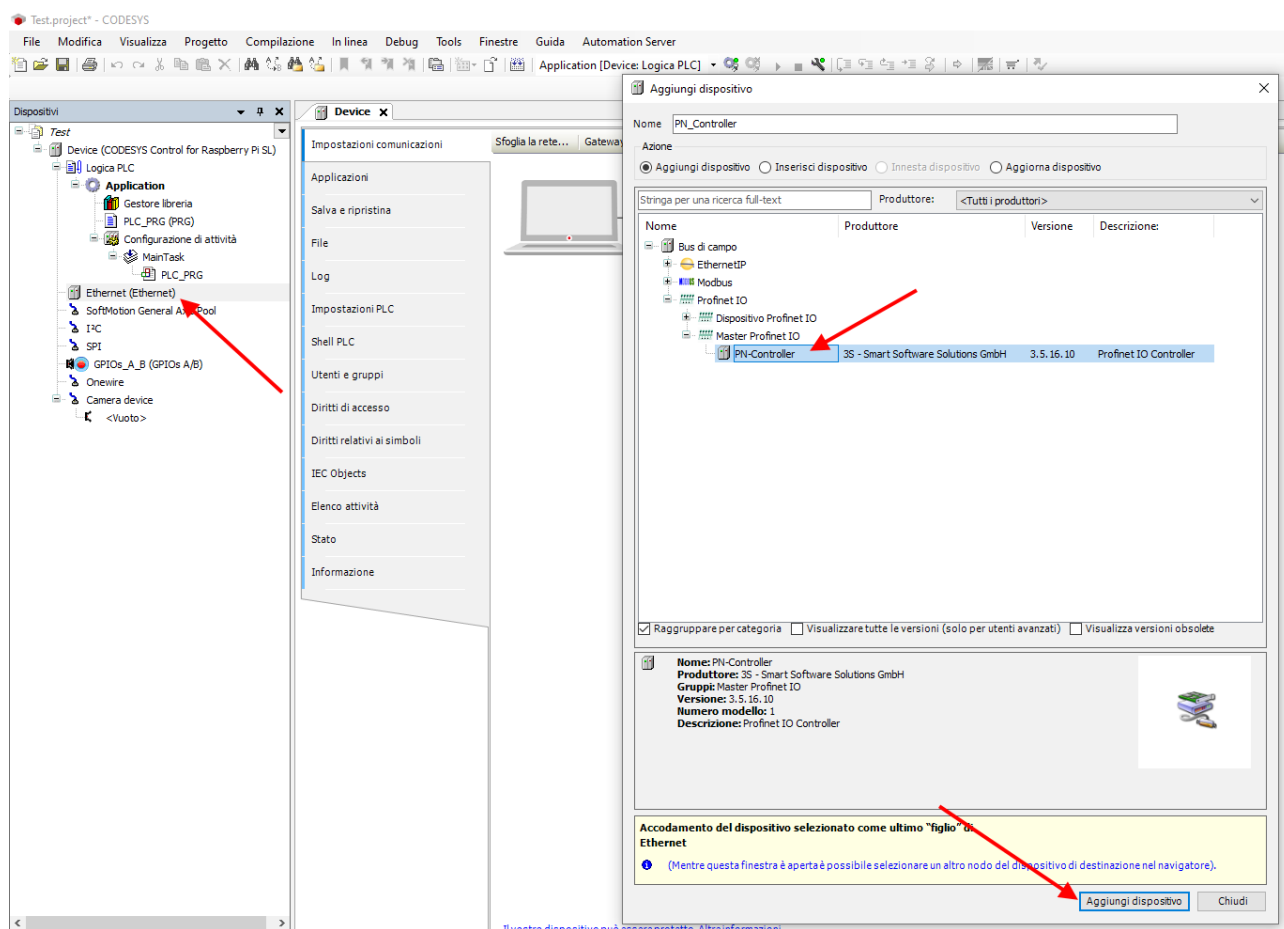
The PLC is now connected to the system:



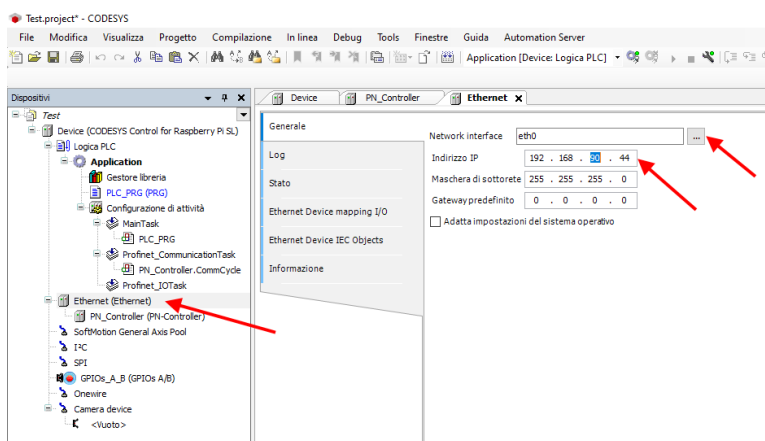
Now that the PLC has been detected, move on to insert a Profinet port on standard Ethernet: Right click on device and "add device":



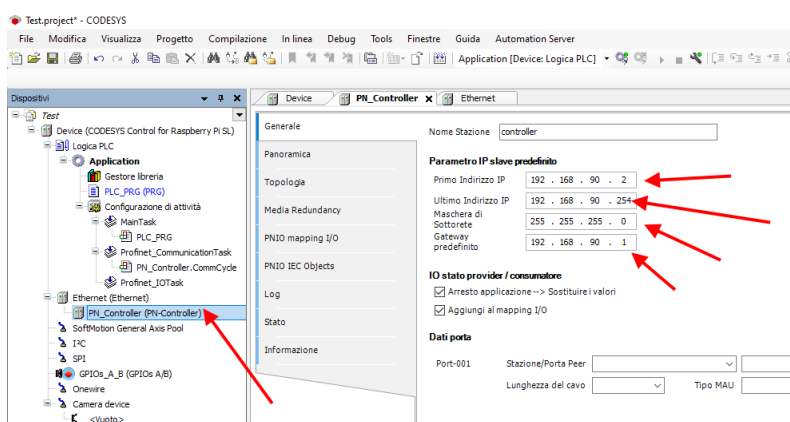
Then add the Profinet IO Master:



Double click on Ethernet, set the Ethernet port and the IP address of the PLC (in this case use 192.168.90.44):



Set also the address range for the Profinet peripheral, double click on PN_Controller:

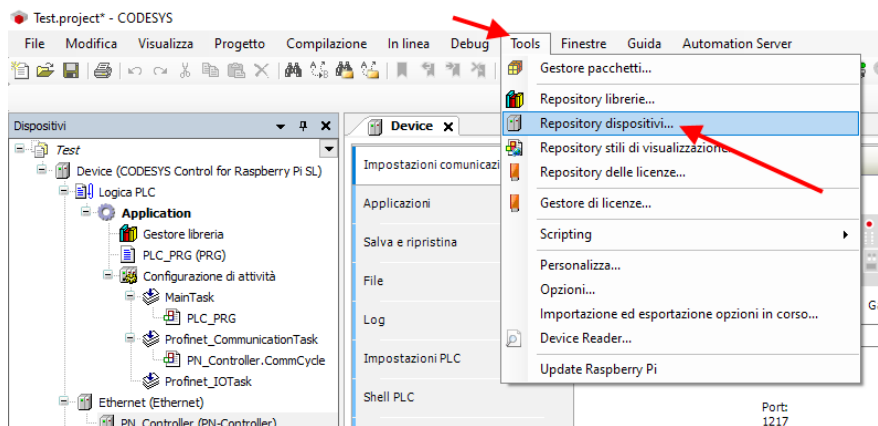


7.1.2. INSTALLING THE GSD

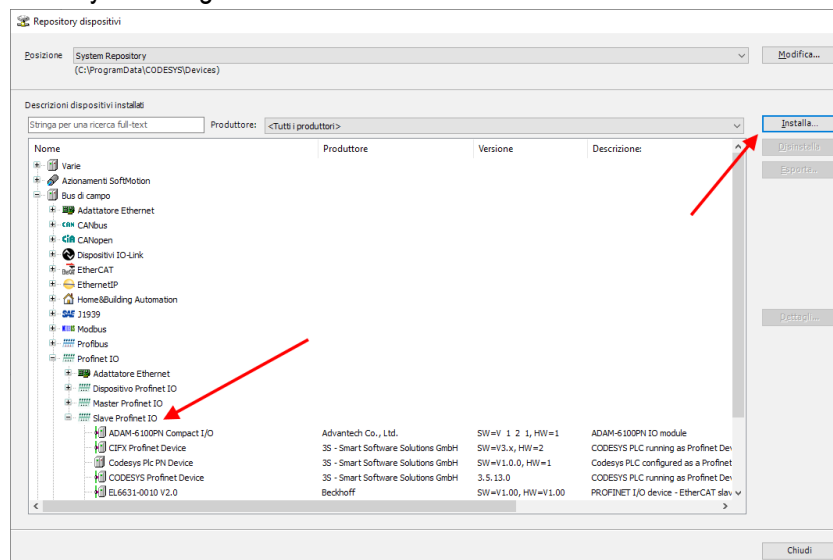
Now you need to connect the Seneca slave device PROFINET IO to the profinet master (controller).

First install the GSD file of the Seneca IO.

Select Tools->Device Repository:



Now import the GSD file by selecting Profinet IO Slave and then Install:

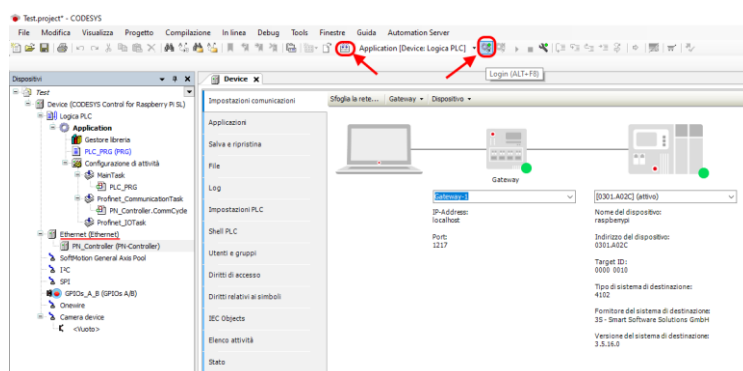


Now point to the correct folder and press OK.

Codesys has now added the GSD file correctly.

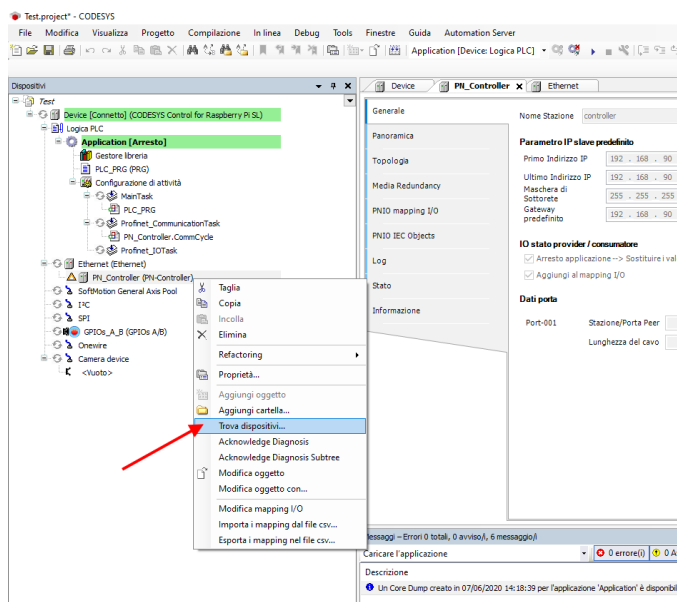
At this point you can scan the network in search of Slave devices (Device).

First compile the project and log in to the PLC:

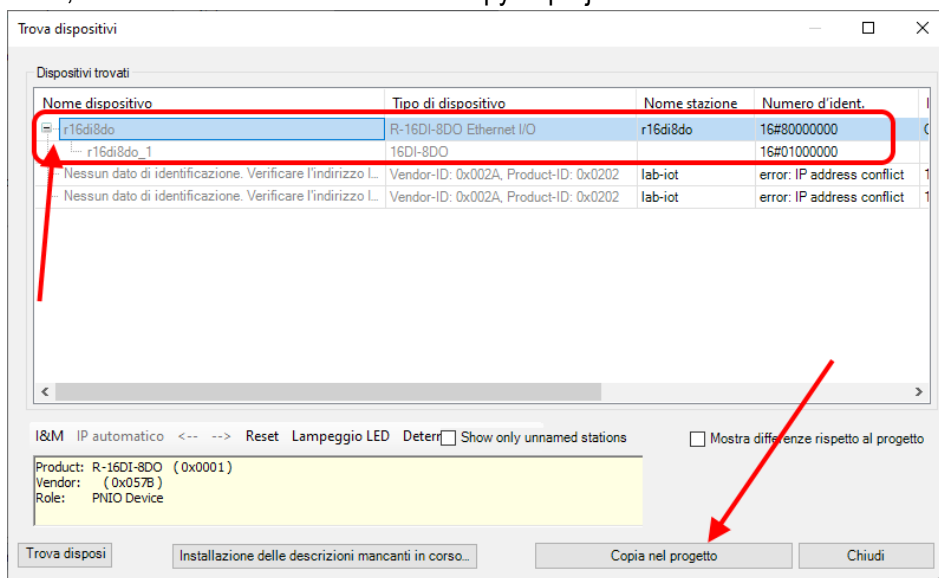


7.1.3. INSTALLATION OF THE SENECA PROFINET IO

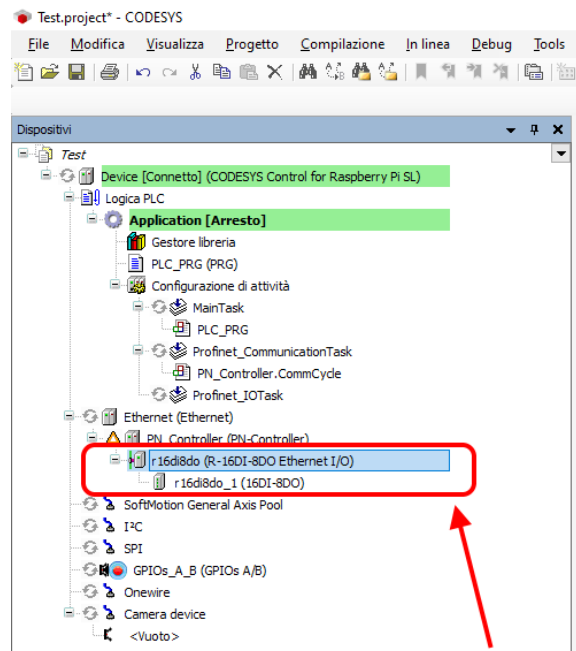
Now that you are connected to the PLC, run the scan to find the devices:



In the list of devices, select the Seneca IO and then "Copy to project":

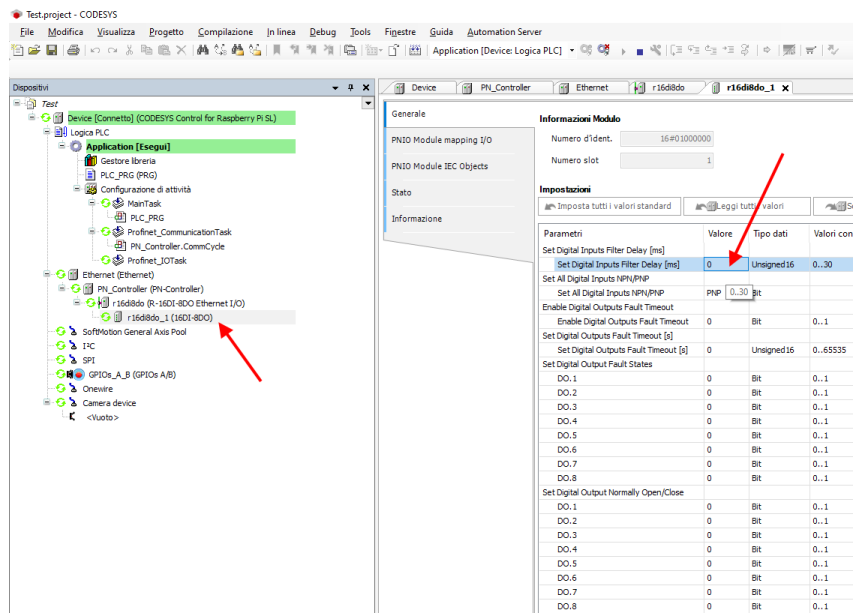


At this point you have added the device to the project:



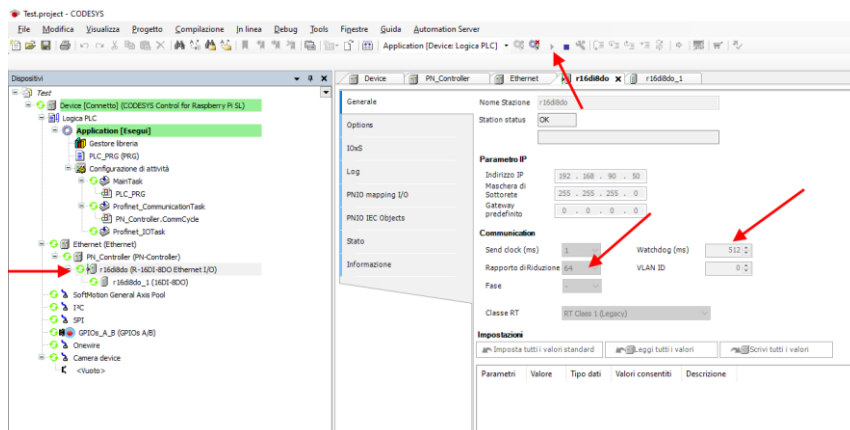
7.1.4. CONFIGURATION OF THE PARAMETERS OF THE SENECA IO

If you want to change the IO configuration parameters, you can set them from here:



Check that everything is correct by compiling and running the PLC.

The PLC (Raspberry-pi) is quite slow and not real time, consequently it cannot manage the profinet at maximum speed so we modify the values by setting safety parameters:

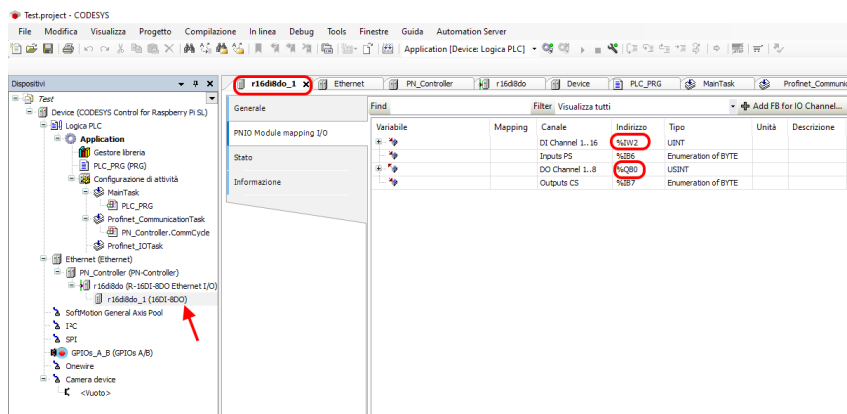


7.1.5. READING AND WRITING THE SENECA IO FROM CODESYS

Now see how it is possible to read and write IO on the Seneca device.

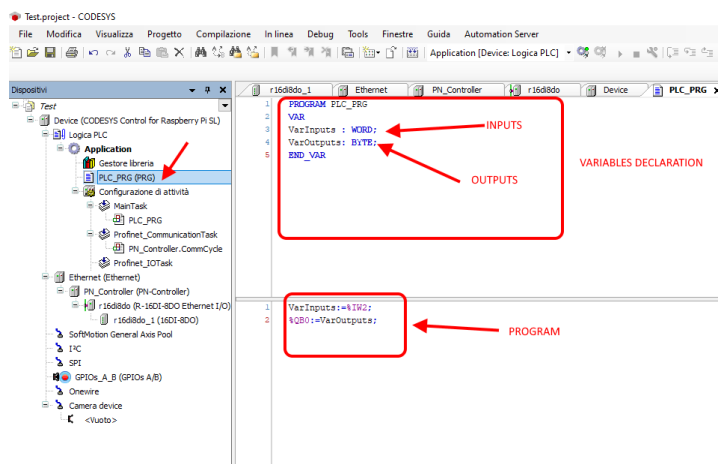
To write and read the status of the IO you have to insert a few code lines under PRG.

In the program, read the inputs from the %IW2 address and write in the %QB0 address as it is obtained from here:



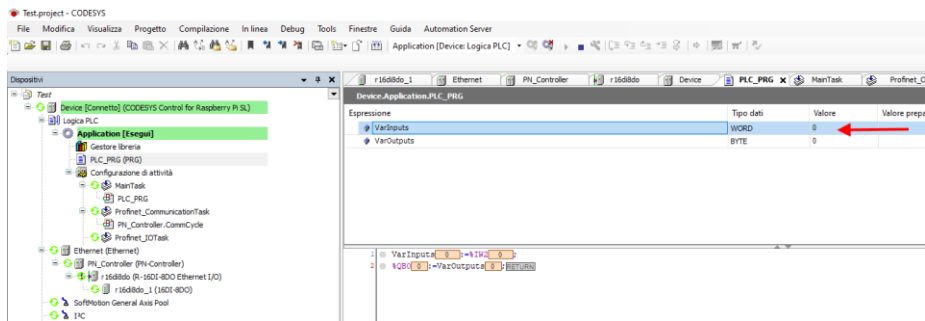
Declare an 8-bit (Word) variable for the 16 inputs and one byte for the 8 outputs.

In the program, instead, read the inputs from %IW2 and write the outputs on %QB0:

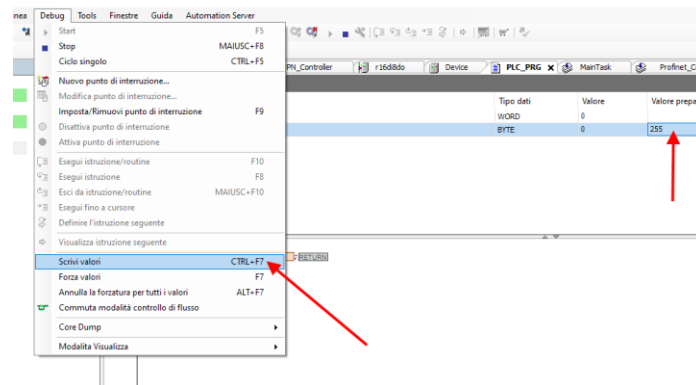


Go into login and start.

The value of the inputs can be read here:



while to write the outputs you just set the byte value in the "prepared value" column, for example by writing 255 decimal = 11111111 binary all the outputs will be brought to 1:



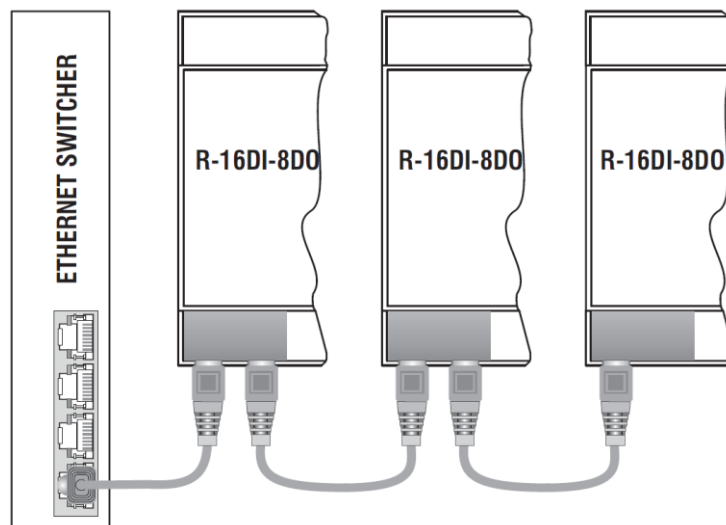
And then with "Write values" all the outputs are activated correctly.

8. CABLE HARNESS FOR MODELS WITH DOUBLE ETHERNET PORT

Models with double Ethernet port can be connected in daisy chain and take advantage of the Lan Fault Bypass.

8.1. CHAIN ETHERNET CONNECTION (DAISY CHAIN)

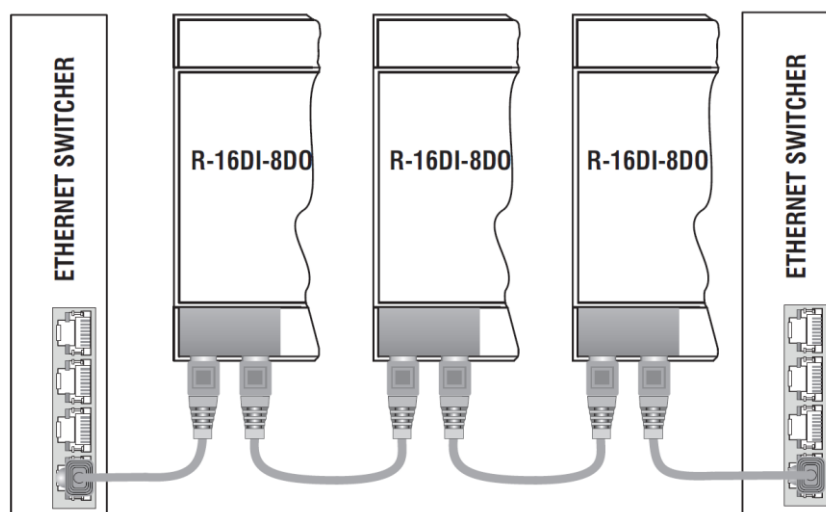
Using the daisy chain connection it is not necessary to use switches to connect the devices. An example (in this case on R-16DI-8DO-P) of connection of 3 devices is as follows:



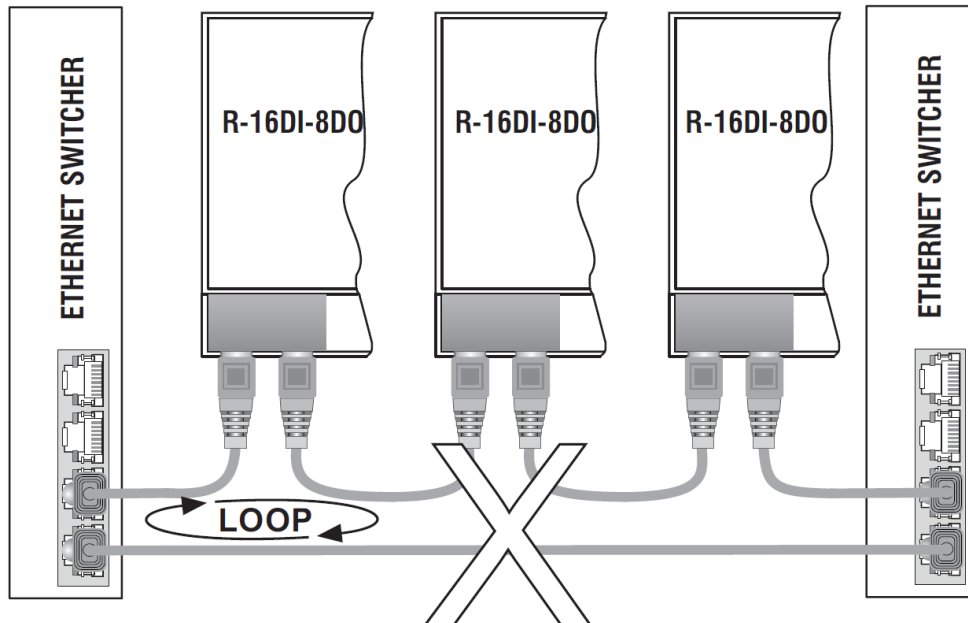
ATTENTION!

IT IS NOT POSSIBLE CREATE LOOPS WITH ETHERNET CABLES

If it is necessary to connect the devices to the switches, correct wiring is as follows:



In the Ethernet wiring there must be no loop, otherwise the communication will not work, some examples of incorrect wiring are the following:



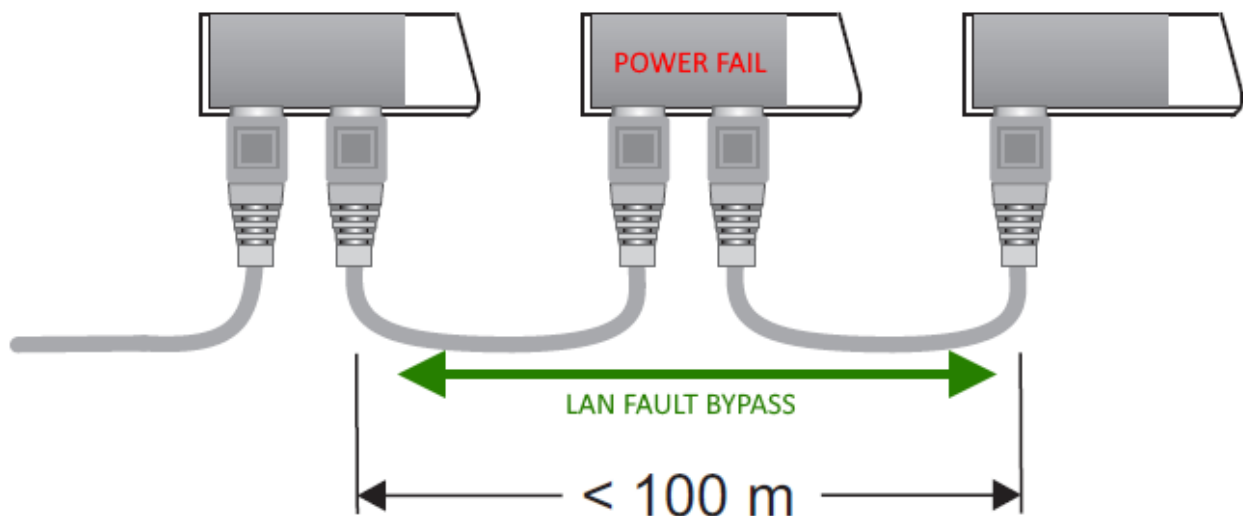
8.2. LAN FAULT-BYPASS FUNCTION

The LAN fault-bypass function allows you to keep the connection between the two Ethernet ports of the device ON, in the event of power failure problems.

If a device turns off, the chain is not interrupted and the devices downstream of the switched-off one will still be accessible.

This function has a limited duration: the connection remains active for a few days, typically 4.

The Lan fault-bypass function requires that the sum of the lengths of the two cables connected to the switched off module is less than 100m.



9. SEARCH AND MODIFICATION OF THE DEVICE IP WITH SENECA DISCOVERY TOOL

When in the R series device the STS LED is on steady, it is possible to obtain the IP address which has been set using the "Seneca Discovery" tool too.

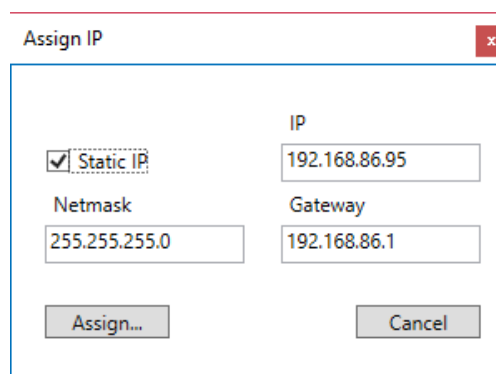
The software can be downloaded from:

<https://www.seneca.it/en/linee-di-prodotto/software/easy/sdd>

Pressing the "search" button starts the search for all Seneca devices present in the network even if with IP addresses not compatible with the current PC configuration:



It is now possible to change the address by pressing the "Assign" button:



The software works on layer 2 level and it is therefore not necessary to have an Ethernet configuration compatible with the device you are looking for.

10. FIRMWARE UPDATE

The firmware update can be performed via the web server in the appropriate section.



ATTENTION!

BEFORE ACCESSING THE WEB SERVER, DISCONNECT THE DEVICE FROM THE PROFINET NETWORK



ATTENTION!

NOT TO DAMAGE THE DEVICE DO NOT REMOVE THE POWER SUPPLY DURING THE FIRMWARE UPDATE OPERATION.