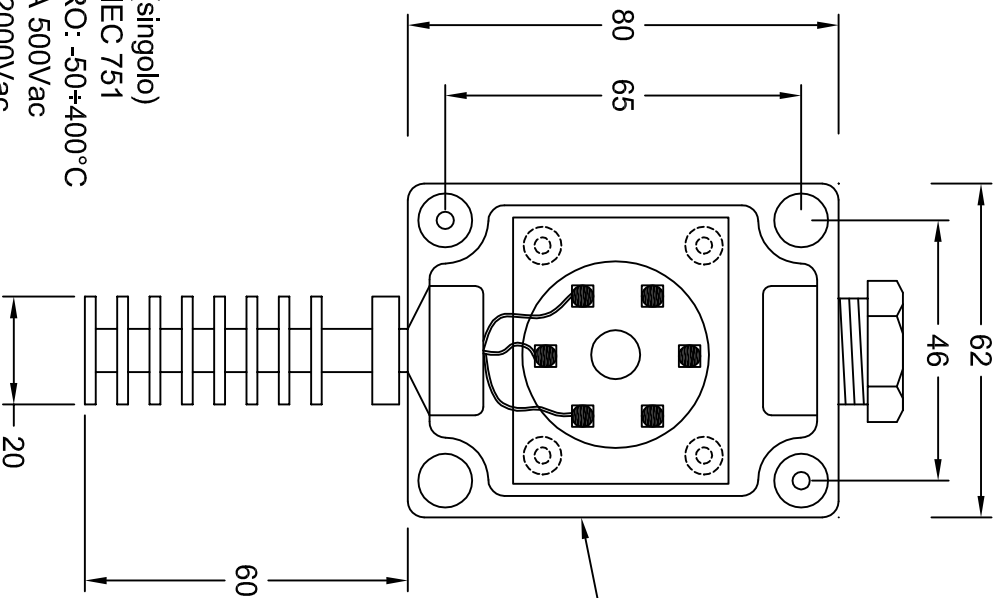
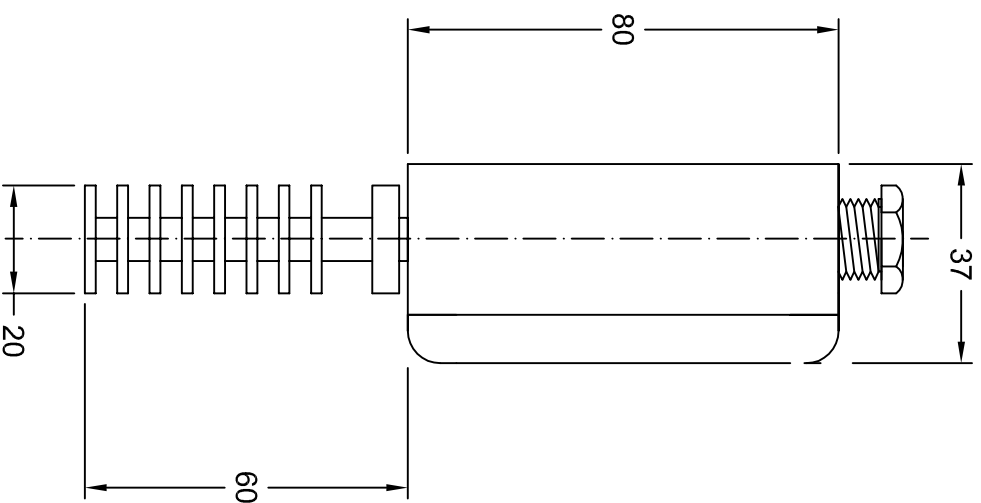


SENSORE : PT 100 Ω
 COLLEGAMENTO : 3 FILI (singolo)
 PRECISIONE : CLASSE A IEC 751
 TEMPERATURA DI LAVORO: -50+400°C
 ISOLAMENTO >20MOHM A 500Vac
 RIGIDITA' DIELETRICA >2000Vac
 GRADO DI PROTEZIONE: IP65



SCATOLA IN ABS



Cliente :

CDU		TTITOLO:							
DESIGN N°	2671	TERMORRESISTENZE Pt100 Ohm							
Drawing no.		PER MISURE AMBIENTE							
FIELD 1	Dr. 1								
Sheet									
REV	DATA	PRIMA EMISSIONE							
A	1.08.2008								
DIS. DES.	APPR. DES.	E.M.	E.M.						