



# USER MANUAL

## LOG FACTORY

### LOG ARCHIVER AND VIEWER

#### **SENECA s.r.l.**

Via Austria 26, PADOVA – ITALY

Tel. +39.049.8705355 – 8705359 Fax. +39.049.8706287

Web site: [www.seneca.it](http://www.seneca.it)

Customer service: [supporto@seneca.it](mailto:supporto@seneca.it) (IT), [support@seneca.it](mailto:support@seneca.it)  
(Other)

Commercial information: [commerciale@seneca.it](mailto:commerciale@seneca.it) (IT), [sales@seneca.it](mailto:sales@seneca.it)  
(Other)



This document is property of SENECA srl. Duplication and reproduction of its are forbidden (though partial), if not authorized. Contents of present documentation refers to products and technologies described in it. Though we strive for reach perfection continually, all technical data contained in this document may be modified or added due to technical and commercial needs; it's impossible eliminate mismatches and discordances completely. Contents of present documentation is anyhow subjected to periodical revision. If you have any questions don't hesitate to contact our structure or to write us to e-mail addresses as above mentioned.

Date	Version	Changes
01/02/2017	1.00	First Revision
16/05/2017	1.01	Changed Title

---

## 1. Table of contents

<b>SENECA LOG FACTORY .....</b>	<b>4</b>
<b>1. PRELIMINARY INFORMATION .....</b>	<b>4</b>
<b>2. WHAT IS LOG FACTORY? .....</b>	<b>4</b>
<b>3. LOG FACTORY INSTALLATION .....</b>	<b>6</b>
<b>4. LOG FACTORY FIRST CONFIGURATION.....</b>	<b>6</b>
4.1. File and Tools Menu .....	7
4.2. Configuration of the source CSV Text data logs .....	7
4.2.1. Configure Log importer for Importing log data from a microSD card.....	8
<b>5. PLAY BUTTON: IMPORTING LOG CSV TO DATABASES .....</b>	<b>8</b>
<b>6. CONFIGURE DIGITAL OR ANALOG TAG IN THE DATABASE.....</b>	<b>8</b>
<b>7. OPEN AND ANALYZE THE DATABASE IN TREND VIEWER .....</b>	<b>9</b>
7.1. Graph normalization .....	13
<b>8. EXPORT TREND DATA TO CSV .....</b>	<b>13</b>
<b>9. PRINT REPORT.....</b>	<b>13</b>
<b>10. LOG IMPORTER CONVERSION TABLE .....</b>	<b>14</b>

# Seneca LOG FACTORY

---

## 1. PRELIMINARY INFORMATION

### **CAUTION!**

**IN NO CASE MAY SENECA OR ITS SUPPLIERS BE HELD LIABLE FOR ANY INCOMING DATA OR PROFIT OR LOSSES DUE TO INDIRECT, CONSEQUENTIAL OR INCIDENTAL CAUSES (INCLUDING NEGLIGENCE) CONNECTED WITH THE USE OR INABILITY TO USE LOG FACTORY, EVEN IF SENECA WAS INFORMED OF THE POTENTIAL OF THESE DAMAGES.**

**SENECA, ITS SUBSIDIARIES OR AFFILIATES OR GROUP PARTNERS OR DISTRIBUTORS AND SENECA DEALERS DO NOT GUARANTEE THAT THE FUNCTIONS FAITHFULLY MEET THE EXPECTATIONS AND THAT THE SOFTWARE LOG FACTORY, ARE FREE OF ERRORS OR FUNCTION UNINTERRUPTEDLY.**

**SENECA HAS TAKEN THE UTMOST CARE AND CAUTION IN DRAFTING THIS MANUAL. HOWEVER, IT MAY CONTAIN ERRORS OR OMISSIONS. SENECA SRL RESERVES THE RIGHT TO MODIFY AND/OR VARY PARTS OF THIS MANUAL TO CORRECT ERRORS OR TO ADJUST TO PRODUCT FEATURE CHANGES WITHOUT ANY PRIOR NOTICE.**

## 2. WHAT IS LOG FACTORY?

Log Factory is a Software suite that is composed by Two different software:

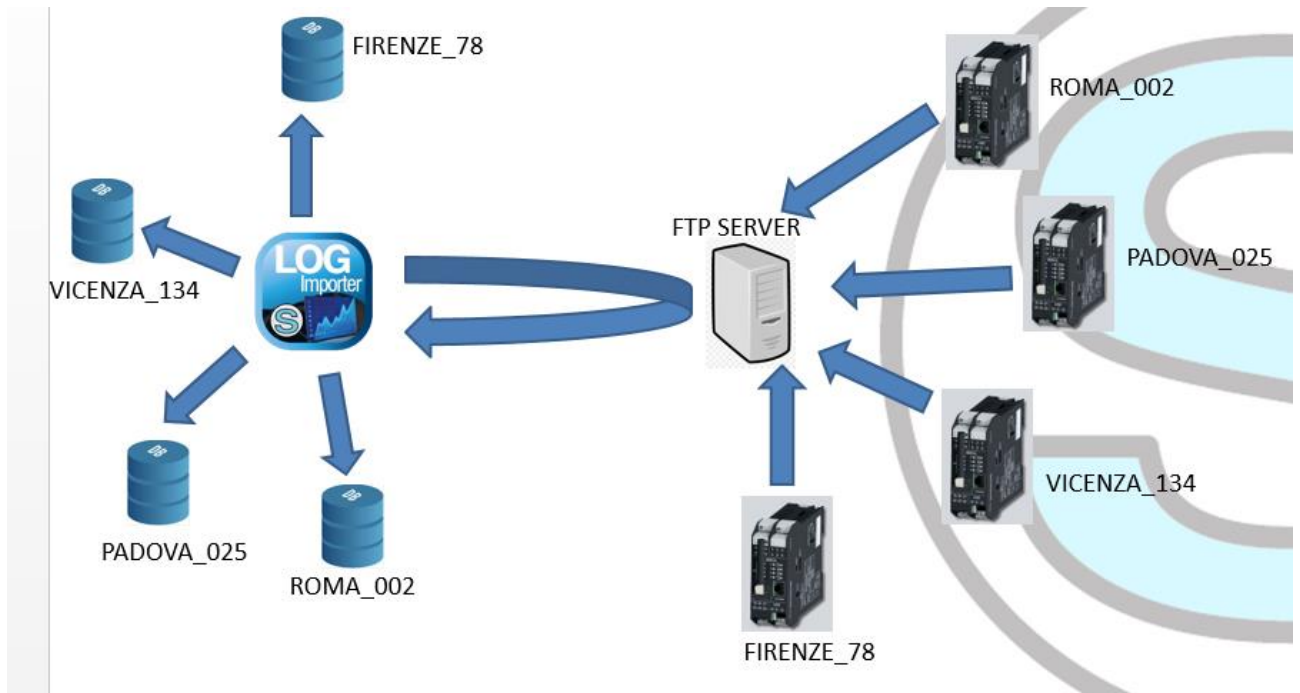
- 1) Log Importer: Automatically acquires “.csv” text log file from:

An FTP server

or

A local/remote directory (also a micro SD card)

and converts it to a database

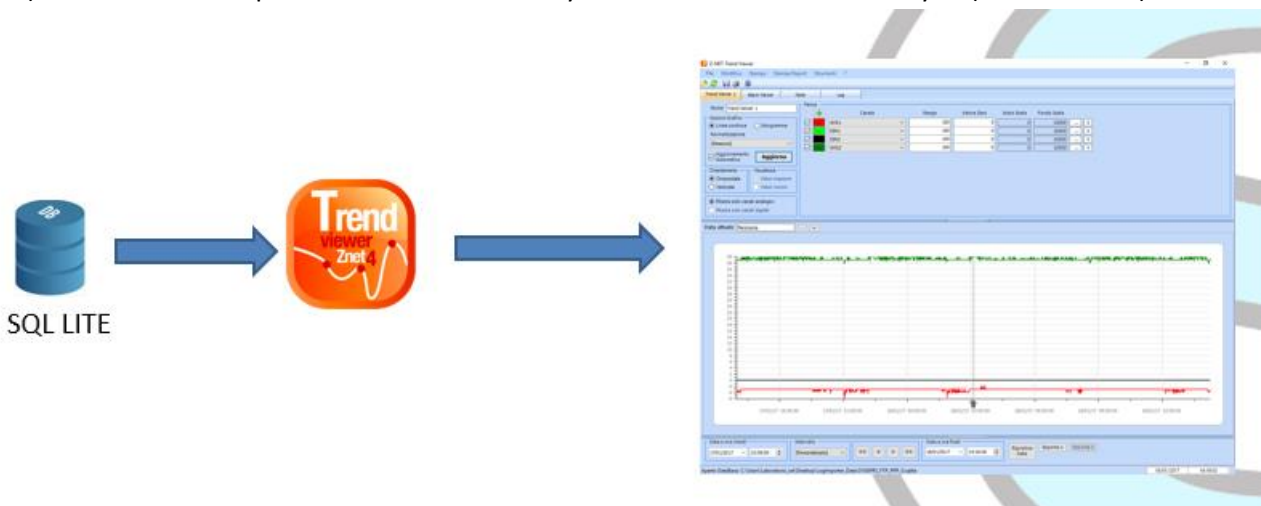


**Warning!**

*Log Importer create One Database for One device (so if you have 10 devices you will get 10 different database). The database name is the station name label.*

*Log importer moves (erases) all files from the source (local or ftp server) to the local backup directory.*

- 2) Trend Viewer: Open a database and show you a trend with data for analysis (Trend Viewer)



**Warning!**

*Log Factory is compatible only with Seneca selected devices.*

**Log Factory will create one Database for one device so the Trend Viewer can not display data from 2 or more different devices at the same time.**

### 3. LOG FACTORY INSTALLATION

Log factory can be installed on Windows 7, Windows 8 or Windows 10 (32 or 64 bits).

If you need to install an FTP server on a windows environment, you can follow this step by step guide:

“FileZilla FTP server Installation manual (Windows OS)” at this address:

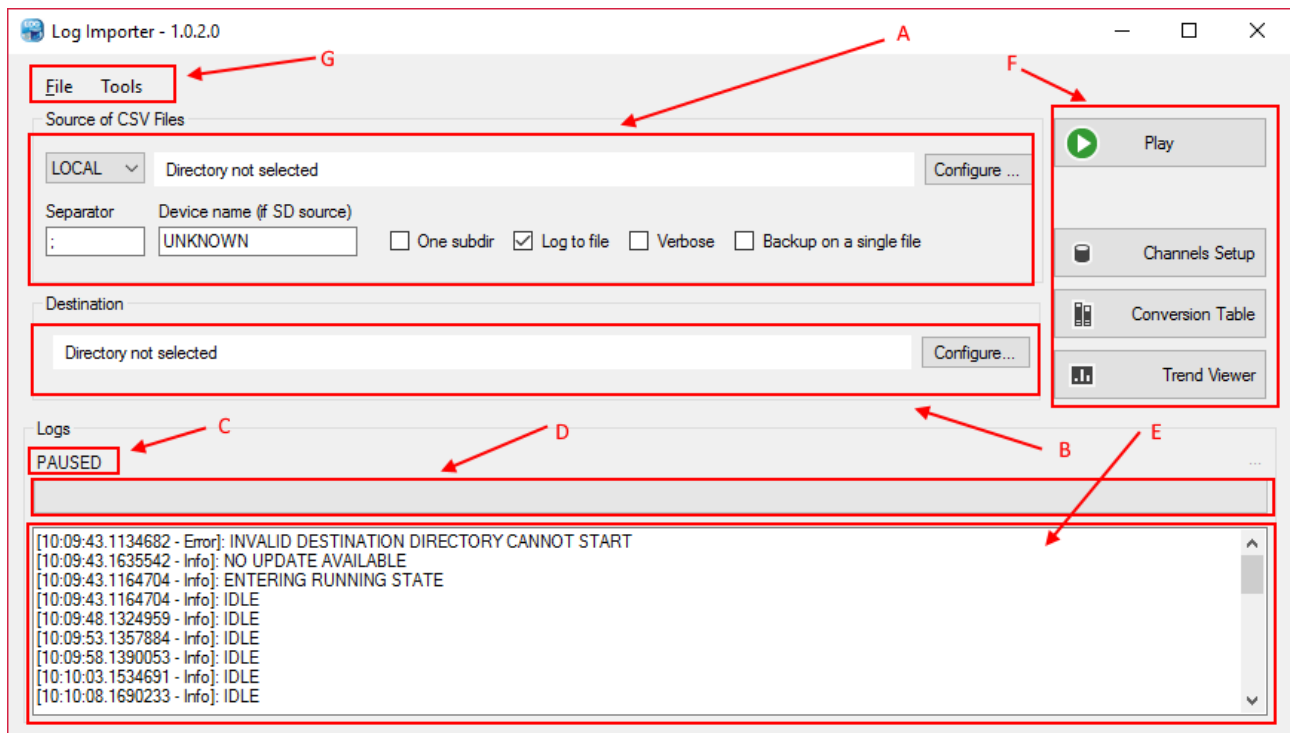
<http://www.seneca.it/en/linee-di-prodotto/comunicazione-industriale-e-telecontrollo/apparati-gsmgprs-teleallarmedatalogger/z-gprs3>

### 4. LOG FACTORY FIRST CONFIGURATION

After the installation you need to configure the Log Importer software.

Log importer is launched from seneca/log factory

In the main form we can identify some different areas:



A: Configuration of the source CSV Text data logs

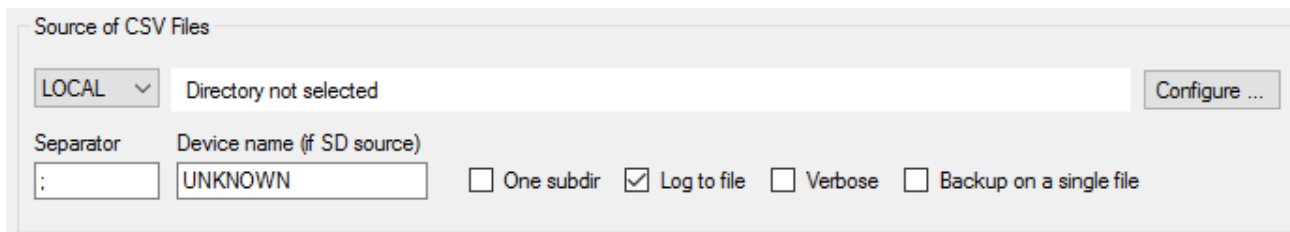
- B: Destination directory for backup logs and database files
- C: Data importer status
- D: Progress Bar
- E: Importer Log
- F: Buttons
- G: File and Tools Menu

### 4.1. File and Tools Menu

With the File menu you can save/load the log importer configuration or check for update of the software.

With the Tools menu you can Reset the Data Importer logs (area E) and launch Log importer at windows startup automatically.

### 4.2. Configuration of the source CSV Text data logs



Select if you wish to Acquire .csv text File from a LOCAL directory or a FTP server.

Device name: Must be used when you acquire csv logs from a SD card from Seneca Loggers (in this case the loggers don't write the station name because the name is in format Lxxxxxx.csv).

One subdir: If not flagged acquires csv file only from the root directory  
If flagged acquires csv file from root and from the first level directory

Log to file: Saves text log generated from the log importer to a file (not to be confused with data log from the devices)

Verbose: Add Verbose to log importer log (for debug purpose)

Backup on a single file:                If not flagged copies all files to the /bkc directory. All files will be separated by a sub directory with the acquisition date

   If flagged copies all files to the /bkc directory in one unique .csv

#### **4.2.1. Configure Log importer for Importing log data from a microSD card**

For import log data from a microSD card (for example for Z-GPRS3, Z-UMTS, Z-LOGGER3, MYALARM2 etc...) you must:

- 1) Connect the microSD to the PC with an adapter
- 2) Launch Log Importer, select the microSD source directory
- 3) Fill the “Device Name” item

Log importer automatically will move all csv files from the microSD to the /bkc directory

**Warning!**

**All files in the microSD card will be deleted (but also moved to the PC /bkc local directory).**

### **5. PLAY BUTTON: IMPORTING LOG CSV TO DATABASES**

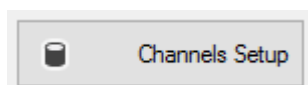
Now that Log importer is configured you can press the “PLAY” button for start the acquisition process.

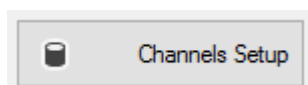
The progress bar will indicate the amount of work to be performed.

Now you can minimize the importer, as the files arrive in the source directory/ftp they will be written in the respective databases in the output folder and then erased from the source.

### **6. CONFIGURE DIGITAL OR ANALOG TAG IN THE DATABASE**

When Data arrives from the csv text files the TAG data type is unknown so, if you want to chart in different way the analog from the digital tag you must edit the database.



For to do that click on  then select the database to edit.

For example a typical database from a Z-LOGGER3 device is:



Traces settings

Name	Description	isDigital	UdM	Beginning Scale	End Scale	Sampling Time
POW		0		0	10000	60
VBAT		0		0	10000	60
DIN1		0		0	10000	60
DIN2		0		0	10000	60
DIN3		0		0	10000	60
DIN4		0		0	10000	60
DOUT1		0		0	10000	60
DOUT2		0		0	10000	60
VAL1		0		0	10000	60
AVG1		0		0	10000	60
MIN1		0		0	10000	60
MAX1		0		0	10000	60
VAL2		0		0	10000	60
AVG2		0		0	10000	60
MIN2		0		0	10000	60
MAX2		0		0	10000	60
WRK1		0		0	10000	60
TOT1		0		0	10000	60
CNT1		0		0	10000	60
DELTA1		0		0	10000	60
WRK2		0		0	10000	60

Apply Cancel

We know that the tags from “POW” to “DOUT2” are digital so we put isDigital =1 on all the tags:

Traces settings

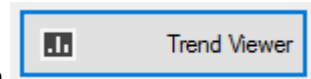
Name	Description	isDigital	UdM	Beginning Scale	End Scale	Sampling Time
POW		1		0	10000	60
VBAT		1		0	10000	60
DIN1		1		0	10000	60
DIN2		1		0	10000	60
DIN3		1		0	10000	60
DIN4		1		0	10000	60
DOUT1		1		0	10000	60
DOUT2		1		0	10000	60
VAL1		0		0	10000	60
AVG1		0		0	10000	60
MIN1		0		0	10000	60
MAX1		0		0	10000	60
VAL2		0		0	10000	60
AVG2		0		0	10000	60
MIN2		0		0	10000	60
MAX2		0		0	10000	60
WRK1		0		0	10000	60
TOT1		0		0	10000	60
CNT1		0		0	10000	60
DELTA1		0		0	10000	60
WRK2		0		0	10000	60

Apply Cancel

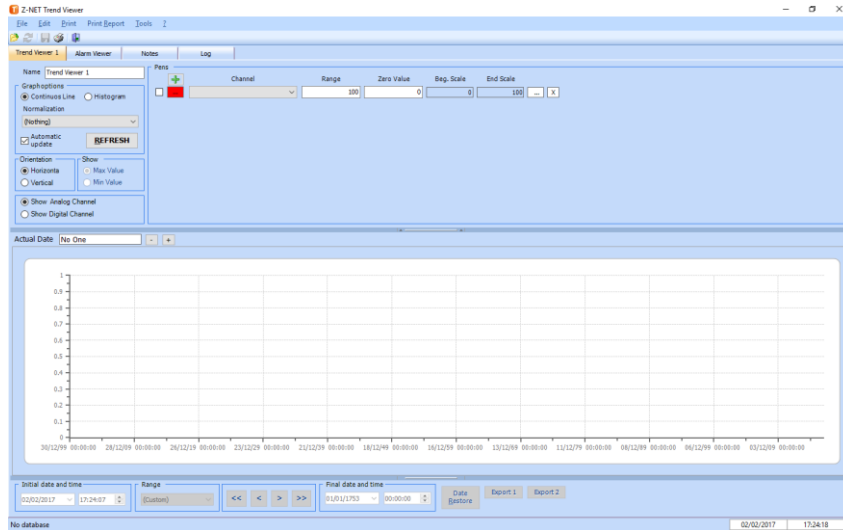
Then click on “Apply”.

All others tags will be viewed like Analog Tags.

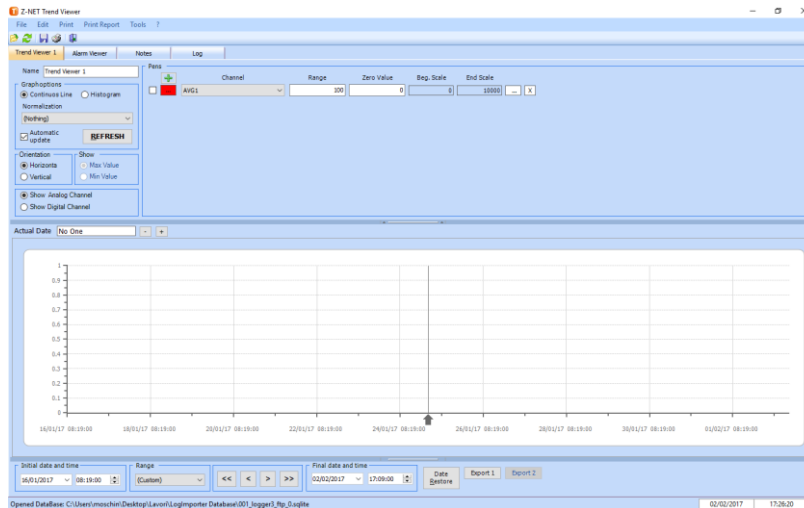
## 7. OPEN AND ANALYZE THE DATABASE IN TREND VIEWER



Now we are ready to open the database in trend viewer, for to do that click on button:

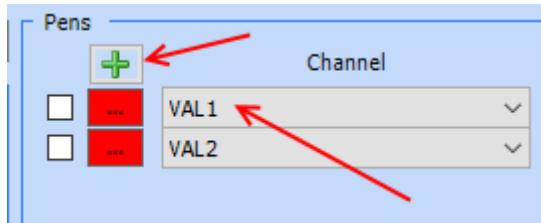


Now click on File -> Open and select the database that you want to analyze:

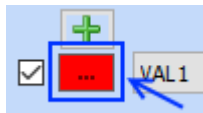
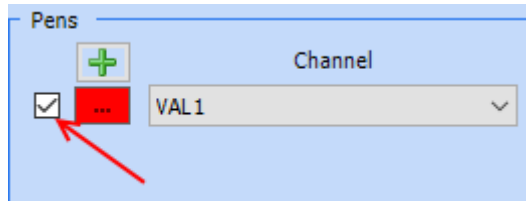


Now you need to select which tag to add:

Use the “+” icon to add a tag then select it from the list (in alphabetical order):



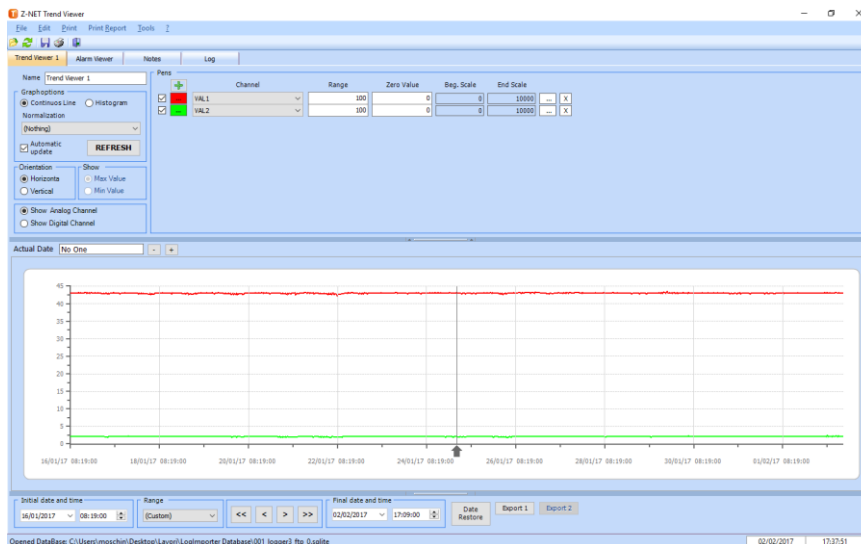
Now you need to activate the channels:



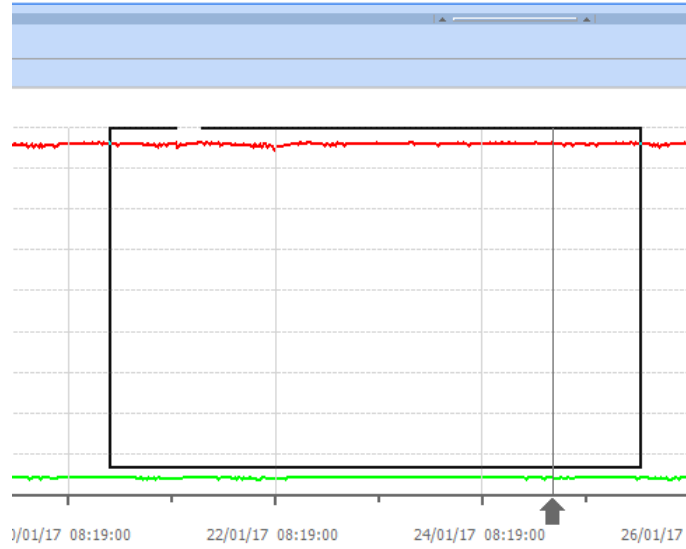
You can change the color of the pen by clicking on the ... icon.



Now click on refresh icon the selected tags are charted:



Now you can zoom IN/OUT for analyze the trend by creating a box with the mouse:



Date Restore

To perform a Zoom out and return to the original view press the right mouse button or click on button.

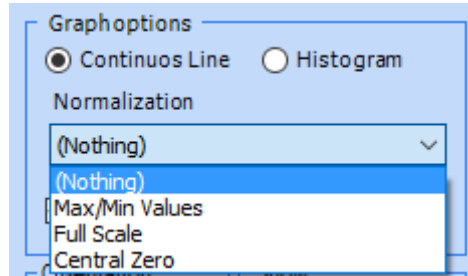
For view digital tags you must select “show digital channels”:

Channel	Range	Zero Value	Beg. Scale	End Scale
DIN1	100	0	0	10000
DIN2	100	0	0	10000
DIN3	100	0	0	10000

It's possible to show also data in Histogram mode (for example the totalizer tags).

## 7.1. Graph normalization

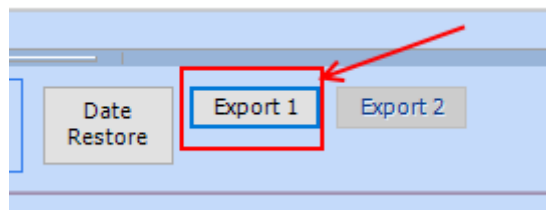
In Trend viewer a chart can be normalized in this way:



- Nothing : No normalization, the trend is centered
- Max/Min Values: The max value (100%) is the upper limit of the chart, the min value (0%) is the chart lower limit.
- Full scale: The max value is the full scale variable value
- Central Zero: The trend is centered with lower limit = higher limit \* (-1)

## 8. EXPORT TREND DATA TO CSV

With Trend viewer you can select an area in the graph and then export the selected data to a .csv file by clicking on “Export 1” button.



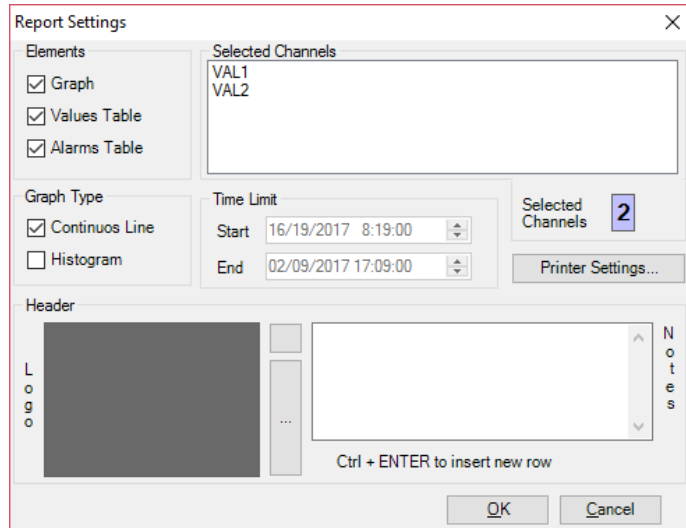
### **Warning!**

***The csv file exported is to be used with an external tools, the file can not be imported with Log Factory.***

## 9. PRINT REPORT

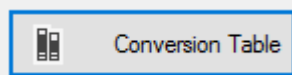
When a Trend is visualized on the screen you can print to a printer/PDF with the menu -> Print report.

In Report Setting you can upload a logo and select wich channels to print:



## 10. LOG IMPORTER CONVERSION TABLE

Log importer can be configured for manage text string into the csv files. For todo that click on button:



Token value convert table

Token String	String Value
PIN?!	-130
PUK?!	-130
DENY!!	-130
UNKNOW	-130
ERR!!	0
EXC01	0
EXC02	0
EXC03	0
FAIL	0
NOANSW	0
UNDEF	0

OK Cancel

In this table you can see that a Modbus communication error (NOANSW) for example is converter to a value of "0".

If you need to change these values (for example you can set NOANSW to 9999999999 so in trend viewer you'll see the communication error with an out of scale value) you can change the default table value.