

---

# FileZilla FTP server installation for Windows™ OS

---

## Summary

1	Required software.....	1
2	Preparation .....	1
2.1	Wizard Installation .....	2
2.2	Set your internal network (LAN) .....	3
2.3	Access to the server from Internet (WAN) .....	6
3	Users creation and administration .....	7
4	TERMS AND CONDITIONS OF USE .....	11

Date	Version	Note	Author
13/05/2015	1	First release	A.Cappellozza
16/02/2016	2	Second release ITA-ENG	R.Lubertino

## 1 Required software

Filezilla FTP server is a compatible software with Windows 7/8/8.1 both 32 and 64-bit. All these OSs versions are desktop operating systems and would not properly fit to act as a server because Microsoft limits the maximum concurrent connections to the PC up to a small number of units. This configuration, therefore, is not recommended in the case of many simultaneous accesses. SENECA recommends changing to enterprise hosting solutions that provide this service.

## 2 Preparation

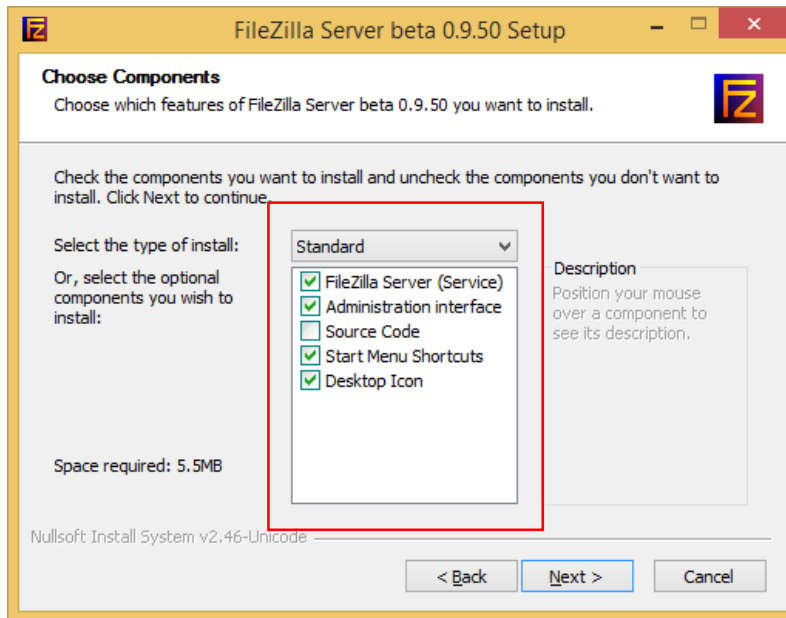
The software can be downloaded from the official website at the following address:

<https://filezilla-project.org/download.php?type=server>

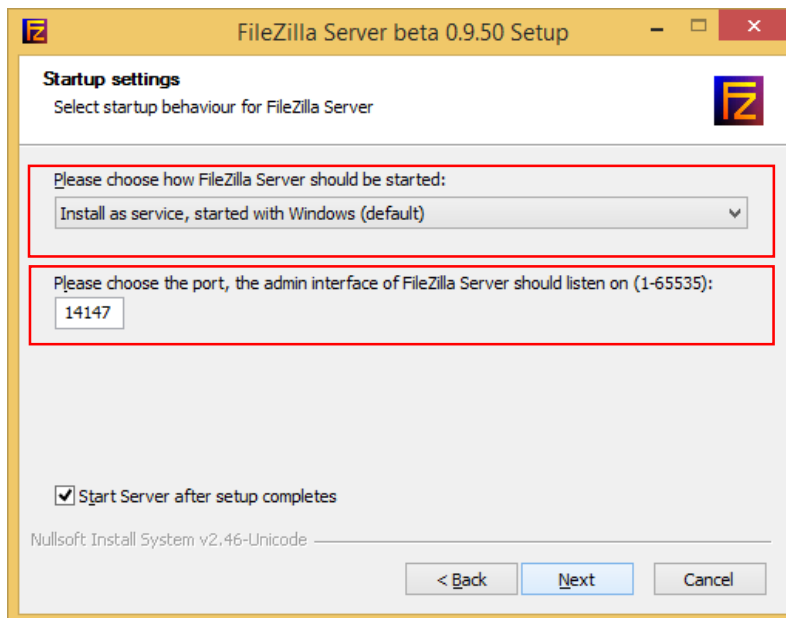
Once you have reached the link, click on "**Show additional download options**" and select the latest installer version for your Windows OS. You will be redirected to sourceforge page (which hosts the project) and wait until the download starts.

### 2.1 Wizard Installation

One of the essential steps is to select the right components for the installation and the standard installation will be fine in our case.



This step is very important and defines the FileZilla server boot function during OS boot. If you want to set-up a ftp server always on, receiving continuous data, set the options as shown below.



With this configuration FileZilla service will start with the operating system and there will be no need to login. If you don't want an ftp server always on you can choose a different configuration from the first button. The installer will propose a different port from ftp standard (21) but the Administration Console. You could leave it as it is.

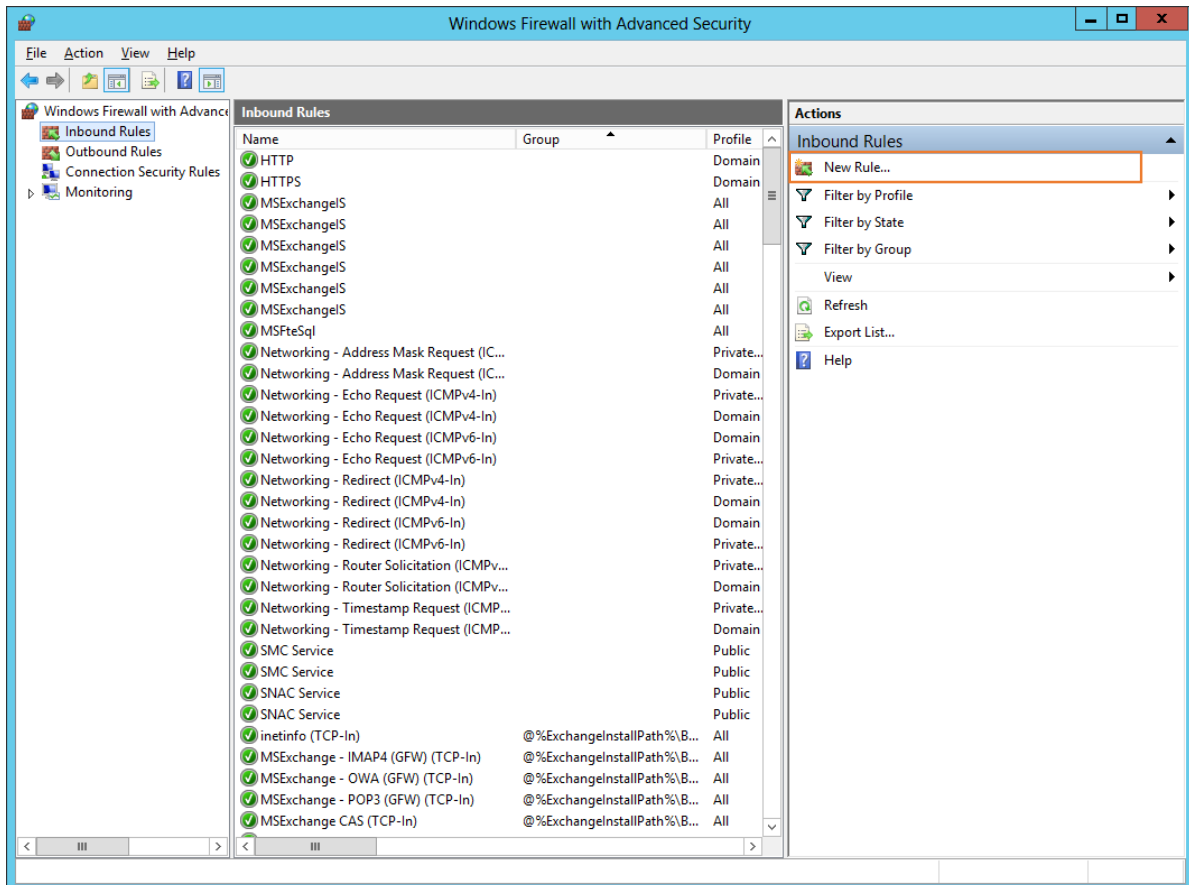
### 2.2 Set your internal network (LAN)

It's very important to make sure that your machine will allow incoming connections. According to this you need to check that there are no programs that block this functionality like i.e. antivirus. We can't specify the procedure for all types of software, you should check the guide or contact your software supplier to find out how to create an exception on the filter controls line. If you have a standard situation (Windows Firewall) you can add inbound and outbound rules like in we're going to describe.

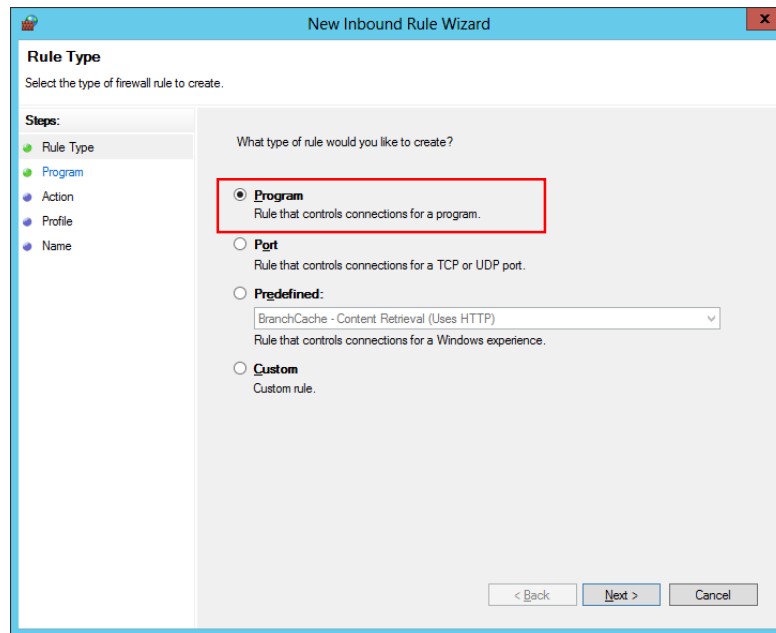
*ATTENTION: The procedure may vary depending on the Windows version, this is valid for Windows 8.1.*

Open "Control Panel" and look for "Windows firewall", click Advanced Settings on the left side menu, you will open a panel like the one in the picture. The section that interests us is on the left tree.

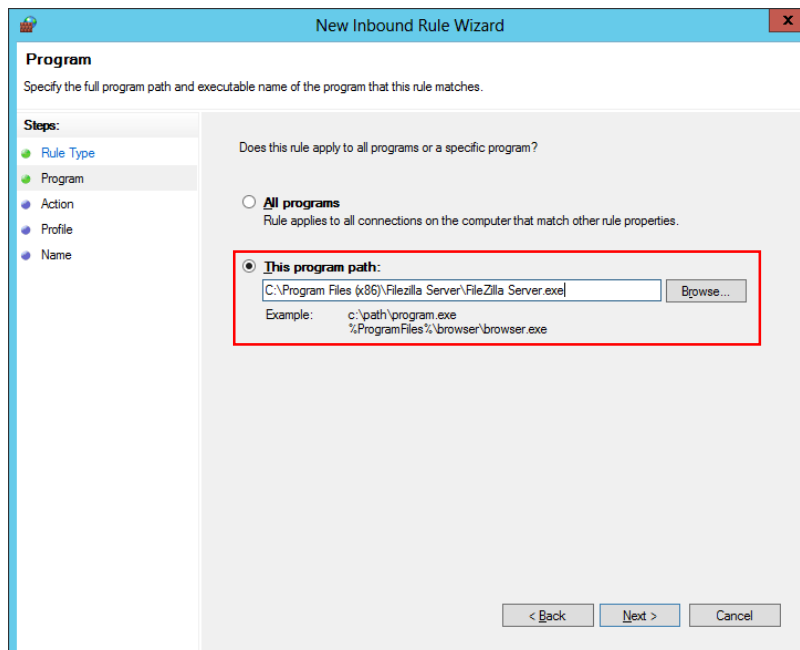
#### A. Please select "Inbound Rules"



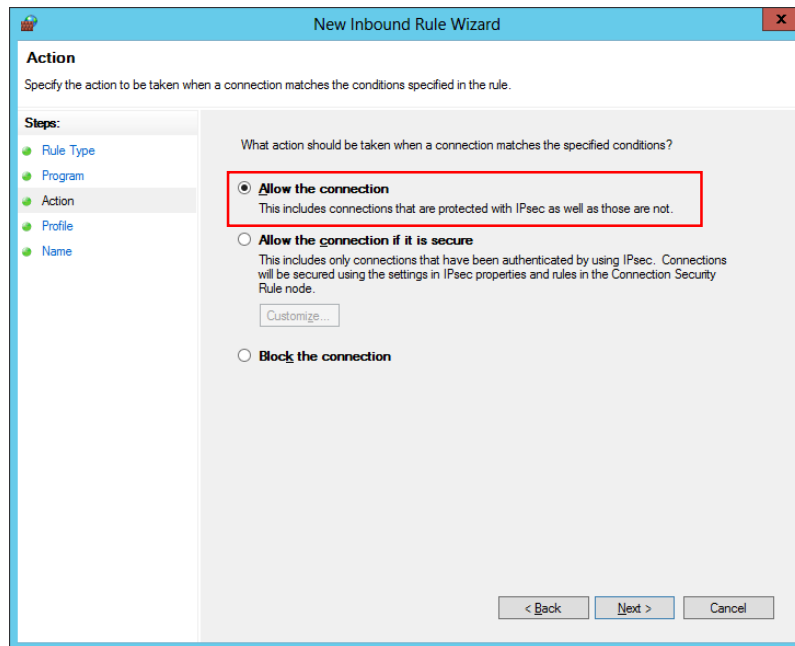
#### B. Select "New rule .." and it will open a wizard that will guide us in creating the filter.



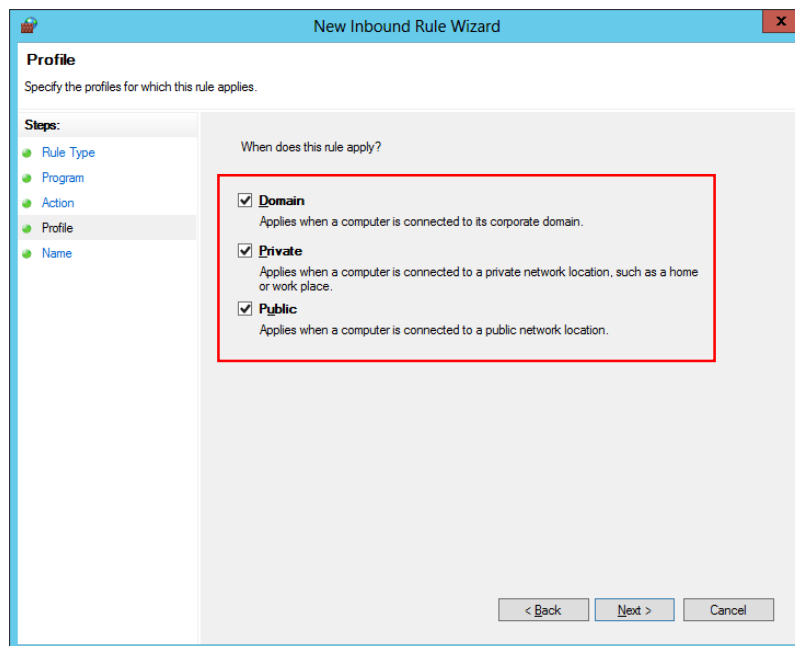
C. and select "Program".



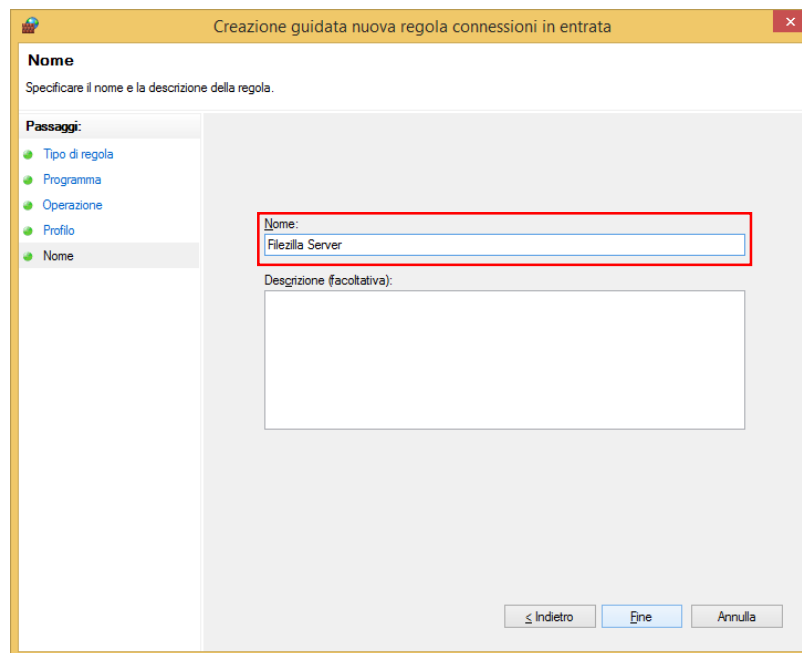
D. Select the Filezilla Server executable (is commonly in "**C:\Program Files (x86)\FileZilla Server\FileZillaServer.exe**"). If you changed the installation folder during installation the path must be changed.



E. It should be set like “Allow the connection” allowing all ports connections to FileZilla.



F. Check all application types that the system offers. The figure above shows the standard ones.



- G. After this you have to give a label to the rule. Set which is preferred.
- H. Once you have created the “**Inbound rule**” you can proceed with the “**Outbound rule**” starting from the step named **A.** but choosing “Outbound rule”. In case of problems, you can start troubleshooting disabling the firewall.

## 2.3 Access to the server from Internet (WAN)

What has been done until now is sufficient for in-LAN use of the FTP server. If you want to reach the FTP server from internet we will have to modify modem/router settings. All the instructions are general information so please check these details with your network administrator.

In order to reach the FTP server through internet via 2G/3G+/Ethernet devices, FTP server must be visible from the Internet: this argument implies a series of important considerations concerning the security of data, so we strongly suggest you to set strong passwords. It is necessary to set minimum password 8 characters, uppercase, lowercase, numbers and special characters, and then verify it, for example, here:

<https://www.microsoft.com/es-xl/security/pc-security/password-checker.aspx>

*ATTENTION: strong password, with keeping the updated software (operating system, FileZilla FTP server etc.) are only the first step to have a minimum level of security.*

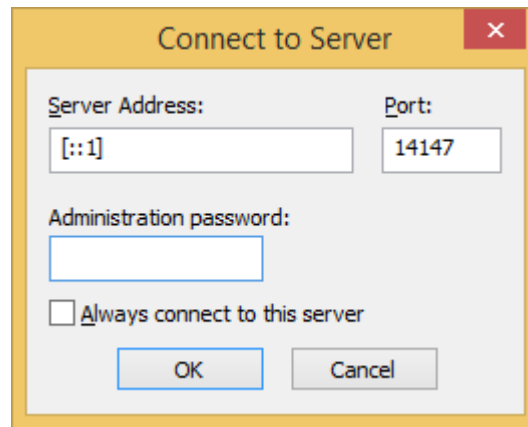
Using a browser, you have to access to the modem/router webserver and look for a section called "virtual server" or "port forwarding" (in this regard refer to the modem manual or consult your IT support). What we need to do is to ensure that the specific incoming requests from the Internet have to be forwarded from the router to your computer.

Once you found the section above set port 21 and the address/port which has to be forwarded to (ip of the computer with FileZilla FTP server installed and the port defined in **2.2 paragraph**).

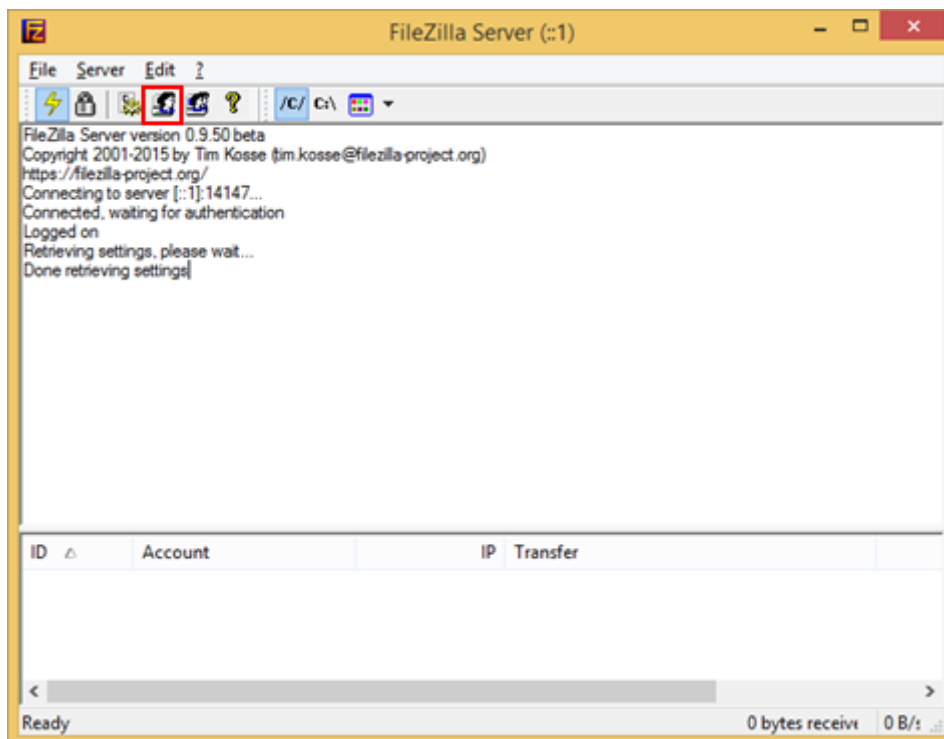
**With this configuration you have to choose ONLY the active method for the FTP connection.**

### 3 Users creation and administration

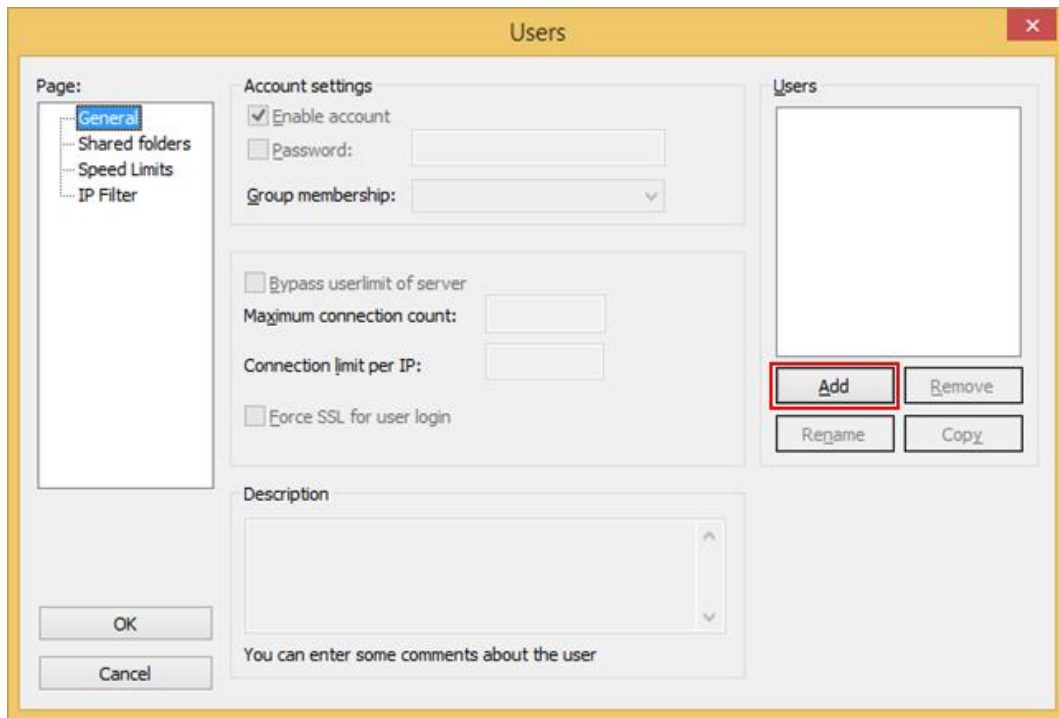
From programs menu please select Filezilla Server administration interface and perform the login. If you have not changed settings can be accessed without a password.



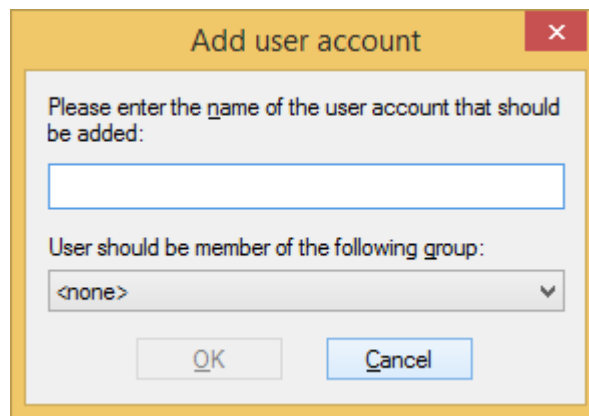
The server address is 127.0.0.1 (IPV4) or [:: 1] in the case of machines that enabled the IPV6.



Console shows the server status, if you have connection problems you will see error messages, check the cause of the problem based on the error reported. In the top bar there are toolbar icons for FileZilla FTP server administration. Press the button shown in the figure and proceed with users configuration.

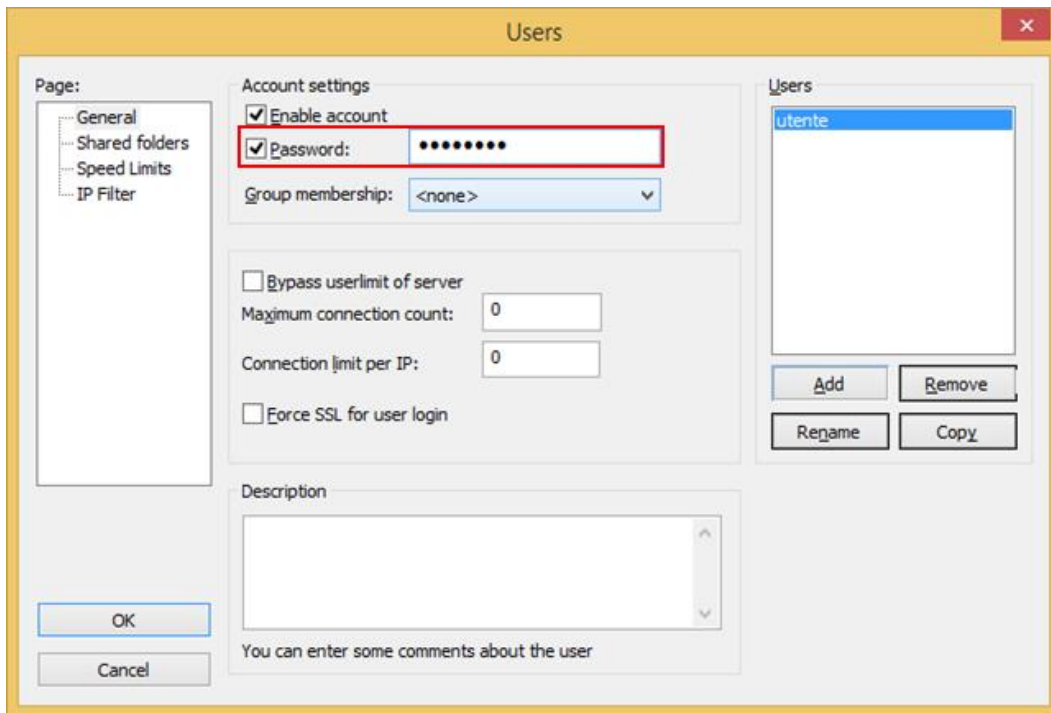


Press "Add" to create a new user. This will open a definition screen name.

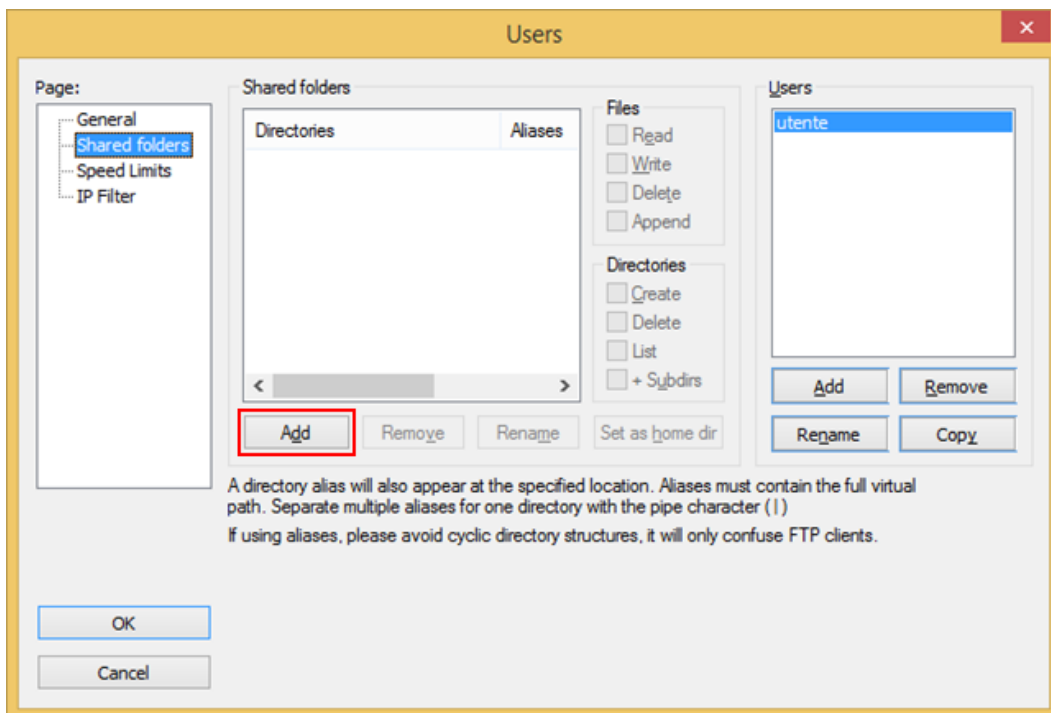


Please leave the group as it is. Advanced details will not be specified in this guide.

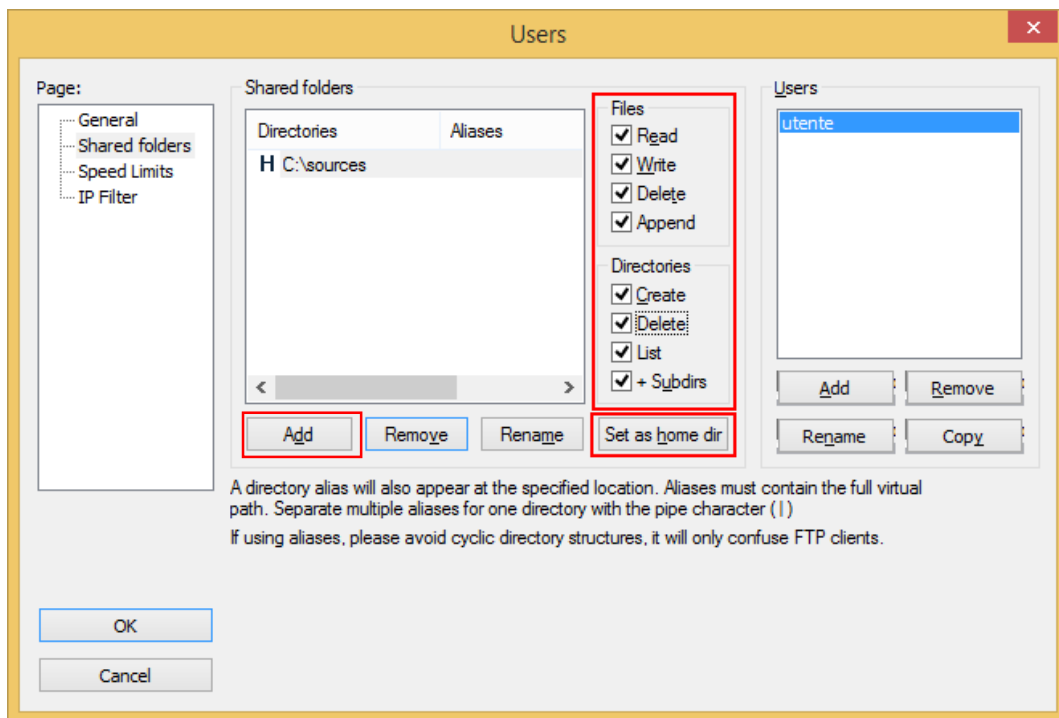




Once the user is created you must assign a password. Check password and enter it in the box as shown in the next figure.



At this point, the user needs an home directory, this is the folder that the user will see just logged in with its FTP client. In the left section, navigate the **"Shared Folders"** menu.



Select a folder, we suggest you to create a folder **not** linked to a specific user (neither desktop folder or user document folder). For example, create a folder in the local drive like **C:\ftp\_server**.

Permissions have to be set on files/folders. For standard applications please select all; this will mean that you will do everything in his home. Then press "Set as home dir" to mark that folder as user home directory. Once you select OK the configuration will be operational and you can start working.

## 4 TERMS AND CONDITIONS OF USE

---

This is a license agreement between you (either an individual or an entity) and SENECA srl for this guide.

### IMPORTANT - READ CAREFULLY:

By installing, copying or otherwise using the guide, you agree to be bound by the terms of this Agreement. If you don't agree to comply with the conditions of this Agreement, you must not install or use the guide.

#### 1) PROPERTY

The guide is the exclusive property of SENECA srl

#### 2) USER LICENSE

You can use the guide to communicate with SENECA devices.

#### 3) LIMITATIONS

You can't sell the guide, sublicense, transfer it or make it available in any other way to third parties either for free or for consideration. The user has not to reproduce, modify, translate programs or otherwise attempt to discover the source code of the software, even partially; also can not be copied or translated, even partially, the manuals provided to define and describe the specific software.

#### 4) WARRANTY

SENECA AND ITS SUPPLIERS WON'T BE LIABLE FOR ANY DATA LOSS REVENUE OR PROFITS, OR CAUSES FOR INDIRECT, CONSEQUENTIAL OR INCIDENTAL DAMAGES, FOR CAUSES (INCLUDING NEGLIGENCE), ARISING OUT OF OR RELATED TO USE OR INABILITY TO USE THE GUIDE EVEN IF ADVISED OF SENECA POSSIBILITY OF SUCH DAMAGES.

SENECA, ITS SUBSIDIARIES AND AFFILIATES GROUP COMPANIES DISTRIBUTORS AND DEALERS, DON'T WARRANT THAT THE FUNCTIONS CONTAINED IN THE GUIDE WILL MEET YOUR REQUIREMENTS AND THAT THE SOFTWARE IS ERROR-FREE OR THAT FUNCTIONS WILL BE UNINTERRUPTED.

#### 5) GENERAL CONDITIONS

These Terms and Conditions may not be modified, deleted or altered, in whole or in part, without a written request. SENECA srl reserves the right to change the features and characteristics of the Software without notice.

**Copyright (c) 2009-2016 SENECA srl**

**All rights reserved**

**SENECA S.r.l. - Via Austria 26 – 35127 Padova (PD) - ITALY**

**Site: <http://www.SENECA.it>**