



SEAL QUICK GUIDE

FOR SENECA RTU

Z-GPRS3

Z-UMTS

Z-LOGGER3

SENECA s.r.l.

Via Austria 26, PADOVA – ITALY

Tel. +39.049.8705355 – 8705359 Fax. +39.049.8706287

Website: www.seneca.it

Customer service: supporto@seneca.it (IT), support@seneca.it (Other)

Commercial information: commerciale@seneca.it (IT), sales@seneca.it (Other)



This document is the property of SENECA srl. Even partial duplication and reproduction are forbidden, if not authorized. The content of the present documentation refers to products and technologies described in it. Though we strive to reach perfection continually, all technical data contained in this document may be modified or added due to technical and commercial needs; it is impossible to eliminate mismatches and discordances completely. The content of this documentation is anyhow subjected to periodical revision. If you have any questions do not hesitate to contact our company or write to the above-mentioned email addresses.

MI004474-E

Date	Version	Changes
29/06/2016	1.00	First revision
22/07/2016	1.02	Added chapter on the use of audio alarms
02/08/2016	1.03	Added chapter on the use of the address book and groups to send alarms to
14/12/2016	1.04	Added support to Z-UMTS and Z-LOGGER3 RTUs Deleted chapters and added in the Application Note section

1. PRELIMINARY INFORMATION ON SEAL	5
1.1. EVENTS - LOGIC - ACTIONS	5
1.2. EVENTS	6
1.3. LOGIC	7
1.3.1. SEC: SIMPLE EVENT CONTROL	8
1.4. ACTIONS.....	10
2. MAKING AND PROGRAMMING THE FIRST SEAL PROJECT	11
3. WEB SERVER AND MODBUS TCP-IP SERVER SERVICES	19
3.1. ENABLING THE WEB SERVER AND THE TCP-IP SERVER	19
3.2. REMOTE ACCESS TO THE WEB SERVER AND MODBUS TCP-IP SERVER.....	20
3.2.1. CLASSIC SIM WITH DATA SERVICE	21
3.2.2. CLASSICAL SIM WITH DATA SERVICE AND INCOMING PORTS OPEN	21
3.2.3. SIM WITH PRIVATE APN	22

ATTENTION!

Contact your telephone provider for information on GSM and GPRS service costs. It is best to quantify log and SMS costs before setting up and installing Z-GPRS3, Z-UMTS, Z-LOGGER3.

The use of Z-GPRS3 and Z-UMTS in data roaming mode (for example, abroad with an Italian SIM card) may generate unexpected costs. Contact your telephone provider for further information.

IN NO CASE MAY SENECA OR ITS SUPPLIERS BE HELD LIABLE FOR ANY LOSS OF DATA, INCOME OR PROFIT DUE TO INDIRECT, CONSEQUENTIAL OR INCIDENTAL CAUSES (INCLUDING NEGLIGENCE) DERIVING FROM OR CONNECTED WITH THE USE OR INABILITY TO USE Z-GPRS3, Z-UMTS AND Z-LOGGER3, EVEN IF SENECA WAS INFORMED ABOUT THESE POSSIBLE DAMAGES.

SENECA, ITS SUBSIDIARIES OR AFFILIATES OR GROUP PARTNERS OR DISTRIBUTORS AND SENECA DEALERS DO NOT GUARANTEE THAT THE FUNCTIONS FAITHFULLY MEET THE EXPECTATIONS AND THAT Z-GPRS3, Z-UMTS AND Z-LOGGER3, ITS FIRMWARE AND SOFTWARE ARE FREE FROM ERRORS OR WORK UNINTERRUPTEDLY.

SENECA HAS TAKEN THE UTMOST CARE AND CAUTION IN DRAFTING THIS MANUAL. HOWEVER, IT MAY CONTAIN ERRORS OR OMISSIONS. SENECA SRL RESERVES THE RIGHT TO MODIFY AND/OR VARY PARTS OF THIS MANUAL TO CORRECT ERRORS OR TO ADJUST TO PRODUCT FEATURE CHANGES WITHOUT ANY PRIOR NOTICE.

ATTENTION!

-Contact your telephone service provider for GSM and GPRS service costs especially when using Z-GPRS3 or Z-UMTS with a sim card issued by a country other than the one in which it is used (international roaming).

-It is best to estimate telephone costs before setting up Z-GPRS3 and Z-UMTS.

-The cost of each SMS is set by the telephone service provider.

-GPRS send/receive costs can be tied to Kbytes sent/received, a monthly ceiling included in a package or GPRS connection time. Contact your telephone service provider for further information.

-Check the data quantity sent via GPRS and SMS before using Z-GPRS3 and Z-UMTS.

Please remember that mobile phone service providers consider the entire communication that permits file transmission as data traffic (and therefore data transmission overhead, the number of connection attempts, etc. must also be included in the count) and not just the dimensions of each 2G/3G transaction.

1. PRELIMINARY INFORMATION ON SEAL

This manual wishes to introduce you to SEAL programming for Seneca RTUs.

Further information about SEAL can be found in the SEAL online help; further information on Z-GPRS, Z-UMTS and Z-LOGGER3 can be found in the user manual.

Each function Block has a help key leading straight to the explanation of the block:

The screenshot shows the SEAL software interface. On the left is a tree view of the project structure. The main window displays the configuration for a 'Control Block SEC: Simple Event Logic Control'. Below this, a 'SEC1 Event Control' dialog box is open, showing configuration options for 'Simple Event Control' (Input Logic: AND, Send: SMS, To Profile: Operator) and 'Block Info' (Block Function Description: SIMPLE, EVENT]. A red circle highlights a help key icon (a question mark in a square) in the bottom-left corner of the dialog box, with a red arrow pointing to it.

1.6.8.1. Control Block SEC: Simple Event Logic Control

Input Event 1
Input Event 2
Input Event 3
Input Event 4

SEC1
SIMPLE
EVENT

Output
Output

This block is a simplified logic state-machine for the SEAL program. Up to 32 Event Control blocks can be configured in the Graph Panel.

SEC1 Event Control

SEC1

Simple Event Control

Input Logic: AND

Send: SMS

To Profile: Operator

Block Info

Block Function Description: SIMPLE, EVENT]

APPLY CANCEL

- **Input Logic:** up to 4 input events can be configured in AND/OR Logic

1.1. EVENTS - LOGIC - ACTIONS

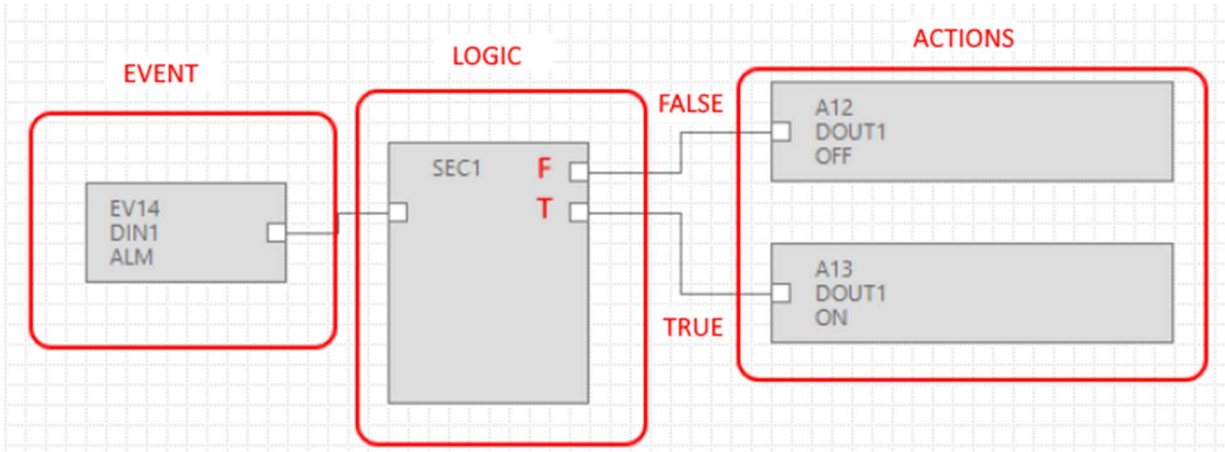
SEAL (SEneca Advanced Language) is a configuration and programming software for Seneca RTUs.

SEAL allows making simple programs using an approach such as:

EVENTS -> LOGIC -> ACTIONS

Events, Logic and Actions are called **function blocks** that are interconnected among themselves with threads, creating **chains**.

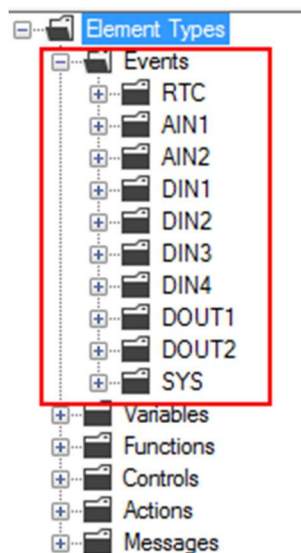
A chain example is for instance:



Event DIN1 ALM (alarm on digital input 1) is connected to the SEC (Simple Event Control) control logic, if the event is false (and therefore there is no alarm), the "FALSE" action is carried out (the output to relay 1 is not energized); if the event is true (and therefore the alarm is active), the "TRUE" action is carried out (the output to relay 1 is energized):

1.2. EVENTS

In SEAL **Events** can be found in the **Events** folder:

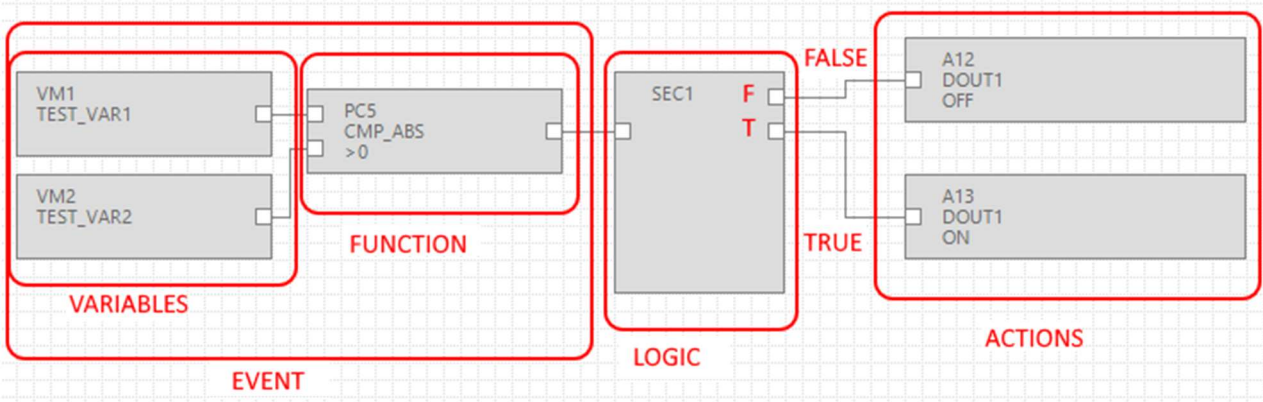


Events include: Alarms on analogue (AIN) and digital (DIN) inputs, etc...



An event can only be boolean (digital), so it can be either true or false.

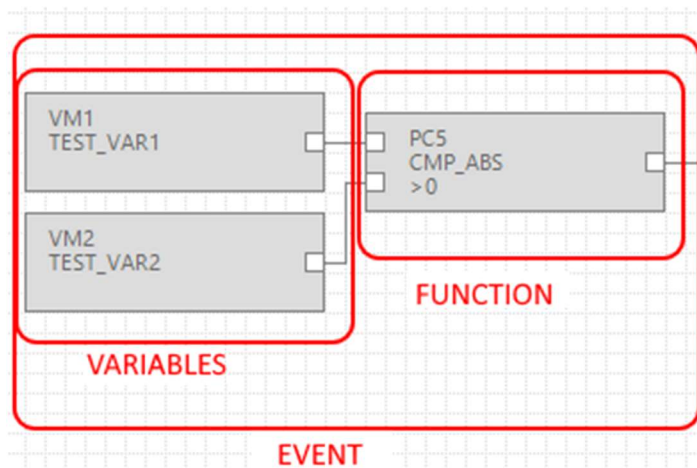
Apart from predefined events, it is possible to join a **variable** with a **function** generating a new **event**.

In this example, two modbus variables have been defined, "Test_VAR1" and "Test_VAR2", if "TEST_VAR1" > "TEST_VAR2" the "TRUE" action is performed and the output to relay 1 is energized, otherwise the "FALSE" action is performed and the output to relay 1 is deenergized.



Therefore the variables connected with a function form an **event**.

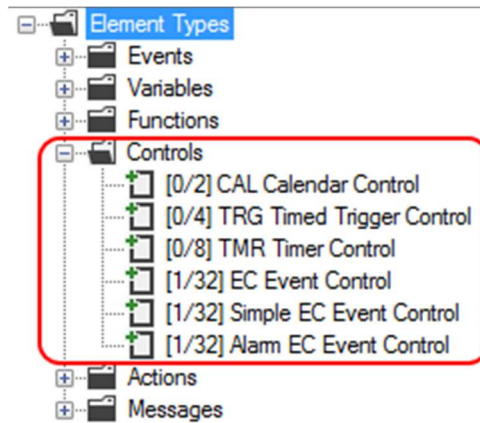
 Variables
 Functions = EVENTS



1.3. LOGIC

The logic allows selecting which actions must be performed if the event is true or false.

The function blocks that execute the logic are in the "Controls" folder:



The number in square brackets [xx/yy] has the following meaning:

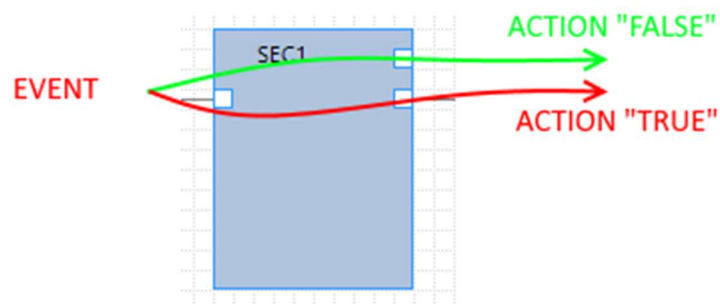
xx = Number of function blocks of the stated type used in the current project

yy = Maximum number of usable function blocks of the type stated

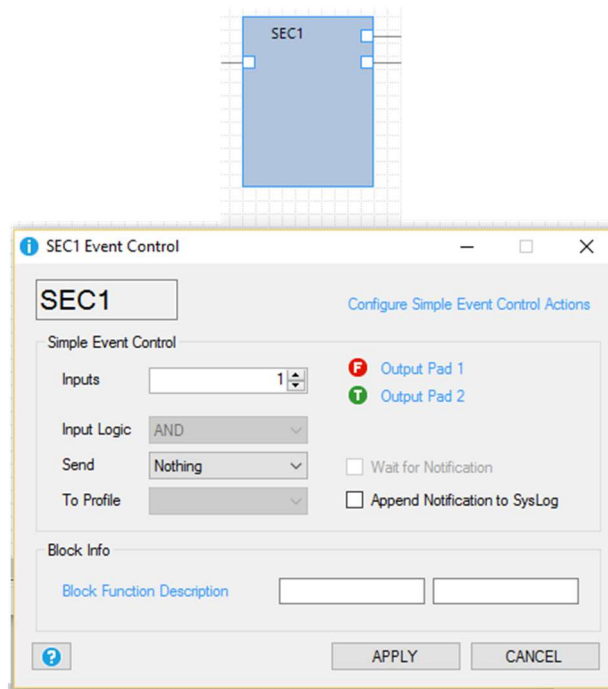
1.3.1. SEC: SIMPLE EVENT CONTROL

The most useful function block is SEC (Simple EC Event Control), and, as you can see, a maximum of 32 SECs can be used.

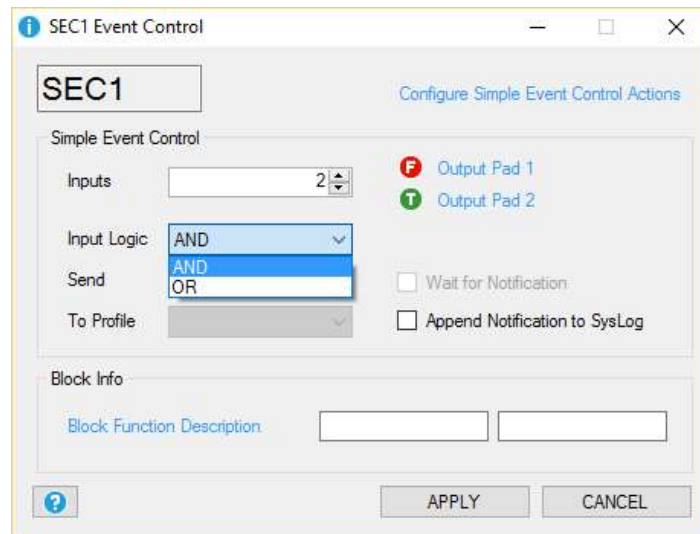
SEC separates "False" and "True" events:



Double-clicking on the function block, the settings of Simple Event Control are displayed:

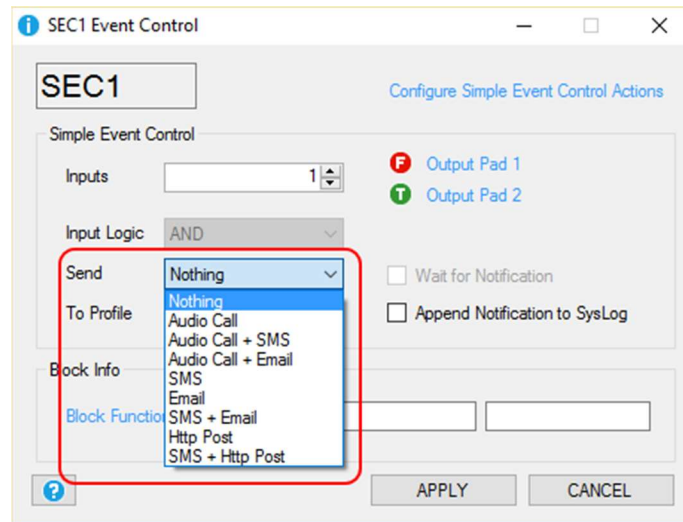


SEC can process from 1 to 4 inputs, if > 1 it is possible to choose the input logic:



That is input events must all be true (AND) or just one (OR) must be.

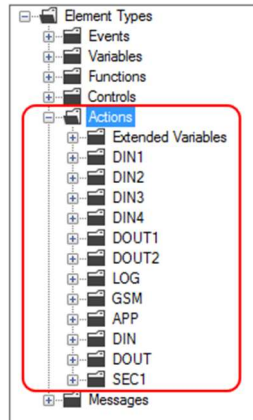
It is possible to associate sending text messages or audio calls with "Send":



If you want events to be displayed *in the event logger*, flag the "Appen Notification to Syslog" checkbox.

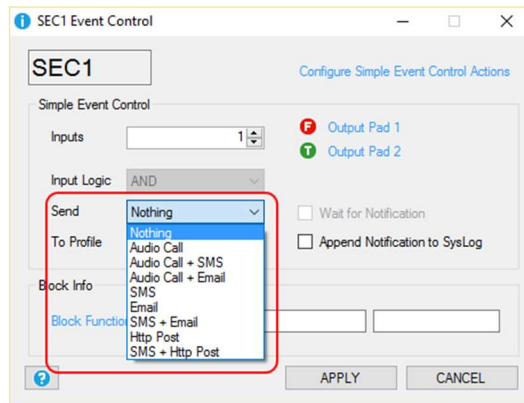
1.4. ACTIONS

Actions are available in SEAL in the Actions folder:



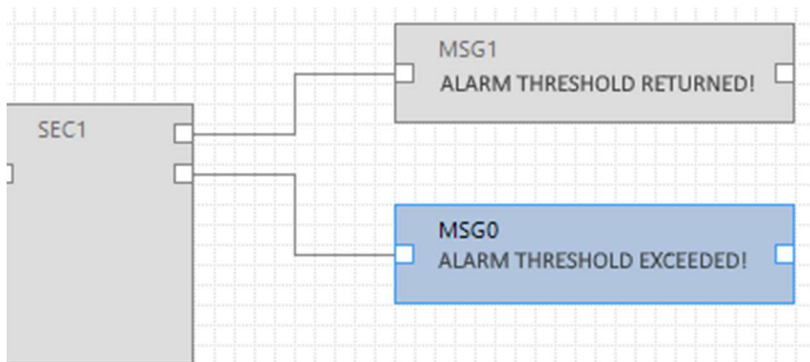
Actions are available on meters, digital outputs, logs, etc.

Sending a text message (or an audio call) is considered a particular action and must be managed through Messages and the configuration of the logic block:

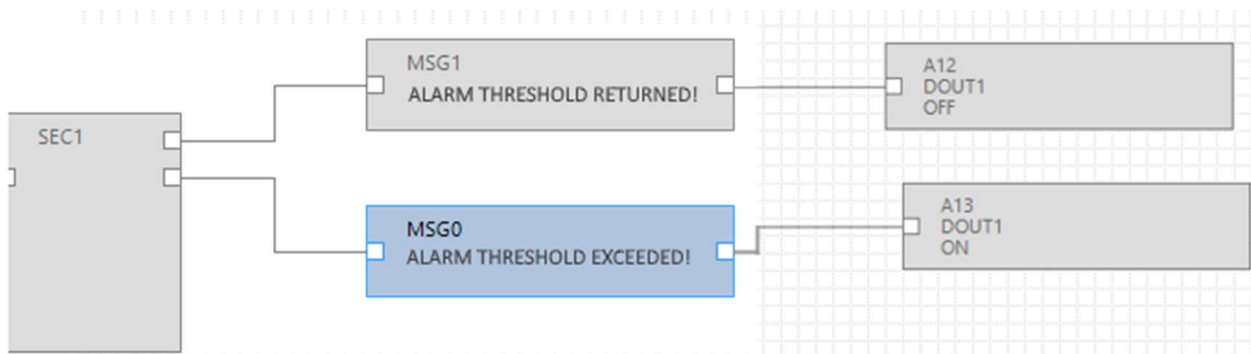


Messages can in turn be connected to the real action (that can be there or not).

For instance, it is possible to send an SMS if a threshold is exceeded on analogue 1, doing it this way:



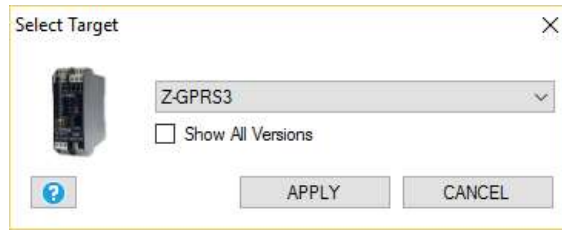
It is also possible to follow the messages with the command of digital output1:




2. COMPILING AND PROGRAMMING THE FIRST SEAL PROJECT

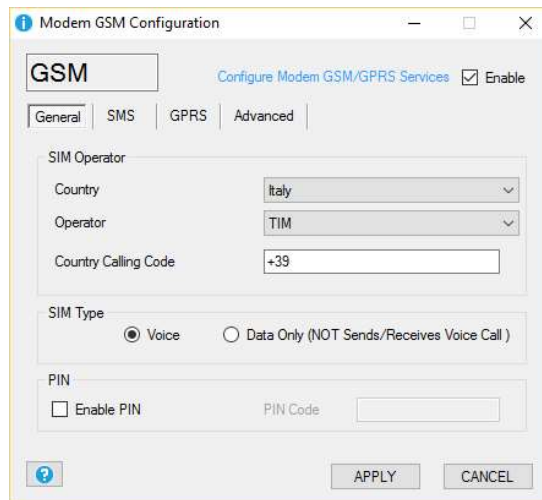
As an example, make a simple project for Z-GPRS3 step by step whose purpose is sending an alarm SMS if there is a change of status of digital input 1 (DIN1).


First of all, configure the target by choosing for example "Z-GPRS3":



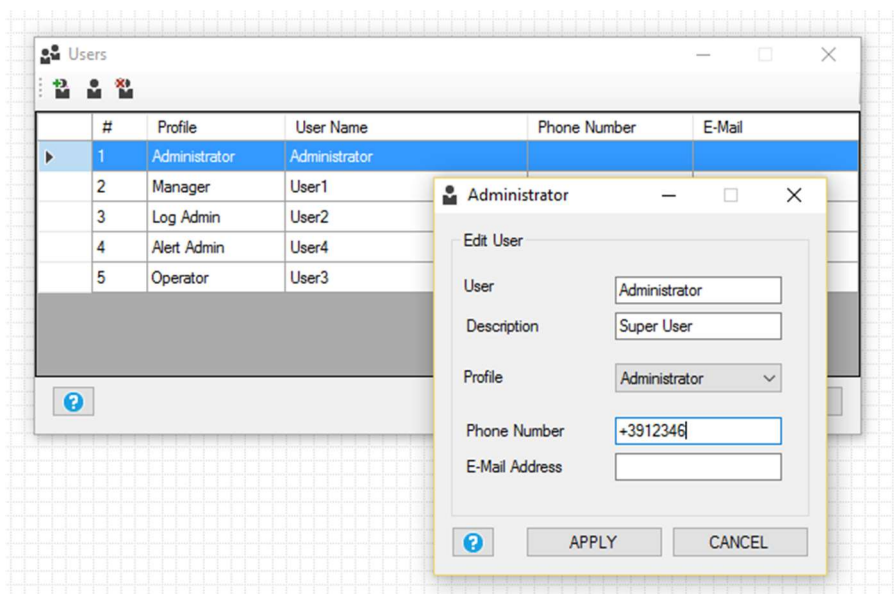
Go to the configuration of the SIM card that will send the alarm SMSs by clicking on icon .

Now select the parameters of your service provider:



Add the telephone number to send the SMSs to, to the address book, clicking on icon .

Double click on "Administrator" and enter the number +3912346:

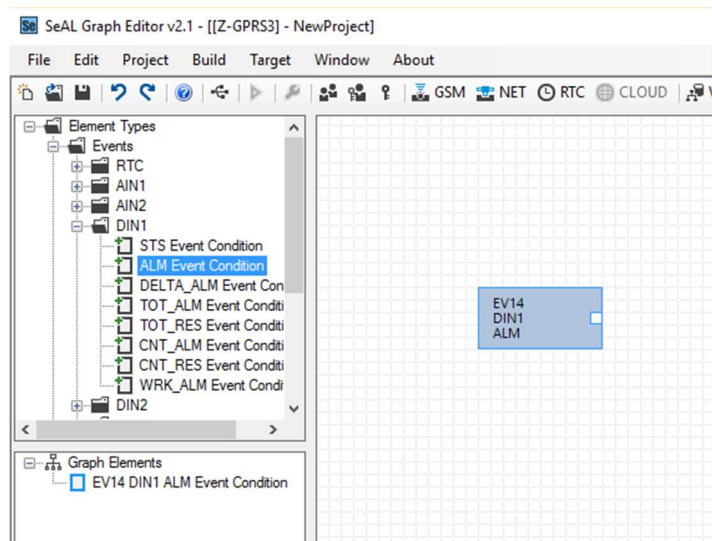


#	Profile	User Name	Phone Number	E-Mail
1	Administrator	Administrator	+3912346	
2	Manager	User1		
3	Log Admin	User2		
4	Alert Admin	User4		
5	Operator	User3		

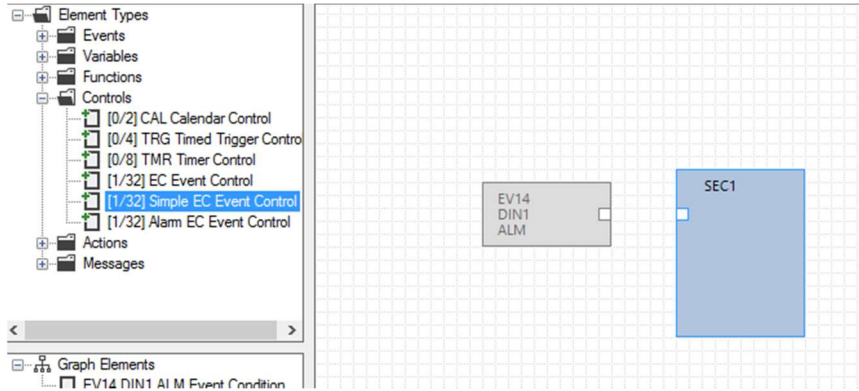
The configuration is now complete.

Now it is necessary to program the alarm chain regarding digital input 1.

First of all, drag the alarm event or the DIN1 ALM function block onto the project:

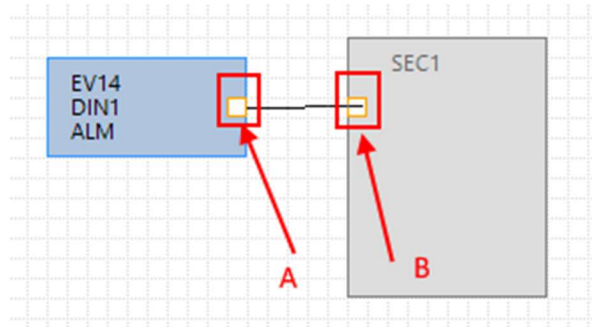


Drag the function block of Simple Event Control logic:



And then connect the event to the logic this way:

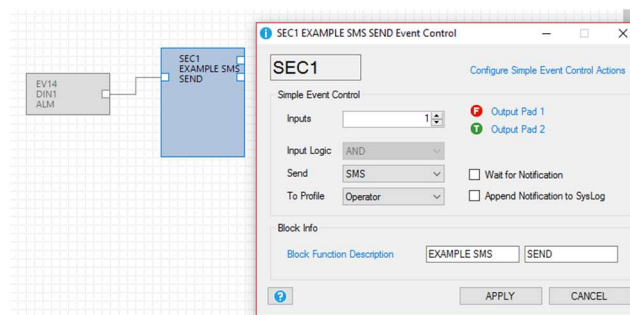
Left-click on A, keep pressing the key and release it on point B:



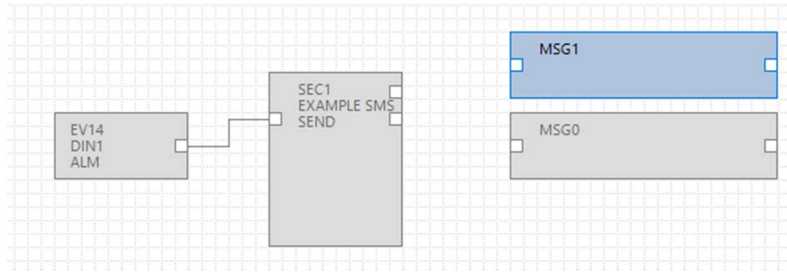
Now double click on the function block of the "SEC1" logic:

Set the "SMS" to "Send" to the Operator profile.

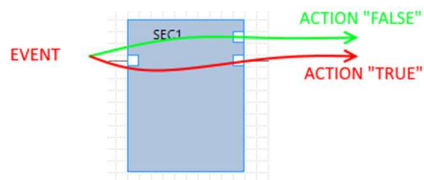
Since the user is the Administrator, it is present in all profiles and so it will receive the SMSs:

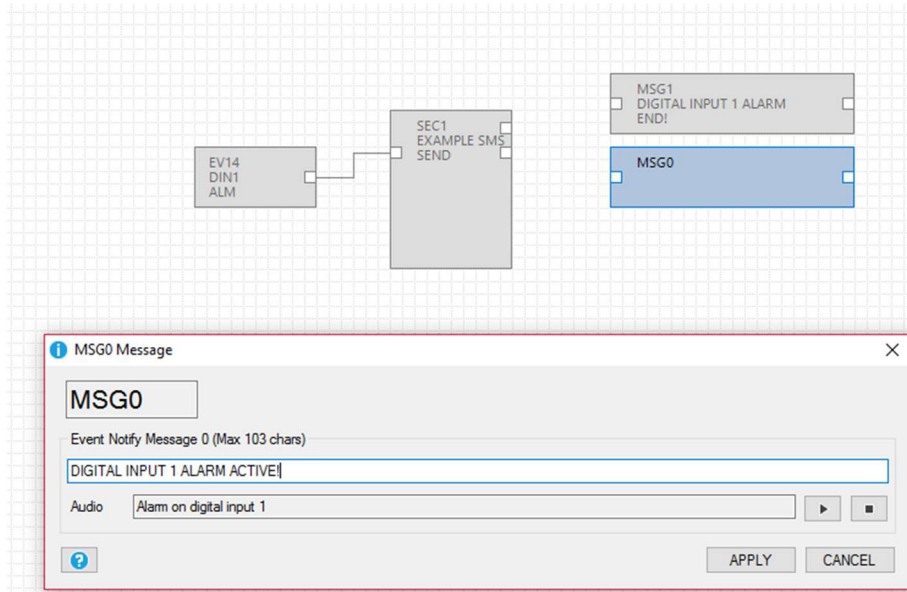


Now add the actions that are, in this case, text messages and add the first two Messages: MSG0 and MSG1:

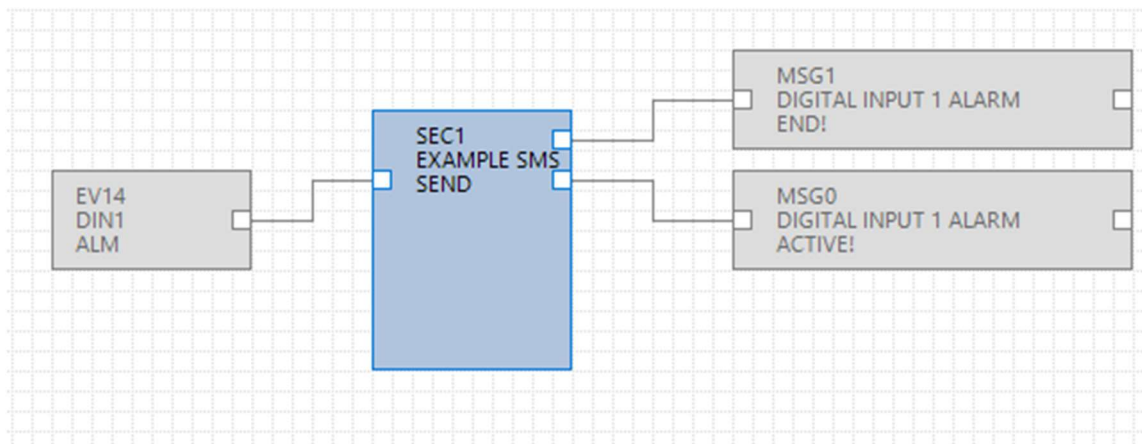


Double click on function blocks MSG0 and MSG1 to modify the default text with your message. Pay attention that SEC1 has false event in pad 1 and true event in pad 2:



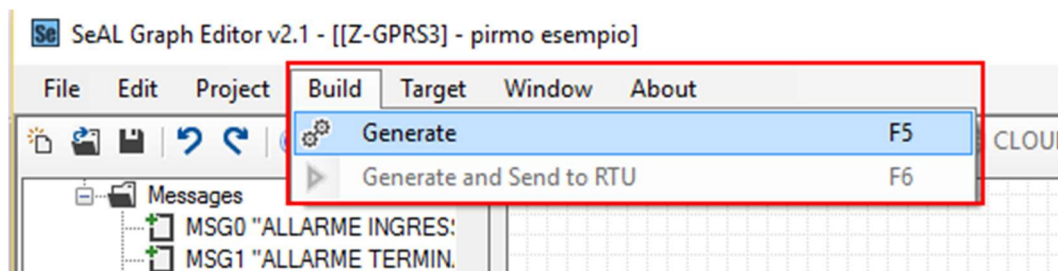


The final chain is obtained connecting the function block of the logic to the two messages:



Both the configuration and the project are complete so now it is necessary to fill in and send the project to the RTU.

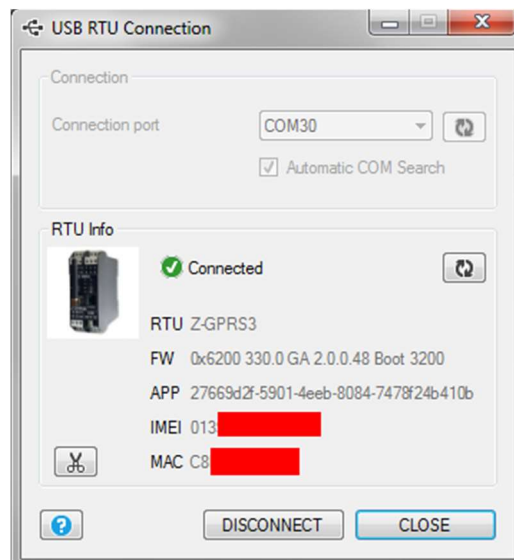
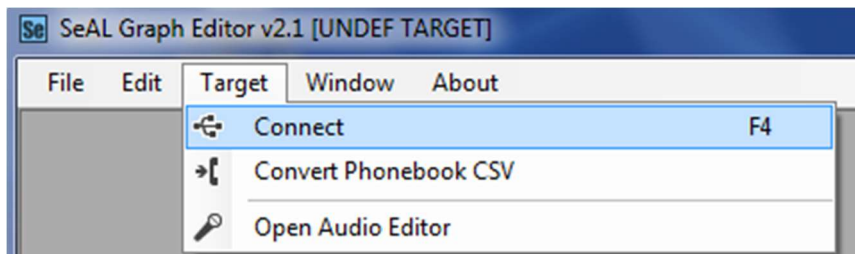
Using the Build menu, fill in checking there are no mistakes:



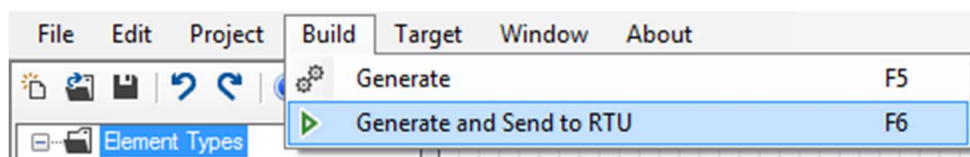
#	Level	Facility	Message
226	Debug	Element	SEC1 cfg.ev.ctrl.0.op.3.msk = 0x00000000
227	Debug	Element	SEC1 cfg.ev.ctrl.0.op.3.equ = 0x00
228	Debug	Element	SEC1 cfg.ev.ctrl.0.op.4.flags = 0x00
229	Debug	Element	SEC1 cfg.ev.ctrl.0.op.4.msk = 0x00000000
230	Debug	Element	SEC1 cfg.ev.ctrl.0.op.4.equ = 0x00
231	Debug	Element	SEC1 cfg.ev.ctrl.0.op.5.flags = 0x00
232	Debug	Element	SEC1 cfg.ev.ctrl.0.op.5.msk = 0x00000000
233	Debug	Element	SEC1 cfg.ev.ctrl.0.op.5.equ = 0x00
234	Info	Build	Time elapsed 0:0:0.128

No mistakes have been highlighted.

Now you can send the project to the RTU connecting the USB cable and then pressing "Connect":



Now send the project with Build -> "Generate and Send to RTU":



At this point, just short circuit terminal 15 and 13 to send the alarm SMS:

"DIGITAL INPUT 1 ALARM ACTIVE!"

to the configured number.

If the short circuit on terminals 15 and 13 is removed, another alarm SMS is generated:

"DIGITAL INPUT 1 ALARM END!"

3. WEB SERVER AND MODBUS TCP-IP SERVER SERVICES

RTUs have two servers, the web server and the modbus TCP-IP server:


- WEB SERVER: allows to view the values of the logger variables in real time, simply using a web browser for PC, smart phone or tablets. It is possible to see the status of the RTU, view any errors, download the log files on the SD card, etc.
- MODBUS TCP-IP SERVER: allows to access in real time the values of the variables that are logged via SCADA or Modbus TCP-IP client.

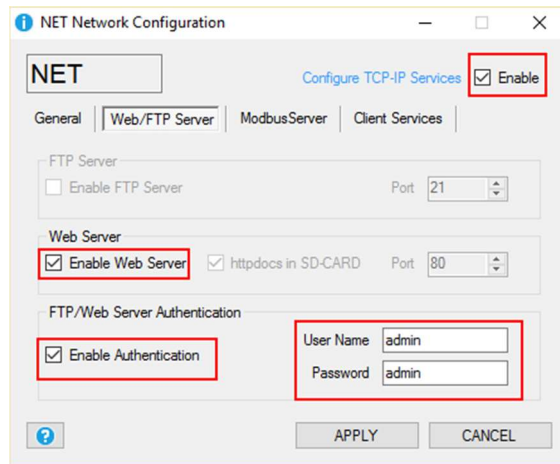
For the Modbus TCP-IP addresses of the RTU internal variables, refer to the user manual.

The Modbus TCP-IP addresses of the RTU extended variables are calculated when filling in, refer to the filling in output:

#	Level	Facility	Message
251	Debug	Element	APP cfg.app.status_notify_flags.1 = 0x00000000
252	Debug	Element	APP cfg.app.status_notify_flags.2 = 0x00000000
253	Debug	Element	APP cfg.app.status_notify_flags.3 = 0x00000000
254	Debug	Element	APP cfg.app.debug_enable = 0x00000000
255	Debug	Element	PRT2 1:INVERTER_A 31793:Current String1 var.w.0 = 0x0000
256	Debug	Element	PRT2 1:INVERTER_A 31793:Current String1 var.w.1 = 0x0000
257	Debug	Element	PRT2 1:INVERTER_A 31795:Current String2 var.w.2 = 0x0000
258	Debug	Element	PRT2 1:INVERTER_A 31795:Current String2 var.w.3 = 0x0000
259	Debug	Element	PRT2 1:INVERTER_A 31797:Current String3 var.w.4 = 0x0000
260	Debug	Element	PRT2 1:INVERTER_A 31797:Current String3 var.w.5 = 0x0000
261	Notice	Build	Slave Address Current String1:PRT2 1:INVERTER_A 31793:Current String1 Mapped to 41003
262	Notice	Build	Slave Address Current String2:PRT2 1:INVERTER_A 31795:Current String2 Mapped to 41005
263	Notice	Build	Slave Address Current String3:PRT2 1:INVERTER_A 31797:Current String3 Mapped to 41007
264	Info	Build	Time elapsed 0:0:0.114

3.1. ENABLING THE WEB SERVER AND THE TCP-IP SERVER

To enable the web server and the modbus TCP-IP server, click on icon  and set the parameters to access the web server:



To access the factory web server using a browser, enter:

<http://IP/maintenance/index.html>

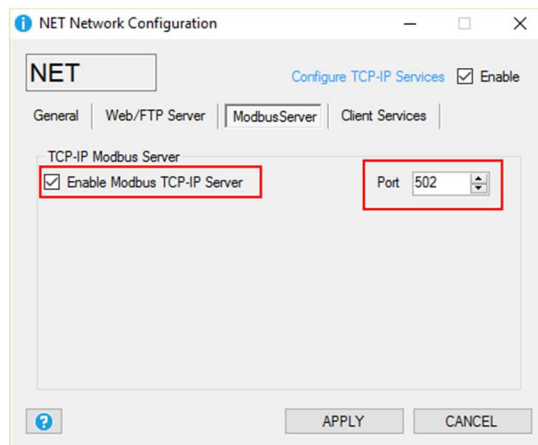
where IP is the current IP address of the RTU (default 192.168.90.101).

To access the web server customised in the SD card using a browser, enter:

<http://IP/index.html>

where IP is the current IP address of the RTU (default 192.168.90.101).

To enable the modbus TCP-IP server:



The Modbus TCP-IP protocol uses port 502 by default, refer to your SCADA to set the correct port number.

3.2. REMOTE ACCESS TO THE WEB SERVER AND MODBUS TCP-IP SERVER

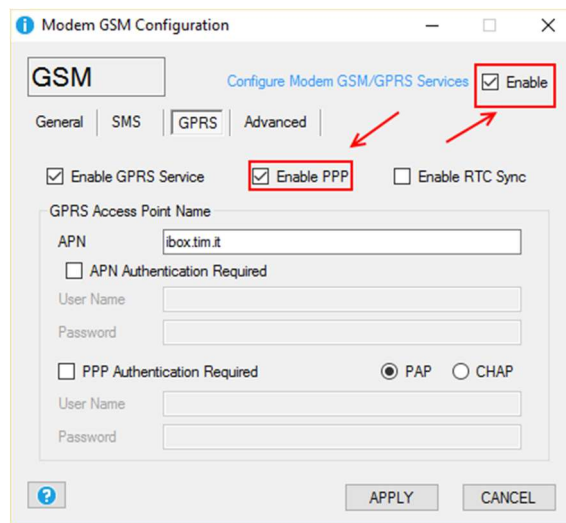
It is possible to access the modbus TCP-IP server and Web server remotely as follows:

- CONNECTION VIA ADSL /Xdsl

For this type of connection, the Ethernet connection is used and the ADSL / xDSL modem must be configured so that the server ports can be seen by the internet (port forwarding or virtual server according to the modem model)

- CONNECTION VIA A GSM/GPRS MODEM

A GSM/GPRS PPP connection is used for this type:



No emails can therefore be sent via an SMTP EMAIL server since they require an SSL connection.

As to the remote connection, there are various types of SIM:

3.2.1. CLASSIC SIM WITH DATA TRAFFIC

This SIM is the most common and is normally used in smart phones. Typically, this SIM cannot be reached directly because all incoming ports are filtered.. With this type of SIM you can only send log files and alarms and can access neither the modbus TCP-IP server nor the WEB server.

If you need to connect to the RTU you must contact your service provider to have the SIM with "incoming ports opened"

3.2.2. CLASSICAL SIM WITH DATA SERVICE AND INCOMING PORTS OPEN

This SIM is a classical SIM enabled for data service whose incoming ports have been opened by the service provider. With this type of SIM you can access the modbus TCP-IP server as well as the Web server but the IP address changes every time you connect (dynamic ip).

To solve the problem, the RTU can answer the SMS (whose text is "NET") by sending the current IP address. The Seneca OPC Server can also be used to connect to the Modbus TCP-IP server automatically, using a FTP server that always keeps the last valid IP address.

3.2.3. SIM WITH PRIVATE APN

This SIM allows accessing a private network (external to the internet) and having a fixed and static IP available. It is therefore possible to set both the web server and the Modbus TCP-IP server directly.